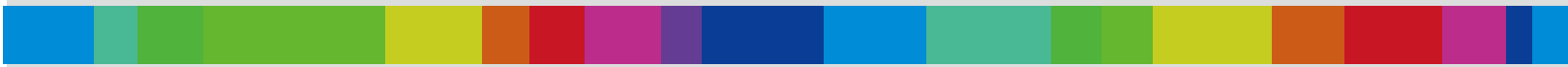
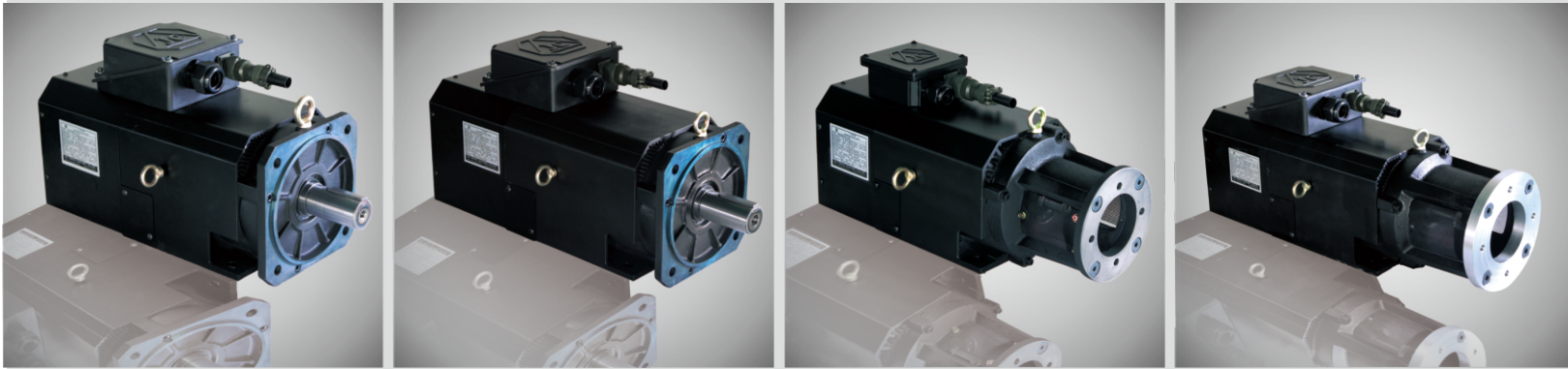




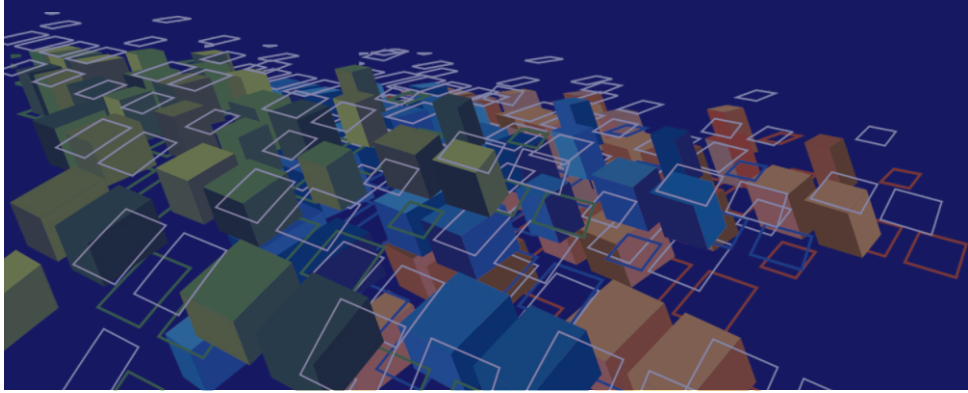
JIA CHENG

ELECTRIC CO., LTD.



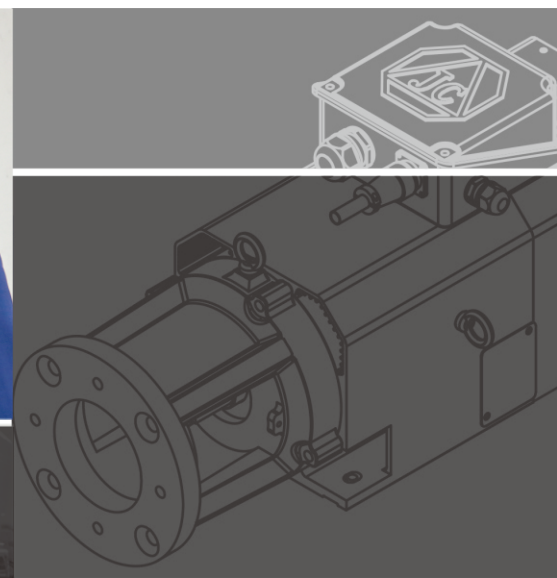
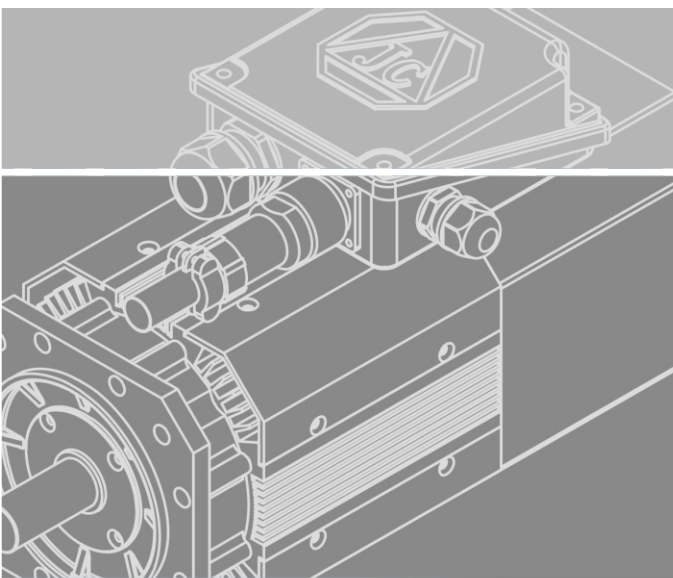
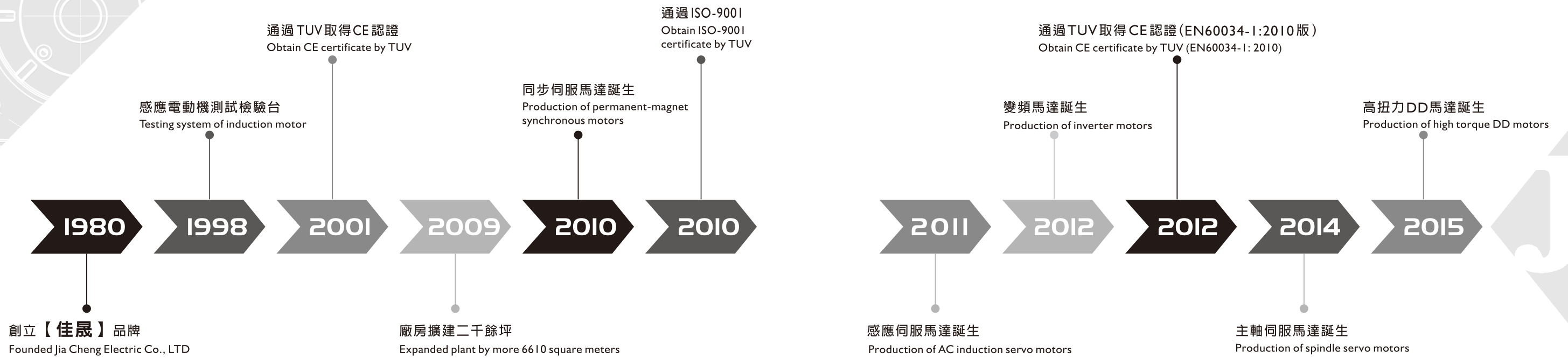
JVM Servo Motor

JSM Spindle Servo Motor



www.jcmotor.com.tw

(第一版)



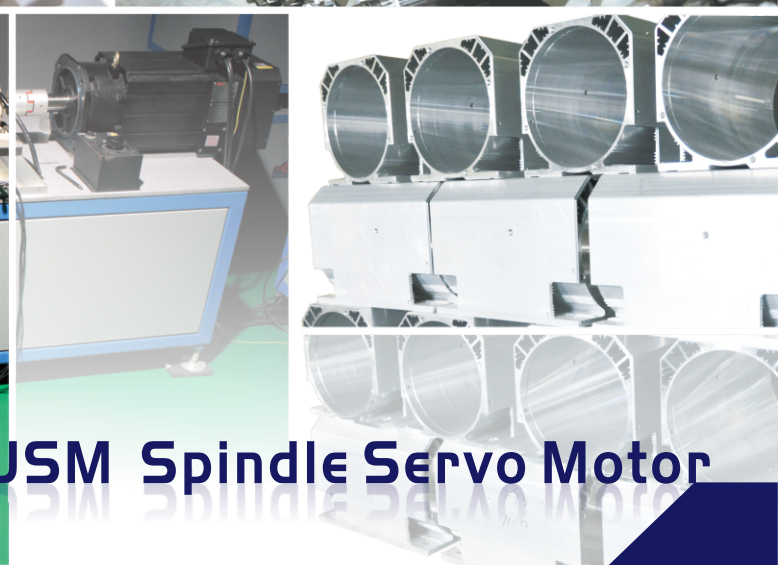
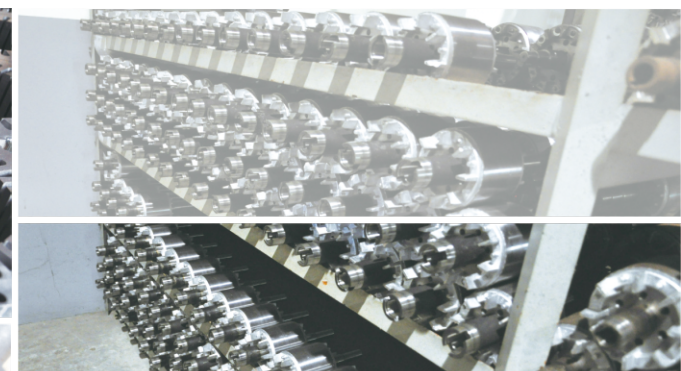
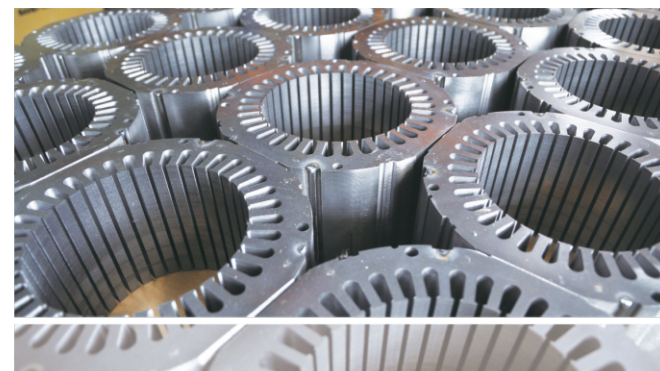
佳晟永遠秉持著顧客至上以及基本的四大原則：

「品質、服務、效率、創新」的態度，為客戶提供多樣化的產品與服務。因此，在累積多年油壓馬達設計與製造的經驗後，持續朝向高效率與省能源的研發目標邁進，為客戶提供全系列完整的油壓馬達產品。有了紮實的技術團隊讓佳晟在商場上獲得良好的口碑，再次證明佳晟的實力與客戶的信賴。

佳晟為了因應廣大客戶需求，於2009年1月擴建廠房二千餘坪，並以ISO-9001品質管理系統作為管理工具核心，有效整合管理、財務、營業、研發、製造和品管各部門，部門間相互協調與配合，成為頂尖的服務團隊。此外於2010年起佳晟著手開發JPM同步伺服馬達、JVM感應伺服馬達、JSM主軸伺服馬達、DDM高扭力DD馬達及IE3感應馬達，正式朝向綠能產業的旅程，邁向另一個新紀元。

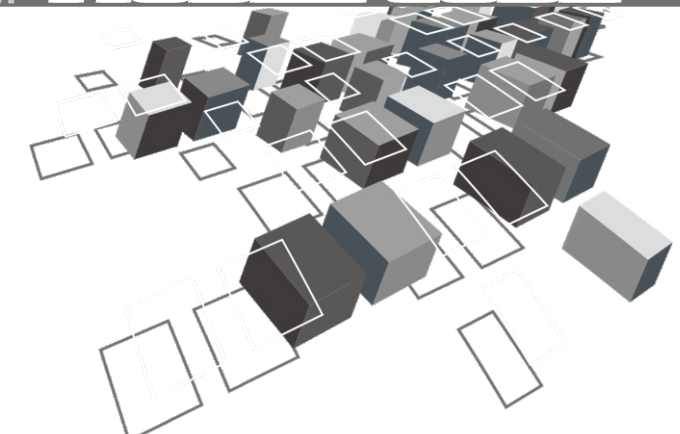
We maintain that customer first and have abided by its founding values of "QUALITY, SERVICE, EFFICIENCY, and INNOVATION". We can provide customers with a variety of products and services. Accumulated years of experience in the design and manufacture of the hydraulic motor, we still continue to develop high efficiency and energy saving products for greener. We not only offer a range of hydraulic motors but also make it personalization and customization. Thus ensuring that Jia Cheng will be prove quality and customers reliable.

Base on the customers satisfaction and development project, Jia Cheng has received ISO 9001 quality system certification. This system serves as a tool for management, financial, business, research and development, manufacturing and product quality. In addition to improve the management constantly and innovate design continuously, it helps coordination and cooperation between every department. On the other hand, this system gain trust and competitive edge on the market, and enable the company to reach their goals in sustained development. Jia Cheng expanded plant by more 6610 square meters in January 2009. And Jia Cheng developed synchronous servo motors (JPM), induction servo motors (JVM), spindle servo motors (JSM), high torque DD motors(DDM) and IE3 induction motors(ACH). We will toward environmental protection and energy conservation for new journey.



JVM Servo Motor

JSM Spindle Servo Motor



Power Output

1	2	3	4	5	6	7	8	9	10	11	12	13	14	15	16	17	18
J	V	M	-	1	3	2	-	0	1	-	1	5	-	2	2	-	L

Specification

20	21	22	23	24	25	26	27	28
H	H	A	0	2	-	U	-	EIPC3

1~3 Standard

JPM	Permanent Magnet Servo Motor
JVM	Servo Motor
JSM	Spindle Servo Motor
JIM	Inverter motor

15~16 Voltage

22	220 V
38	380 V
57	575 V

22 Body Material

A	Aluminum Body
S	Cast Iron Body
F	Iron Body

5~7 Frame No.

071	IEC 71
090	IEC 90
100	IEC 100
132	IEC 132

18 Feedback Sensor

L	Line Driver
P	Pushpull
R	Resolver
S	SSI

23~24 Classification

01	General Type
02	Long Coupling Type
03	...

9~10 Classification

01	01
02	02
03	03
...	...
07	07

20 Type

H	Horizontal
B	Standard

26 Terminal Box Position

R	General
U	Upside
L	Opposite

12~13 Rated Speed

10	1000 RPM
15	1500 RPM
20	2000 RPM
30	3000 RPM

21 Frame No.

H	Horizontal
V	Vertical

28 Specification

P16	P08、P16、P22
P36	P36、P46
EIPC3	EIPC3
EIPC5	EIPC5
...	...

3 - PHASE Servo motor IP54		
TYPE : JVM-132-01-20-38-L		
Rated Power : 15 KW	Rated Torque : 71.3 N-m	
Rated Speed : 2000 rpm	Rated Frequency : 69 Hz	
Rated Voltage Δ : 220 V	Rated Voltage Y : 380 V	
Rated Current Δ : 53.6 A	Rated Current Y : 31 A	
Max Speed : 4000 rpm	Max Frequency : 138.1 Hz	
INS.Class : F	Date : 2016.01	
DE brg : 6309	NDE brg : 6308	Weight : 90 kg
Encoder Pushpull : 1024 PPR	24V	Vdc
Fan : 1 Phase 220 V 0.65/0.92 A 50/60 Hz		
SER.NO. : HHA02-U-EIPC3-001		
JIA CHENG ELECTRIC CO.,LTD.		
Http://www.jcmotor.com.tw MADE IN TAIWAN		



公司簡介 Introduction

經營理念 Corporate Value

編碼原則 Model Code

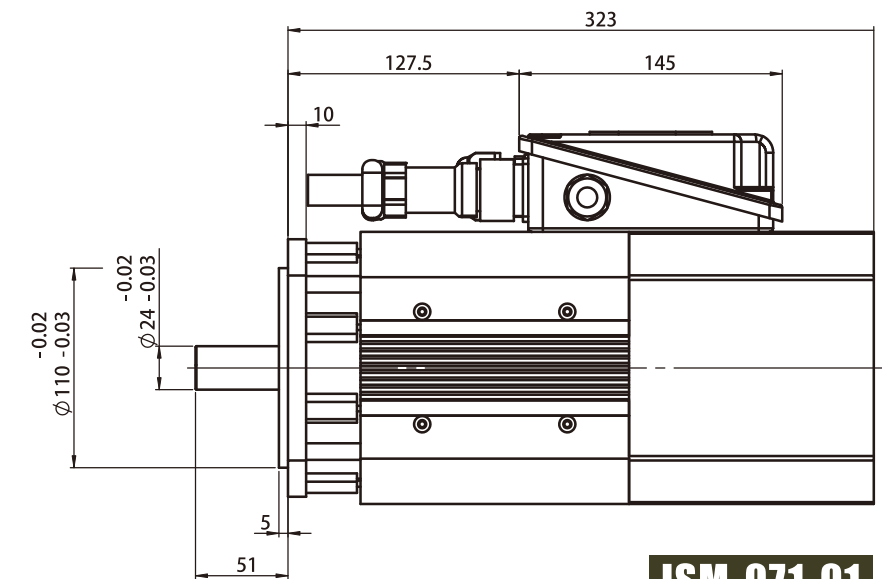
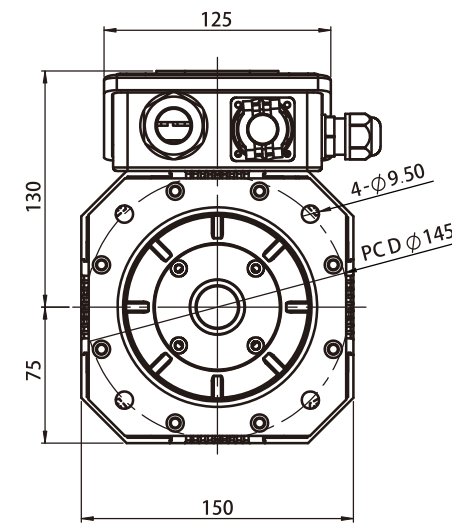
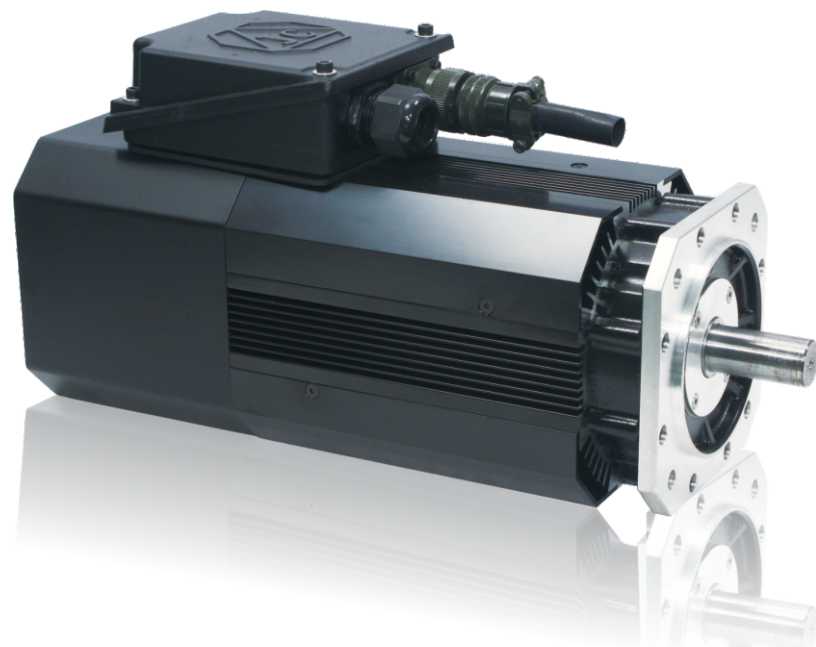
目錄 Contents

七大產品

JSM-071-01 (Rated Torque 5.1~10.4 N-m)	01-02
JVM-090-01 / JSM-090-01 (Rated Torque 3.5~7.2 N-m)	03-04
JVM-090-02 / JSM-090-02 (Rated Torque 7.2~10.5 N-m)	05-06
JVM-090-03 / JSM-090-03 (Rated Torque 14.3~17.7 N-m)	07-08
JVM-090-04 / JSM-090-04 (Rated Torque 21~26.3 N-m)	09-10
JVM-100-01 / JSM-100-01 (Rated Torque 21~26.3 N-m)	11-12
JVM-100-02 / JSM-100-02 (Rated Torque 35.3~35.8 N-m)	13-14
JVM-100-03 / JSM-100-03 (Rated Torque 52.5~52.5 N-m)	15-16
JVM-100-04 / JSM-100-04 (Rated Torque 71.6~71.6 N-m)	17-18
JVM-132-01 / JSM-132-01 (Rated Torque 71.6~71.6 N-m)	19-20
JVM-132-02 / JSM-132-02 (Rated Torque 87.6~86.3 N-m)	21-22
JVM-132-03 / JSM-132-03 (Rated Torque 105~143.2 N-m)	23-24
JVM-132-04 / JSM-132-04 (Rated Torque 140.1~176.7 N-m)	25-26
JVM-132-05 / JSM-132-05 (Rated Torque 176.7~210 N-m)	27-28

接線方式



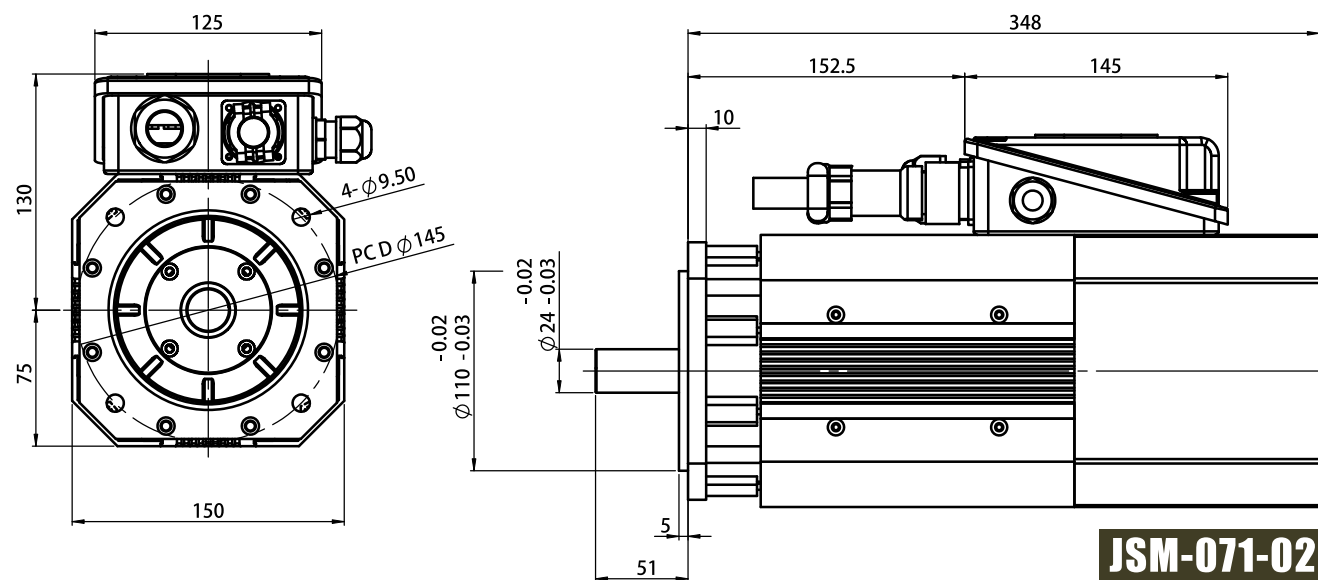


JSM-071-01

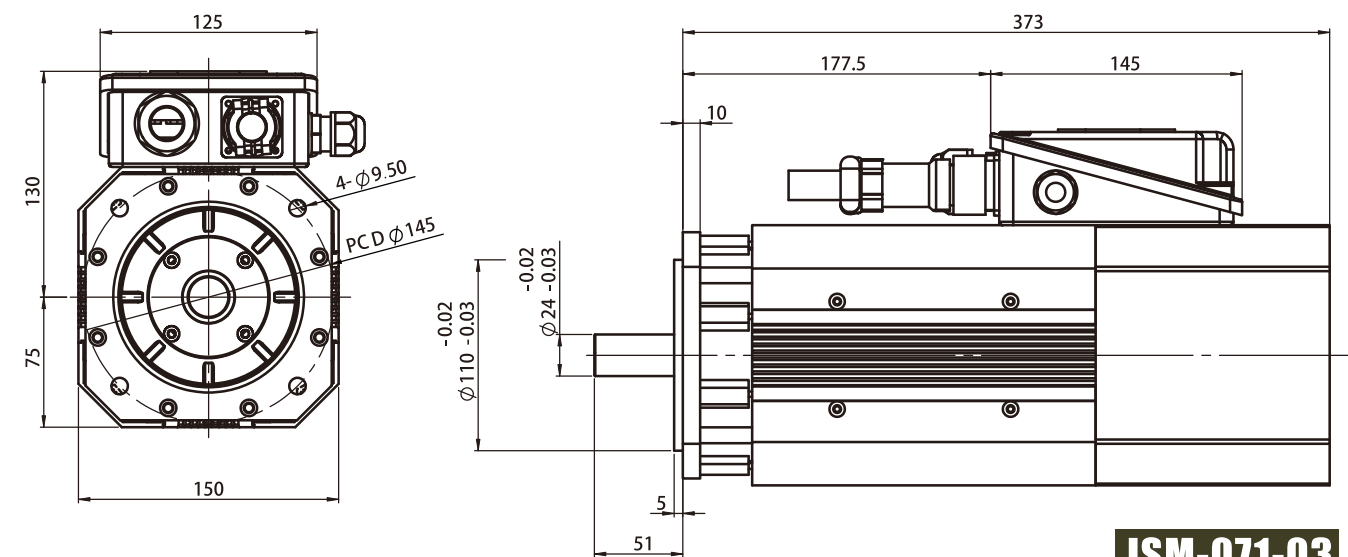
Standard

Motor Type	Rated Power (kw)	Rated Speed (rpm)	Rated Torque (Nm)	Rated Voltage (V)	Rated Current (A)
JSM-071-01-70-22	3.7	7000	5.1	220	14.6
JSM-071-01-70-38			5.1	380	8.4
JSM-071-02-70-22	5.5	7000	7.5	220	21.3
JSM-071-02-70-38			7.6	380	12.3
JSM-071-03-70-22	7.5	7000	10.3	220	28.5
JSM-071-03-70-38			10.4	380	16.5

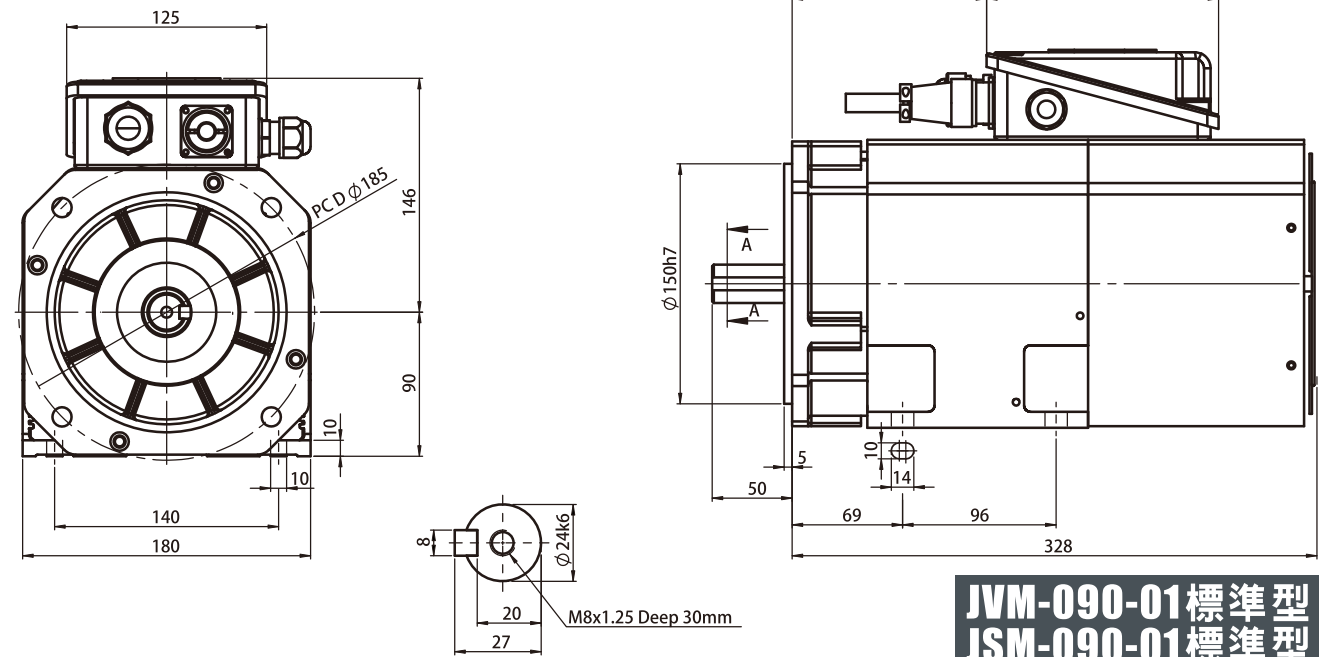
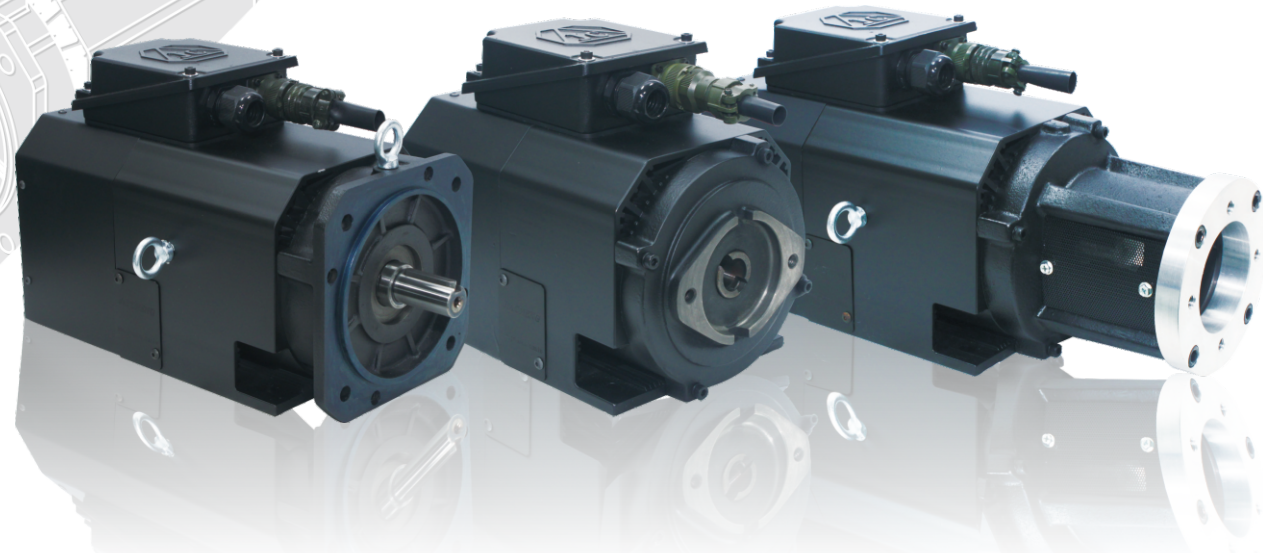
Rated Frequency (Hz)	Poles (P)	Efficiency (%)	Max Speed (rpm)	Inertia (kg-cm ²)	Bearings	Weight (kg)
237.77	4	88.0	24000	26.8	LS:6206	
237.77		88.5			OS:6205	
237.77	4	89.4	24000	34.4	LS:6206	
237.78		89.9			OS:6205	
238.07	4	90.0	24000	42.1	LS:6206	19.5
238.16		90.5			OS:6205	



JSM-071-02



JSM-071-03

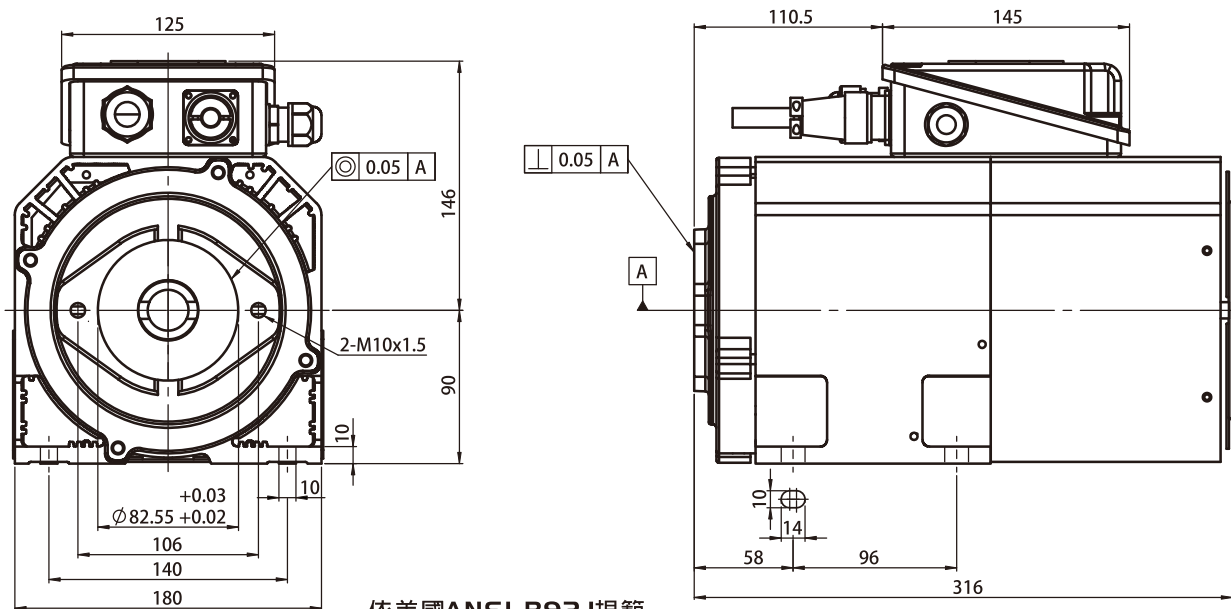


JVM-090-01 標準型
JSM-090-01 標準型

Standard

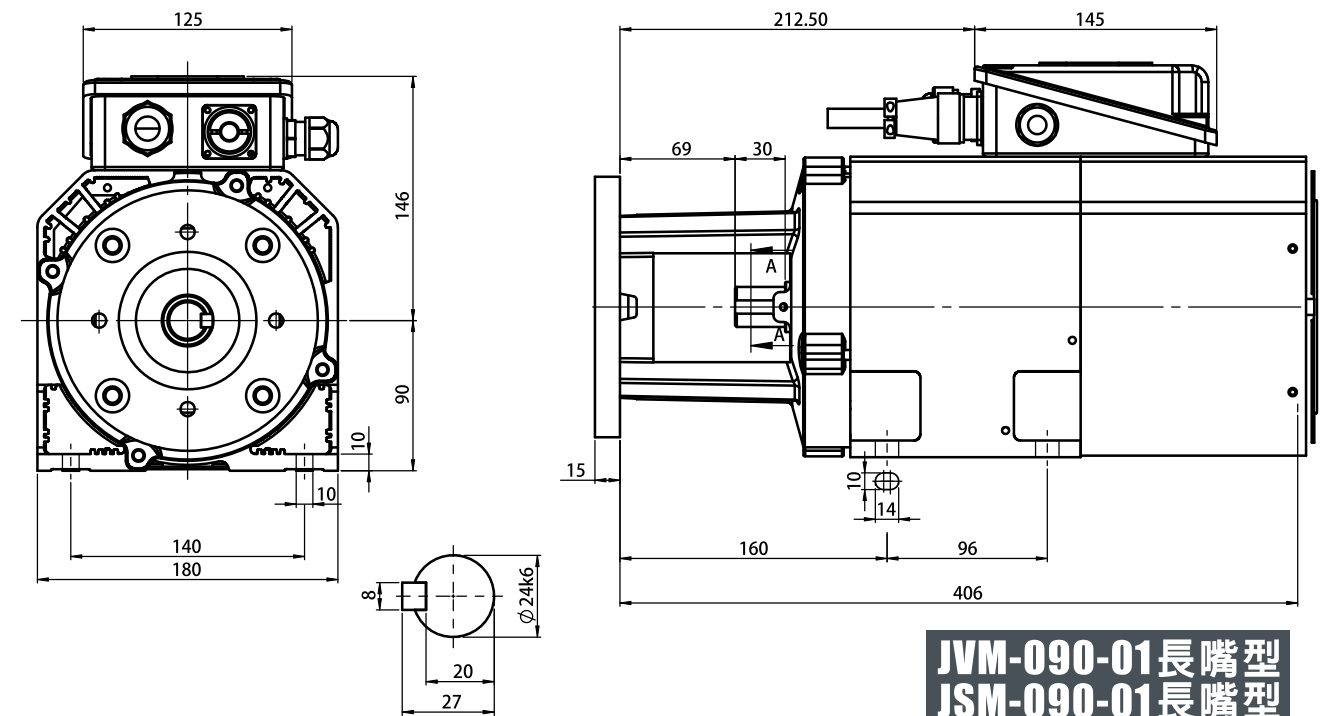
Motor Type	Rated Power (kw)	Rated Speed (rpm)	Rated Torque (Nm)	Rated Voltage (V)	Rated Current (A)
JVM-090-01-10 JSM-090-01-10	0.37	1000	3.5	220 / 380	1.7/1.0
JVM-090-01-15 JSM-090-01-15	0.75	1500	4.7		3.2/1.8
JVM-090-01-20 JSM-090-01-20	1.5	2000	7.2		2.9/3.4

Rated Frequency (Hz)	Poles (P)	Efficiency (%)	Max Speed (rpm)	Inertia (kg-cm ²)	Bearings	Weight (kg)
35.6	4	76.3	8000	46.2	LS:6306 OS:6205	
52.3		75.4				
68.9		75.2				

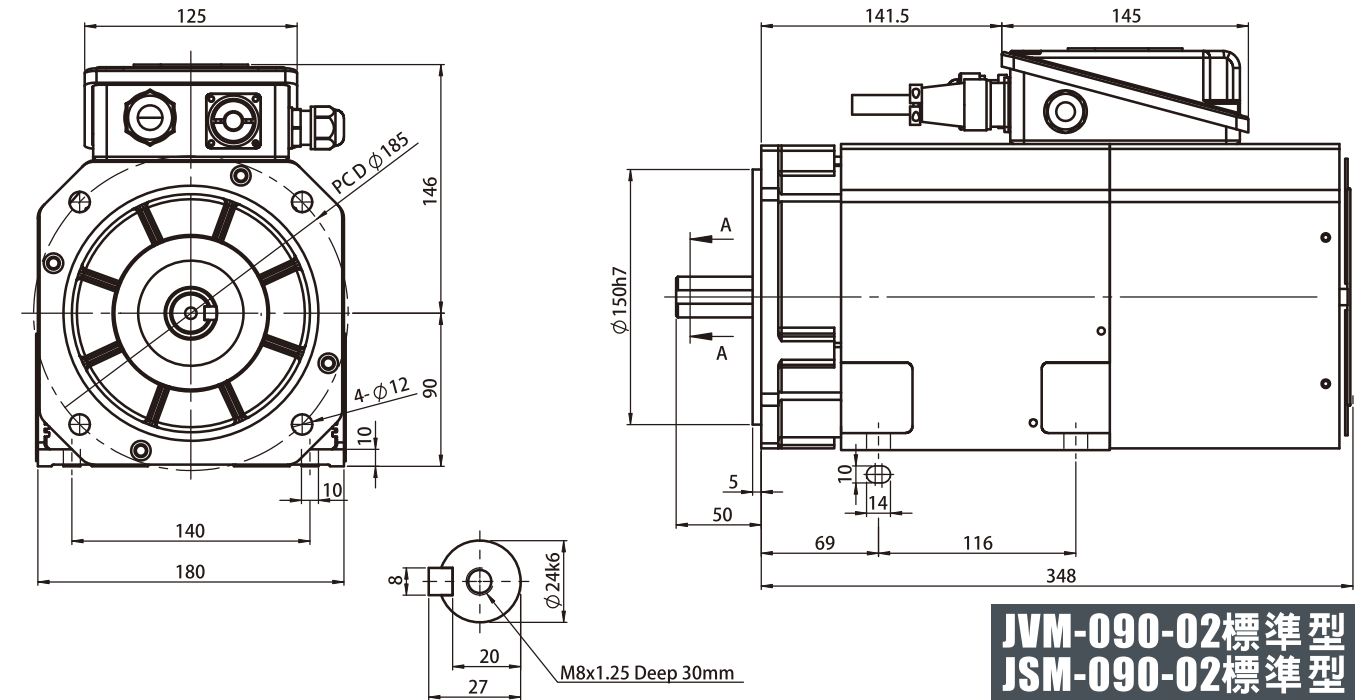
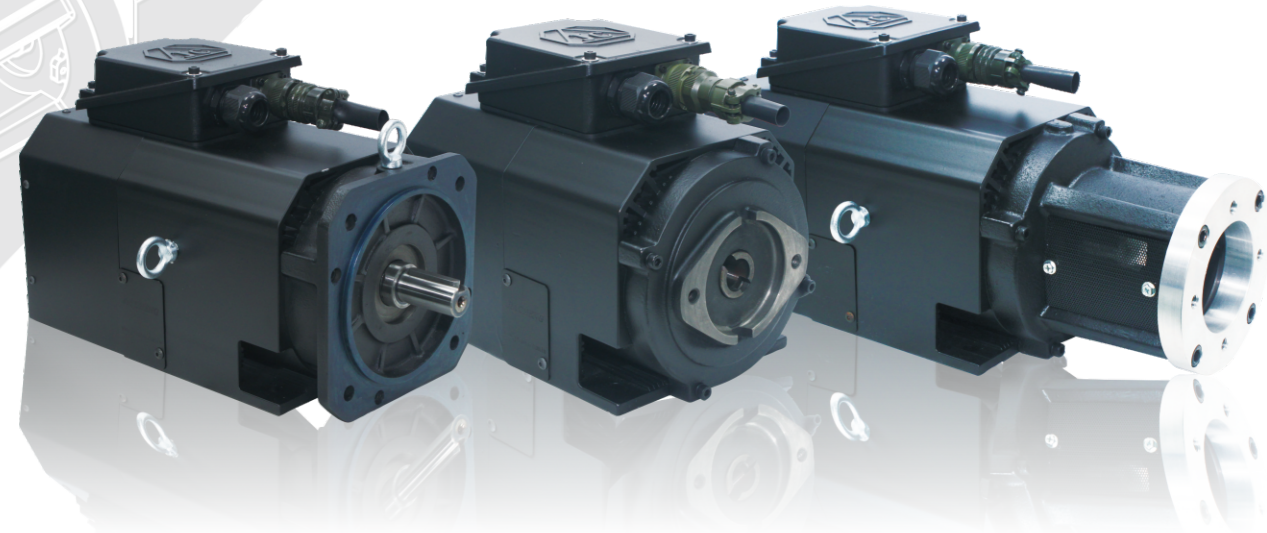


依美國ANSI B92.1規範
模數：D.P.16/32
壓力角：30度
齒數：9齒
節圓直徑：14.2875mm

JVM-090-01 直結型
JSM-090-01 直結型



JVM-090-01 長嘴型
JSM-090-01 長嘴型

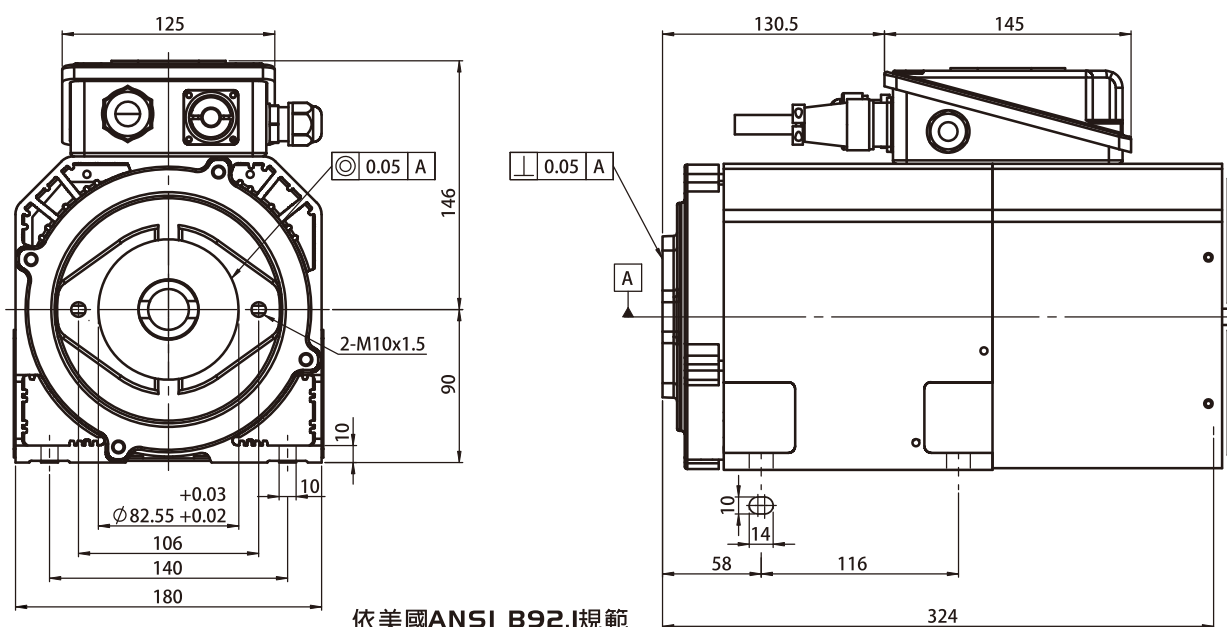


JVM-090-02標準型
JSM-090-02標準型

Standard

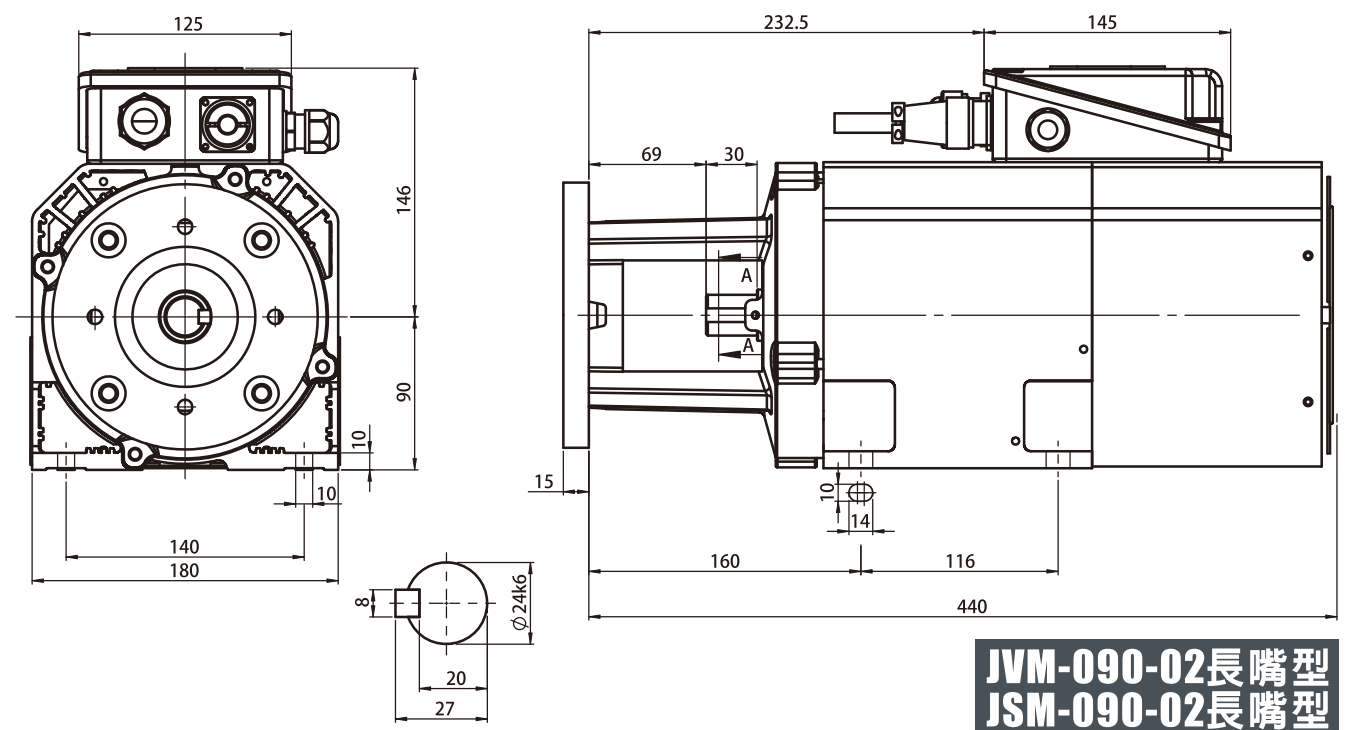
Motor Type	Rated Power (kw)	Rated Speed (rpm)	Rated Torque (Nm)	Rated Voltage (V)	Rated Current (A)
JVM-090-02-10 JSM-090-02-10	0.75	1000	7.2	220 / 380	3.2/1.8
JVM-090-02-15 JSM-090-02-15	1.5	1500	9.6		5.9/3.4
JVM-090-02-20 JSM-090-02-20	2.2	2000	10.5		8.6/4.9

Rated Frequency (Hz)	Poles (P)	Efficiency (%)	Max Speed (rpm)	Inertia (kg-cm ²)	Bearings	Weight (kg)
36.2	4	77.8	8000	58.1	LS:6306 OS:6205	
52.9		76.7				
69.5		75.9				

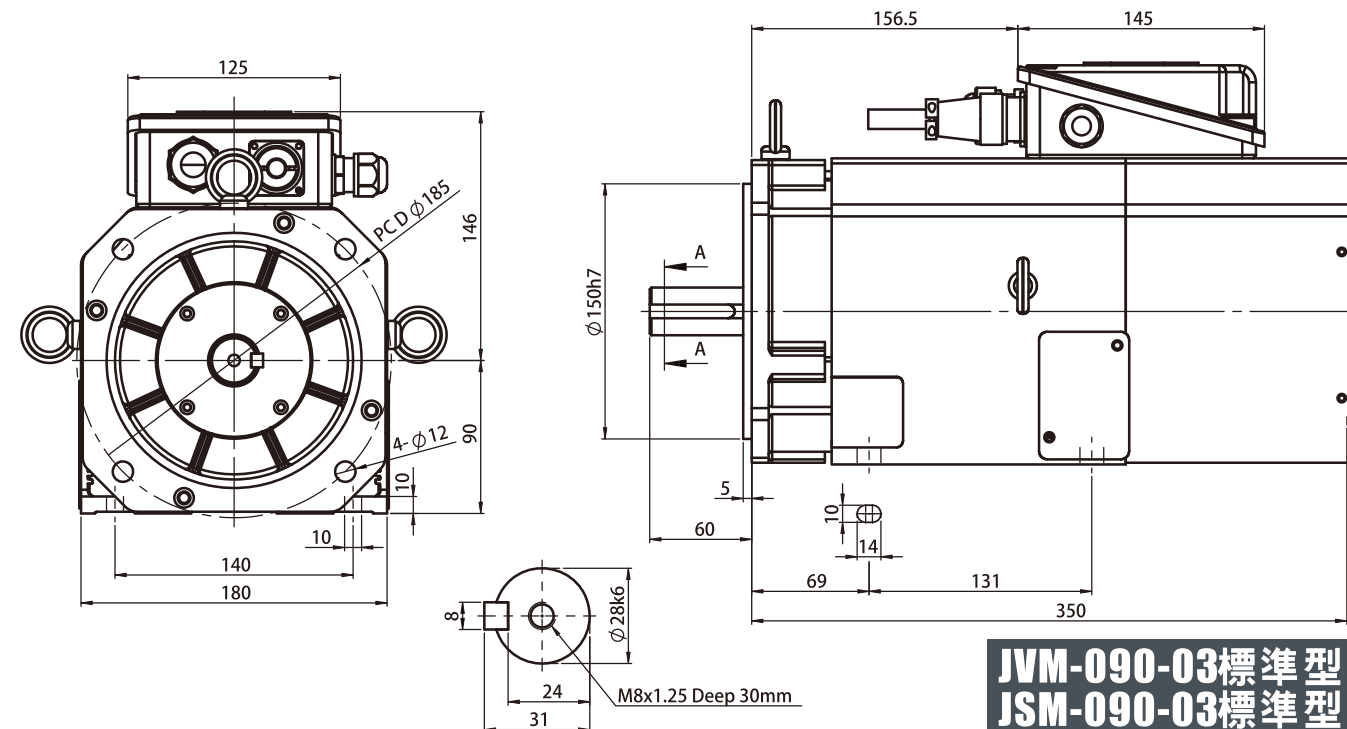
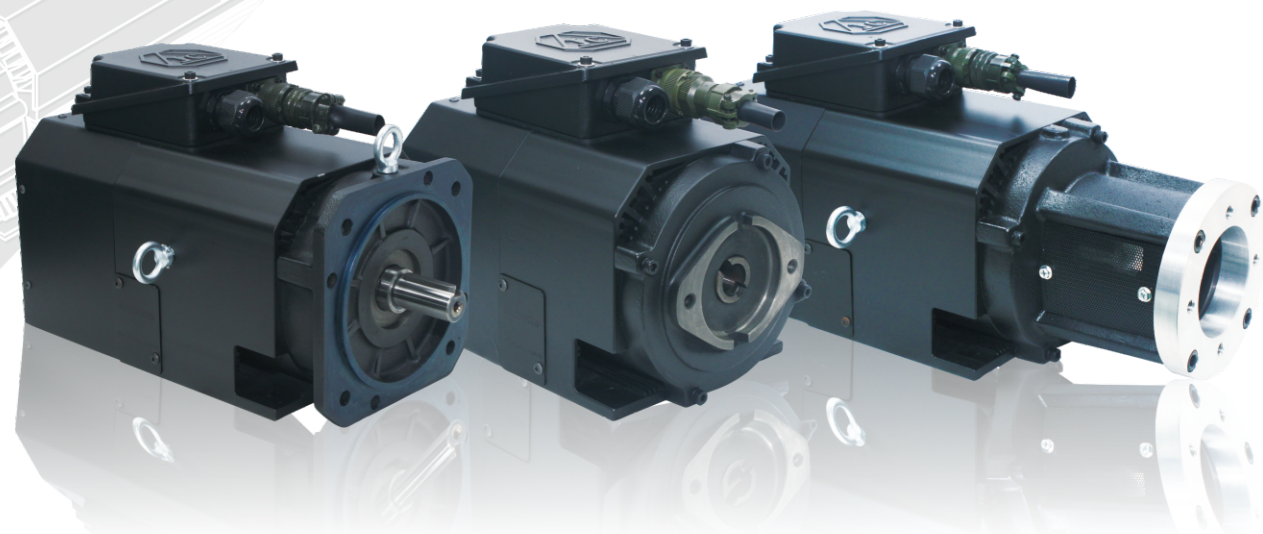


依美國ANSI B92.1規範
模數：D.P.16/32
壓力角：30度
齒數：9齒
節圓直徑：14.2875mm

JVM-090-02直結型
JSM-090-02直結型



JVM-090-02長嘴型
JSM-090-02長嘴型

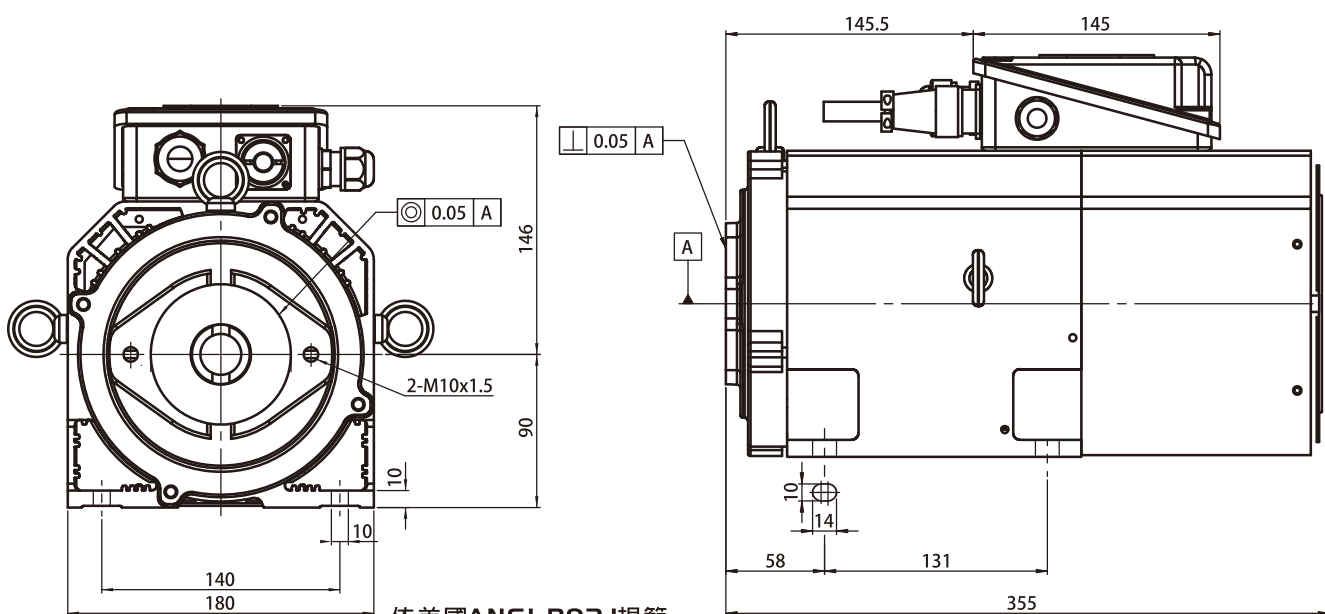


JVM-090-03標準型
JSM-090-03標準型

Standard

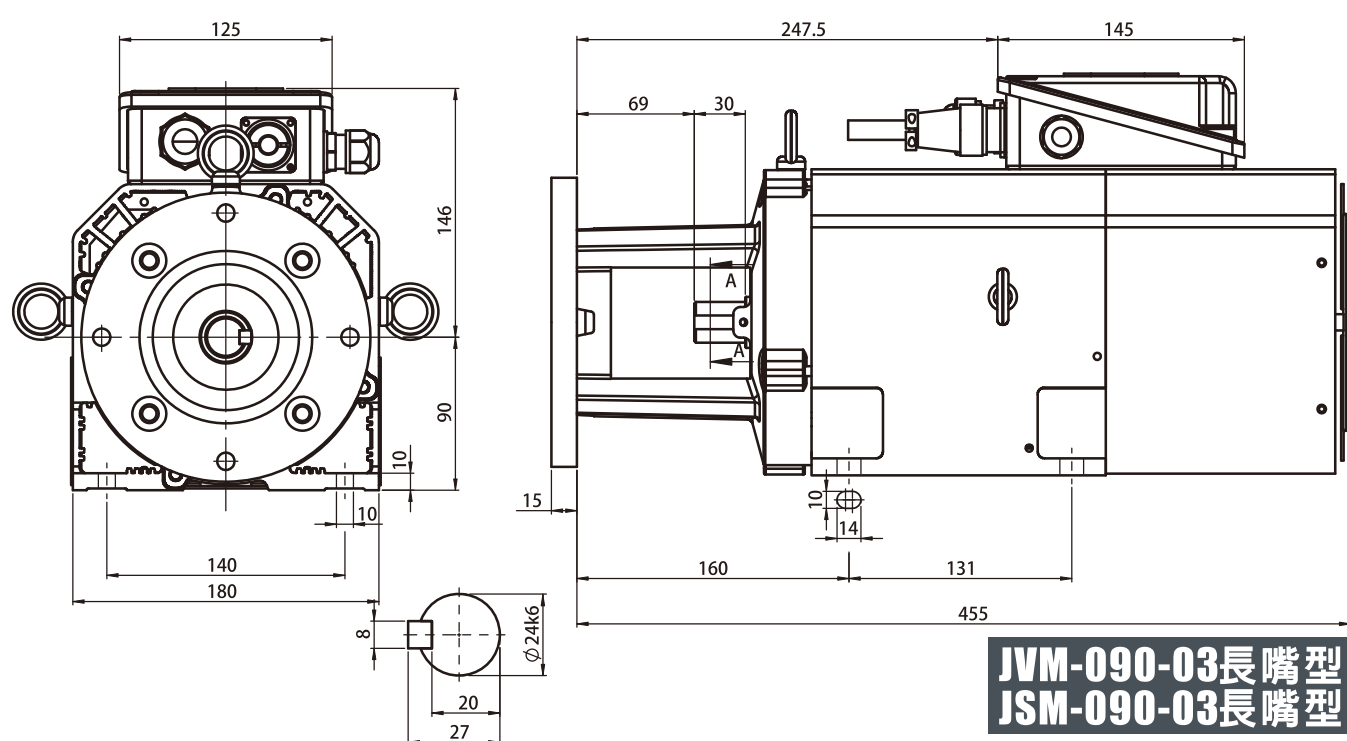
Motor Type	Rated Power (kw)	Rated Speed (rpm)	Rated Torque (Nm)	Rated Voltage (V)	Rated Current (A)
JVM-090-03-10 JSM-090-03-10	1.5	1000	14.3	220 / 380	5.9/3.4
JVM-090-03-15 JSM-090-03-15	2.2	1500	14.0		8.6/4.9
JVM-090-03-20 JSM-090-03-20	3.7	2000	17.7		15.4/8.8

Rated Frequency (Hz)	Poles (P)	Efficiency (%)	Max Speed (rpm)	Inertia (kg-cm ²)	Bearings	Weight (kg)
35.8	4	81.2	8000	70.0	LS:6306 OS:6205	30
52.5		80.7				
69.1		80.2				

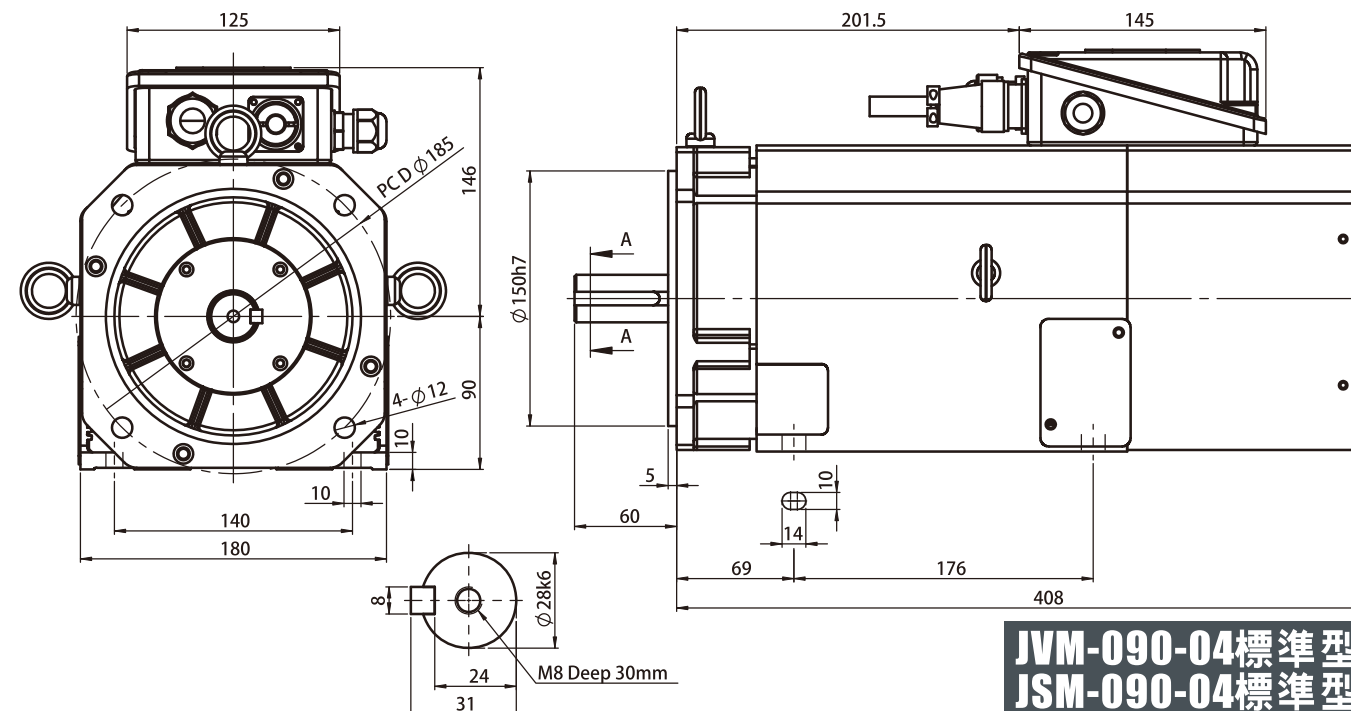
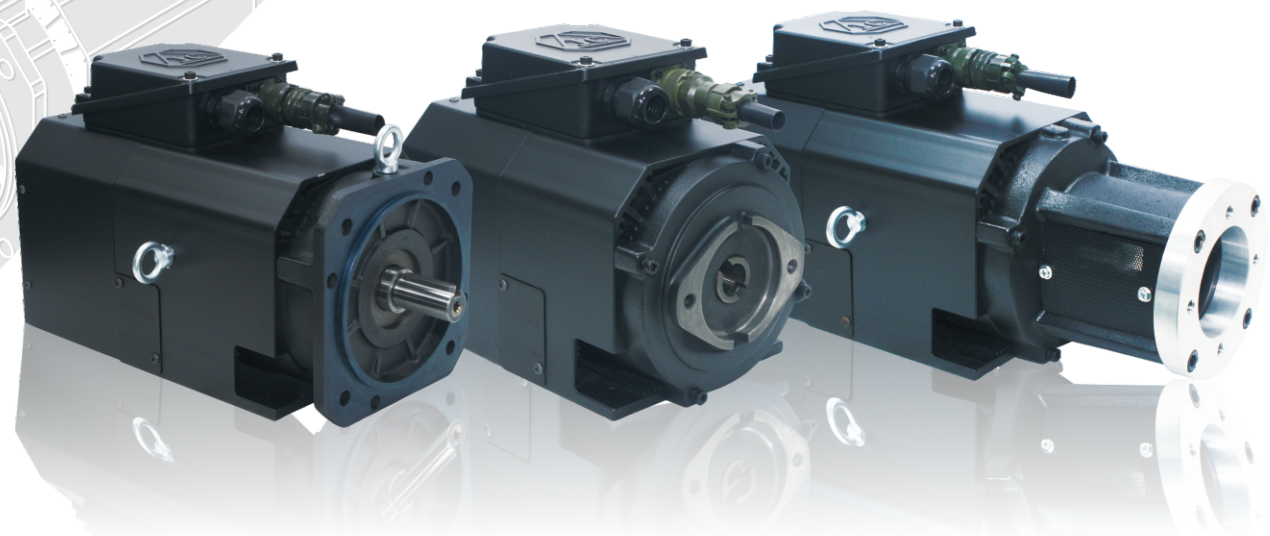


依美國ANSI B92.1規範
模數：D.P.16/32
壓力角：30度
齒數：9齒
節圓直徑：14.2875mm

JVM-090-03直結型
JSM-090-03直結型



JVM-090-03長嘴型
JSM-090-03長嘴型

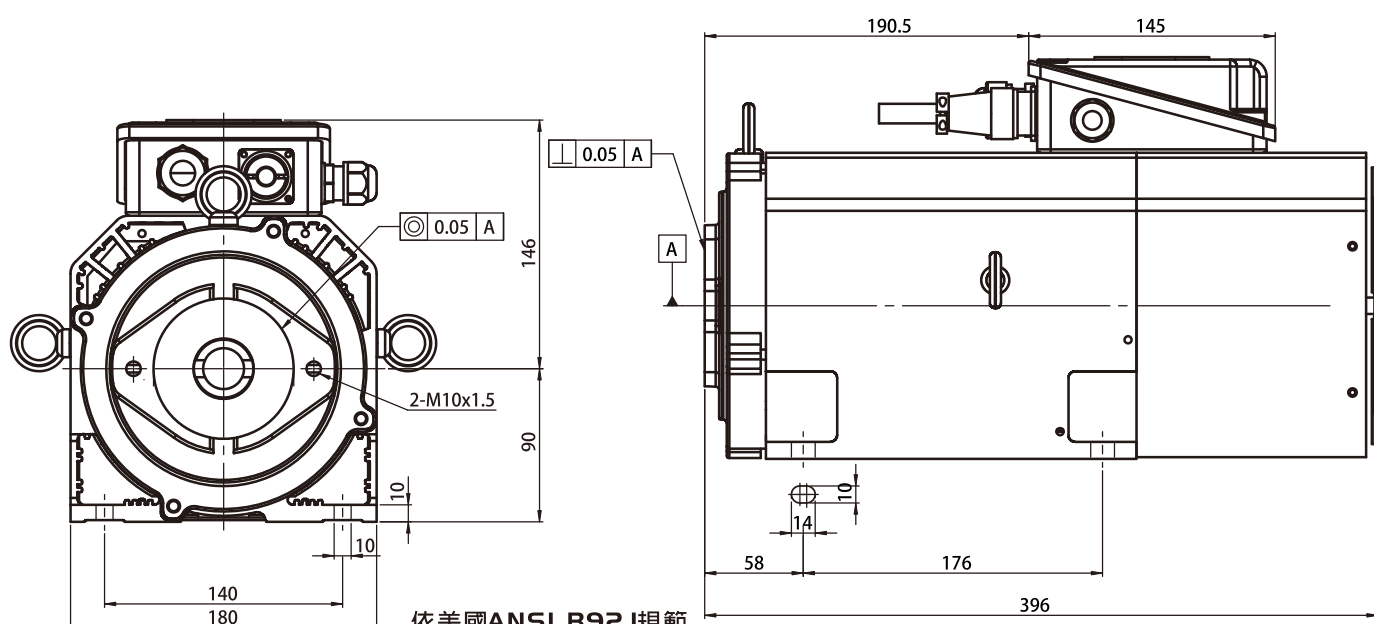


JVM-090-04標準型
JSM-090-04標準型

Standard

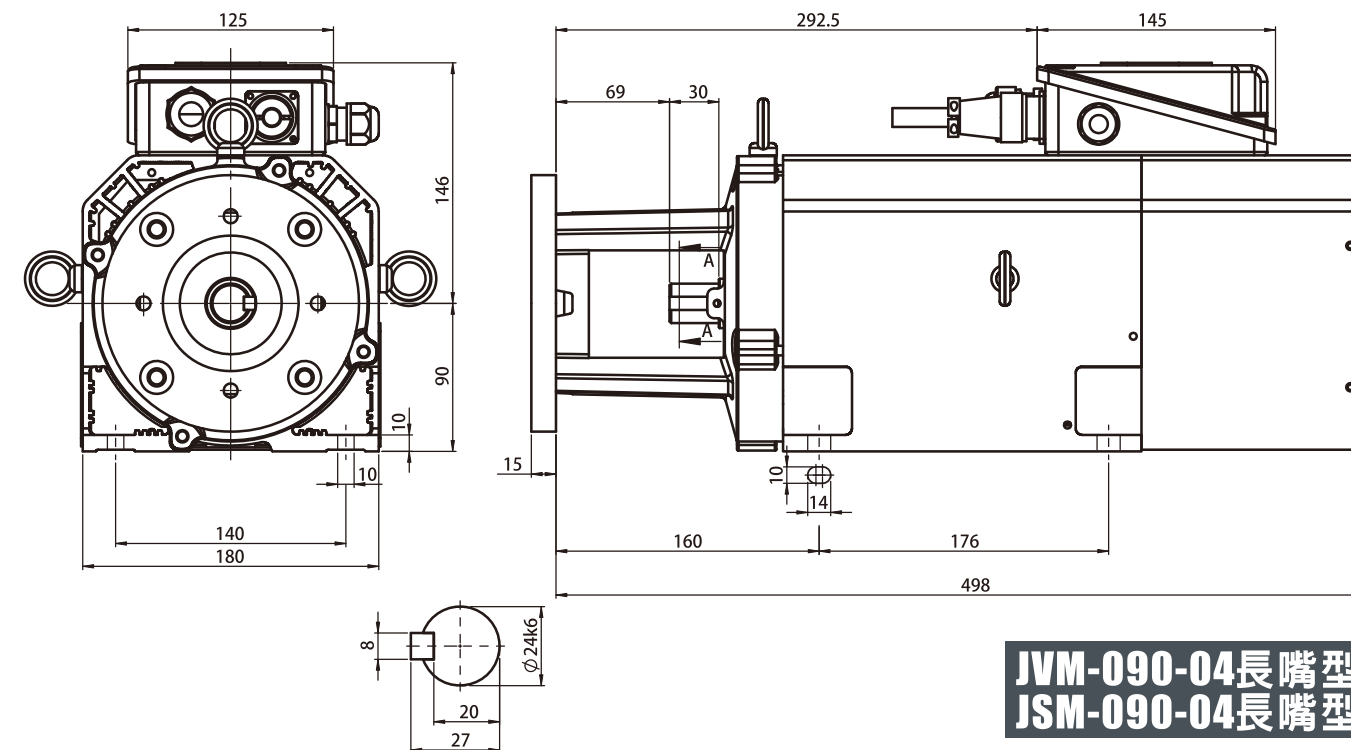
Motor Type	Rated Power (kw)	Rated Speed (rpm)	Rated Torque (Nm)	Rated Voltage (V)	Rated Current (A)
JVM-090-04-10 JSM-090-04-10	2.2	1000	21.0	220 / 380	8.6/4.9
JVM-090-04-15 JSM-090-04-15	3.7	1500	24.8		15.4/8.8
JVM-090-04-20 JSM-090-04-20	5.5	2000	26.3		20.8/12

Rated Frequency (Hz)	Poles (P)	Efficiency (%)	Max Speed (rpm)	Inertia (kg-cm ²)	Bearings	Weight (kg)
35.5	4	84.5	8000	94.3	LS:6306 OS:6205	35
52.2		83.8				
68.8		83.1				

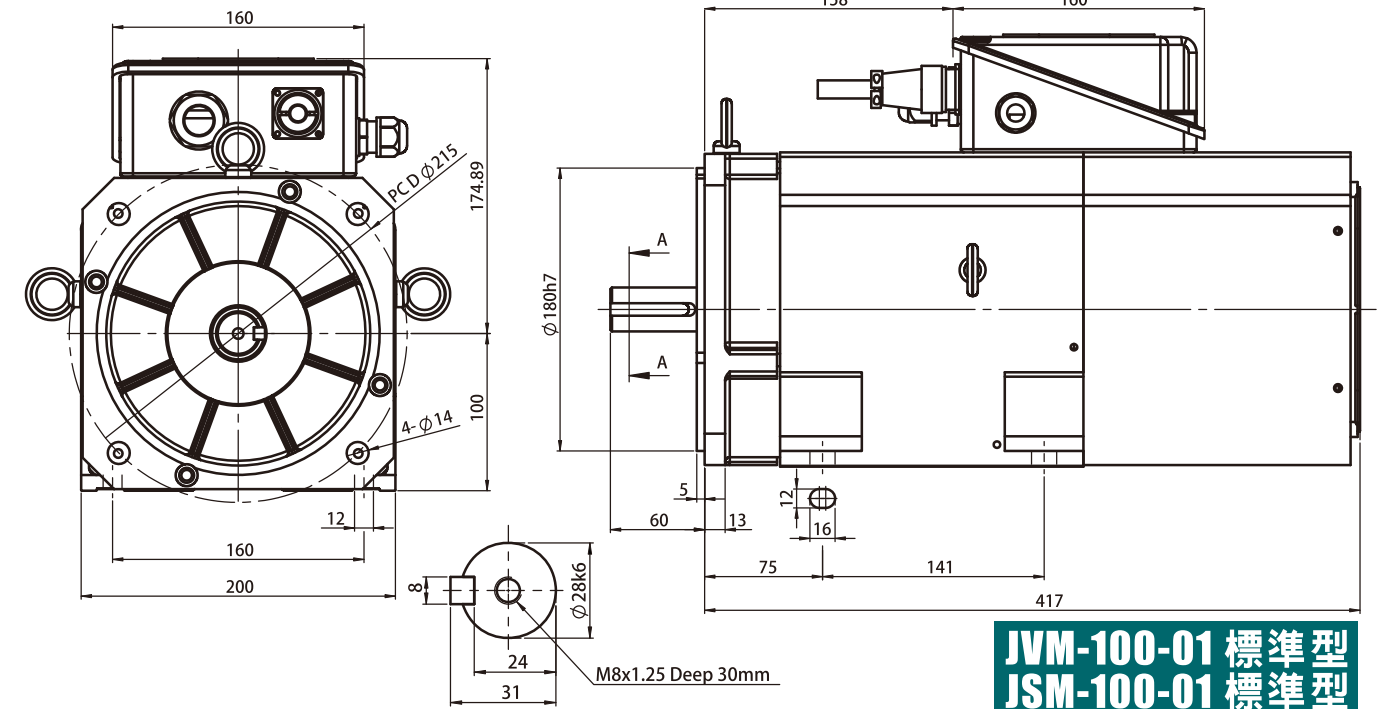
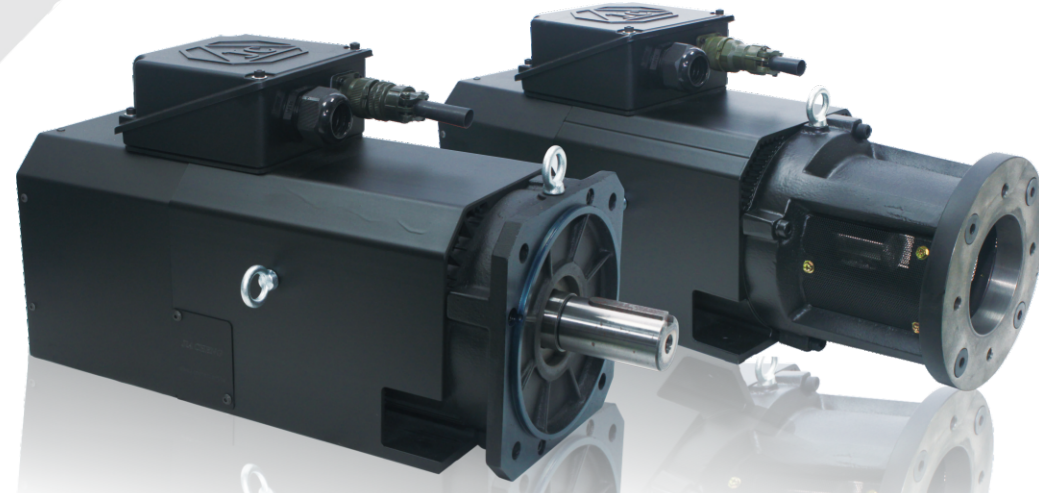


依美國ANSI B92.1規範
 模數：D.P.16/32
 壓力角：30度
 齒數：9齒
 節圓直徑：14.2875mm

JVM-090-04直結型
JSM-090-04直結型



JVM-090-04長嘴型
JSM-090-04長嘴型

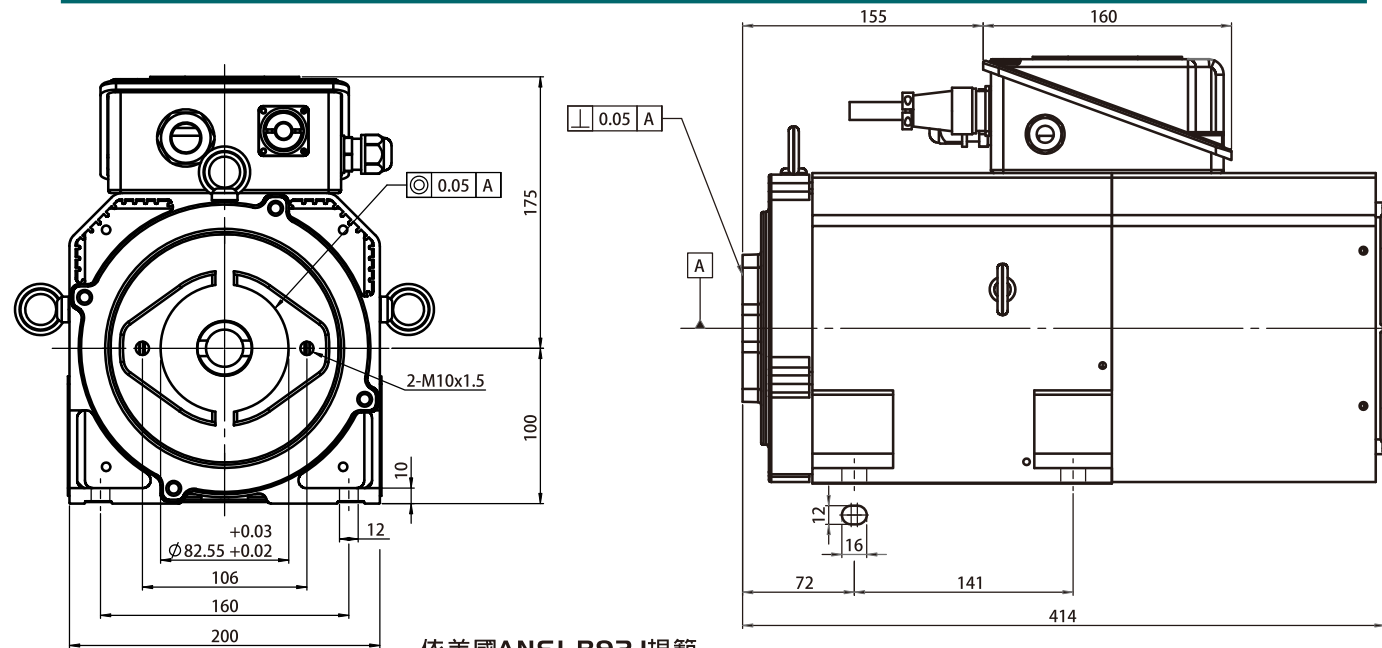


JVM-100-01 標準型
JSM-100-01 標準型

Standard

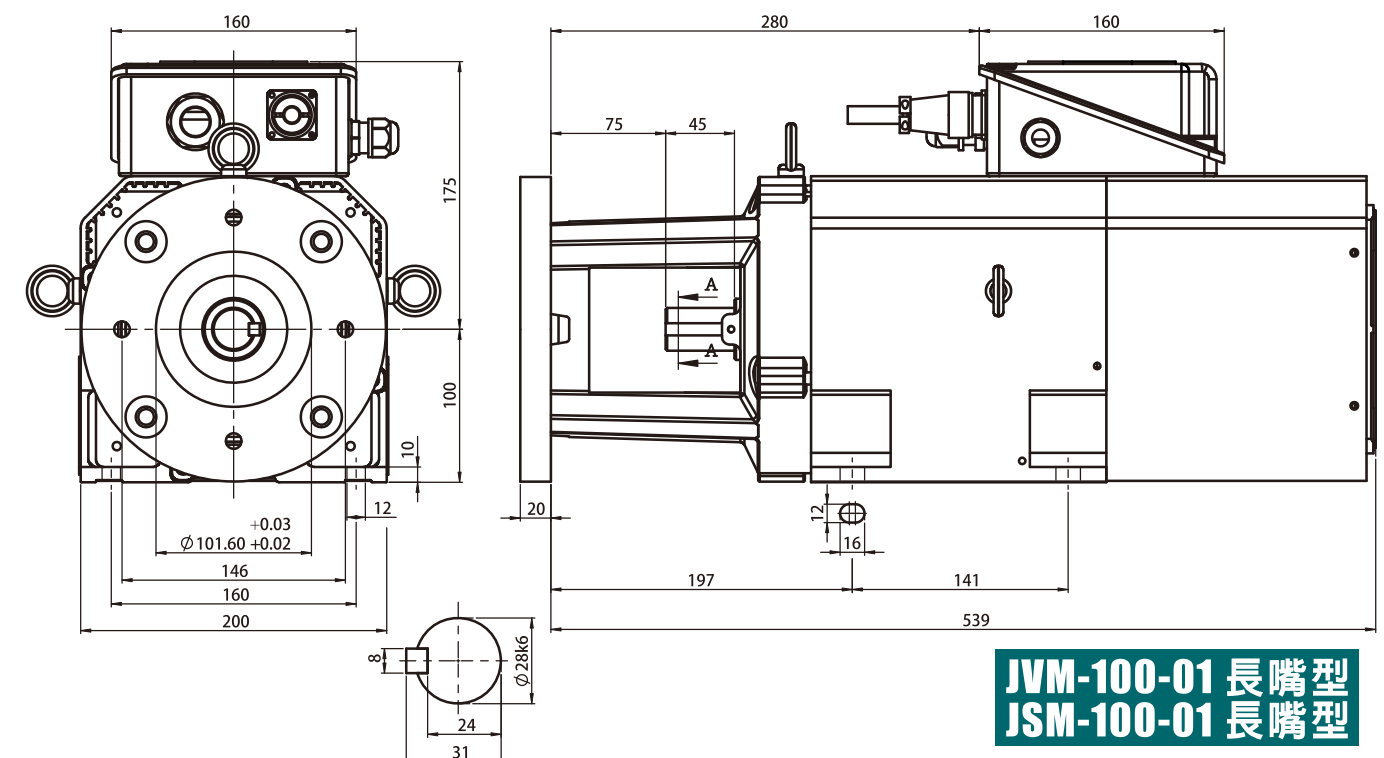
Motor Type	Rated Power (kw)	Rated Speed (rpm)	Rated Torque (Nm)	Rated Voltage (V)	Rated Current (A)
JVM-100-01-10 JSM-100-01-10	2.2	1000	21.0	220 / 380	8.6/4.9
JVM-100-01-15 JSM-100-01-15	3.7	1500	24.8		15.4/8.8
JVM-100-01-20 JSM-100-01-20	5.5	2000	26.3		20.8/12

Rated Frequency (Hz)	Poles (P)	Efficiency (%)	Max Speed (rpm)	Inertia (kg-cm ²)	Bearings	Weight (kg)
35.5	4	84.3	8000	163	LS:6307 OS:6306	
52.2		83.8				
68.8		83.2				



依美國ANSI B92.1規範
模數：D.P16/32
壓力角：30度
齒數：9齒
節圓直徑：14.2875mm

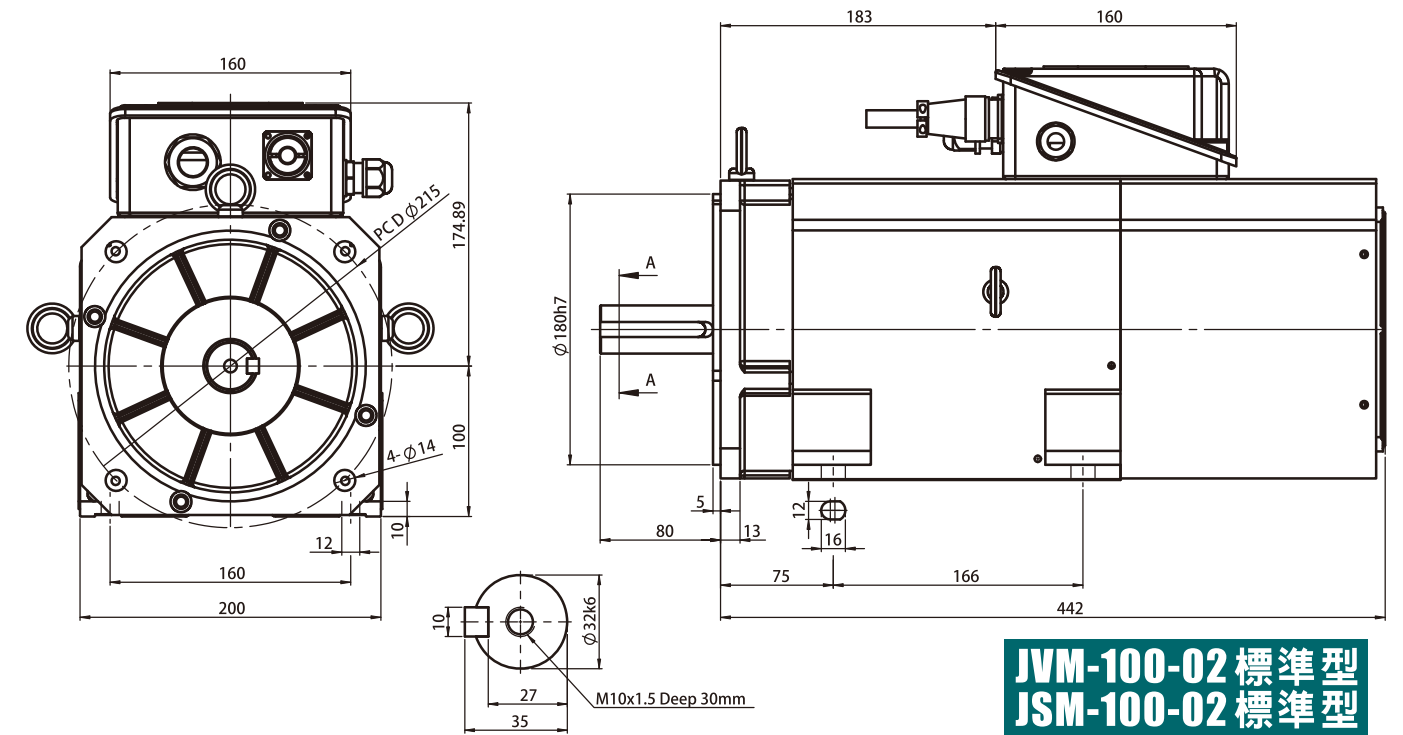
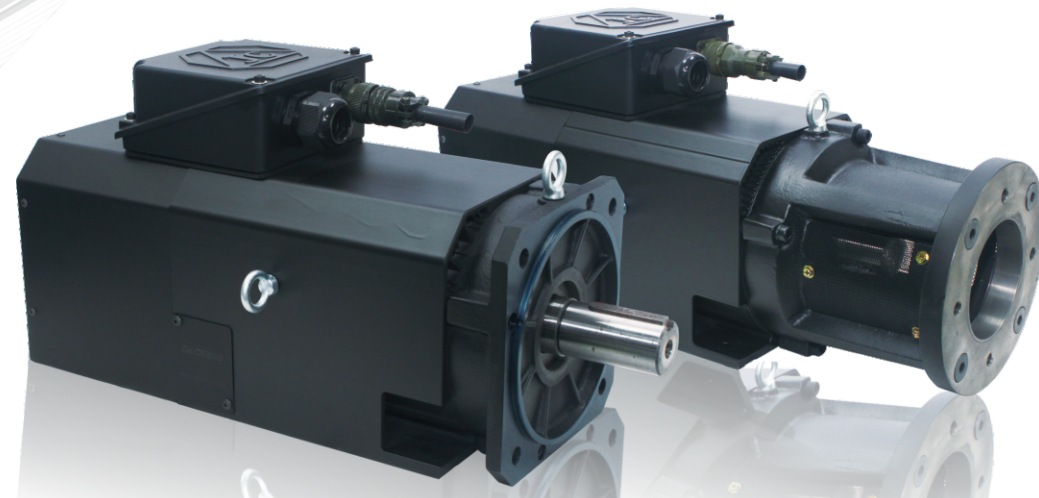
JVM-100-01 直結型
JSM-100-01 直結型



JVM-100-01 長嘴型
JSM-100-01 長嘴型

Due to we continue to develop the products, we reserve the right to modify or improve the designs, features or specifications of our product at any time without notice.

由於本產品持續開發中，因此本公司保留隨時修改產品的設計、特性或是規格變更的權利，恕不另行通知。

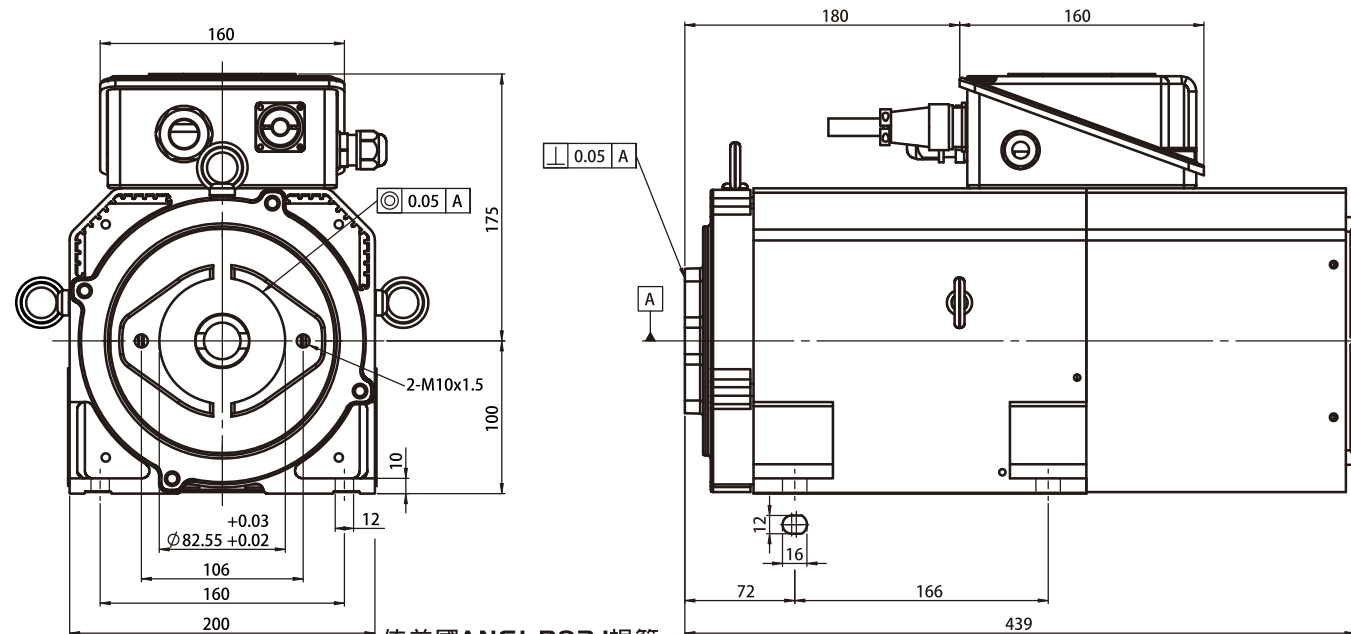


JVM-100-02 標準型
JSM-100-02 標準型

Standard

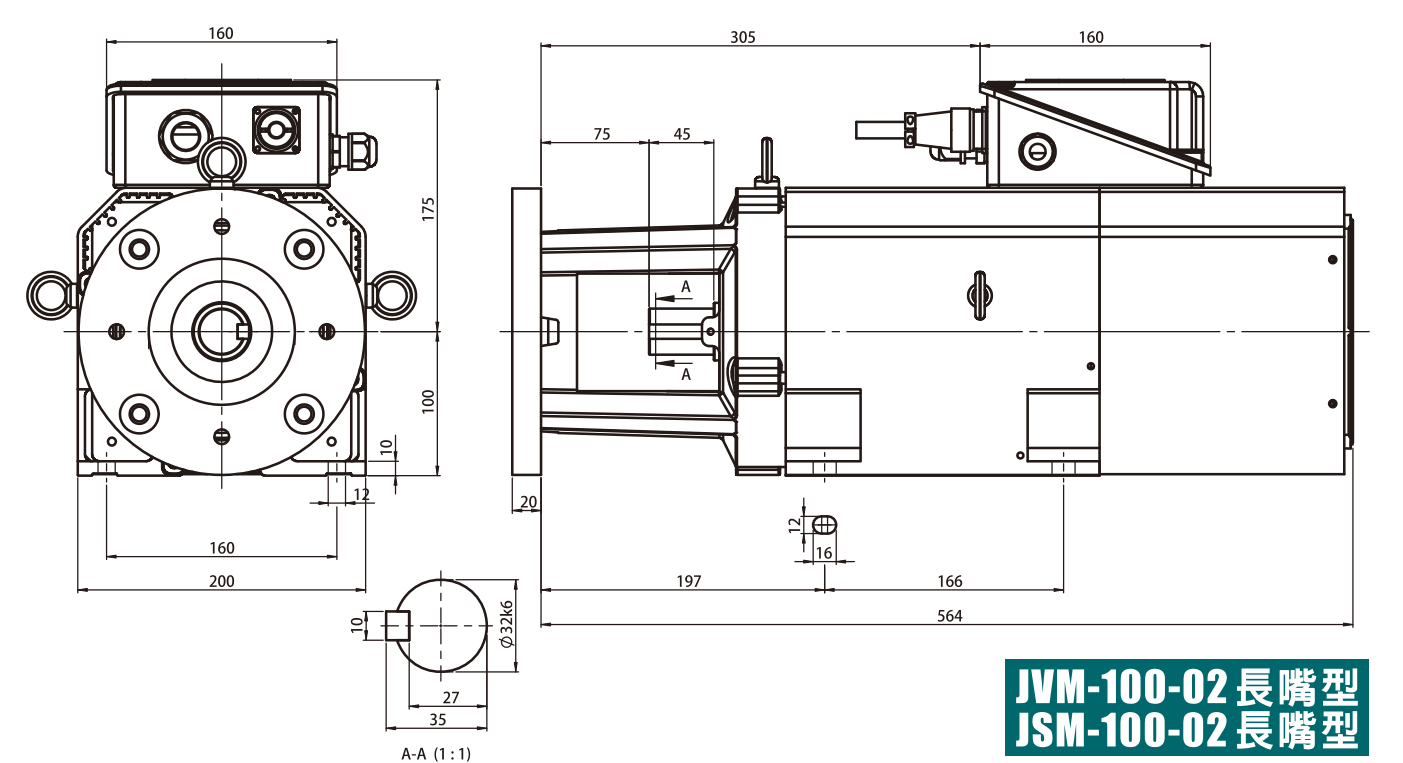
Motor Type	Rated Power (kw)	Rated Speed (rpm)	Rated Torque (Nm)	Rated Voltage (V)	Rated Current (A)
JVM-100-02-10 JSM-100-02-10	3.7	1000	35.3	220 / 380	15.4/8.8
JVM-100-02-15 JSM-100-02-15	5.5	1500	35.0		20.8/12
JVM-100-02-20 JSM-100-02-20	7.5	2000	35.8		27.0/15.5

Rated Frequency (Hz)	Poles (P)	Efficiency (%)	Max Speed (rpm)	Inertia (kg-cm ²)	Bearings	Weight (kg)
35.2	4	87.6	8000	194	LS:6307 OS:6306	48
51.9		86.9				
68.5		86.4				

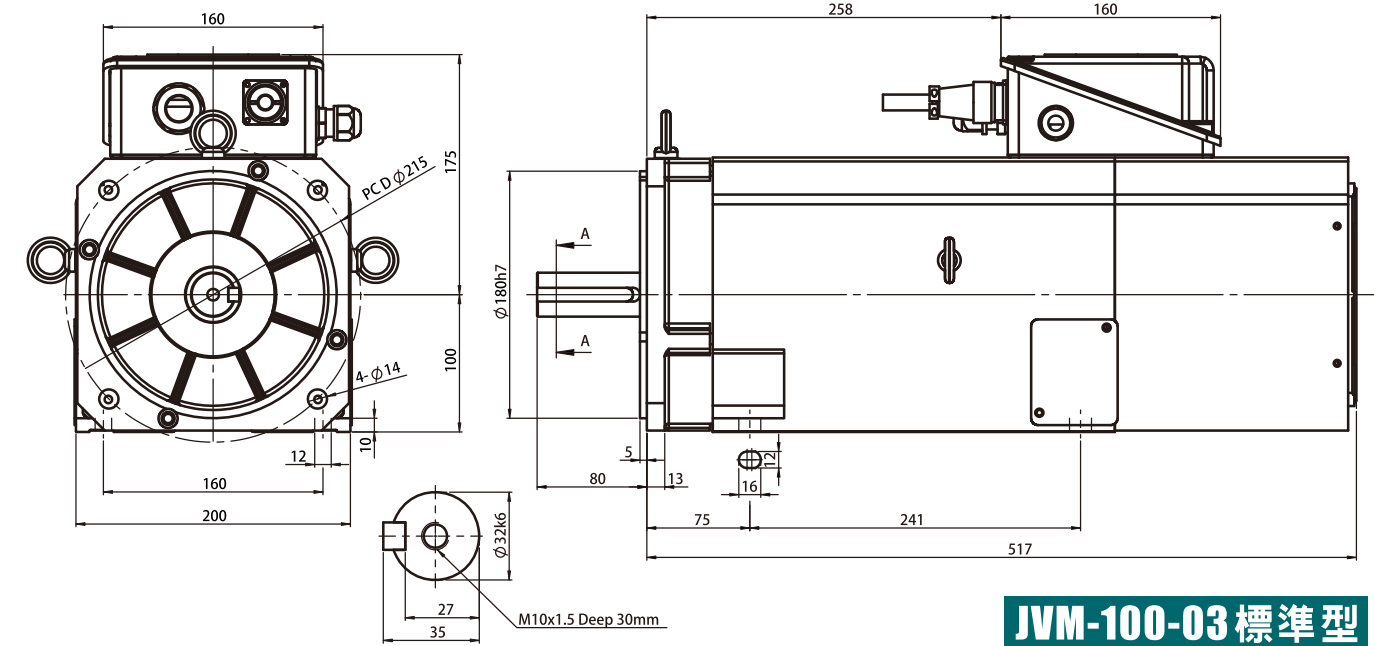
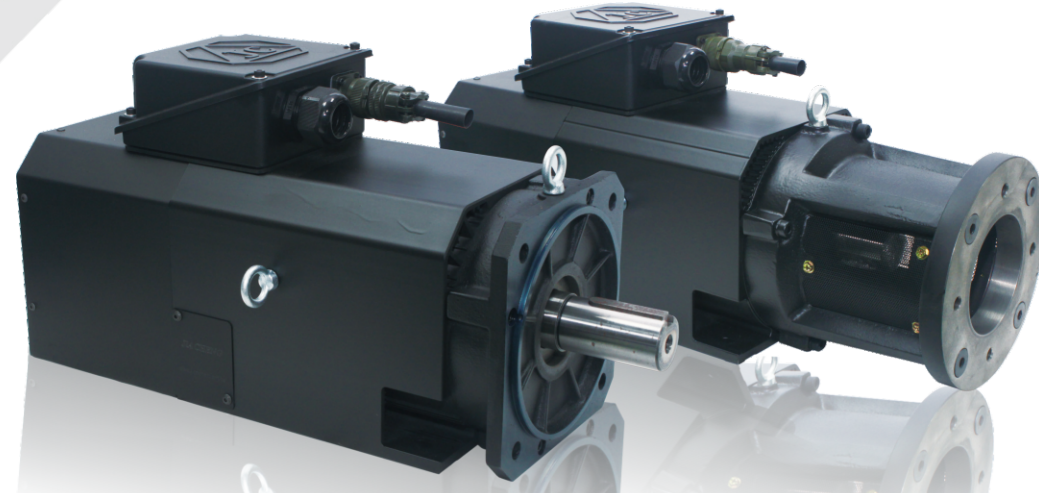


依美國ANSI B92.1規範
模數：D.P16/32
壓力角：30度
齒數：9齒
節圓直徑：14.2875mm

JVM-100-02 直結型
JSM-100-02 直結型



JVM-100-02 長嘴型
JSM-100-02 長嘴型

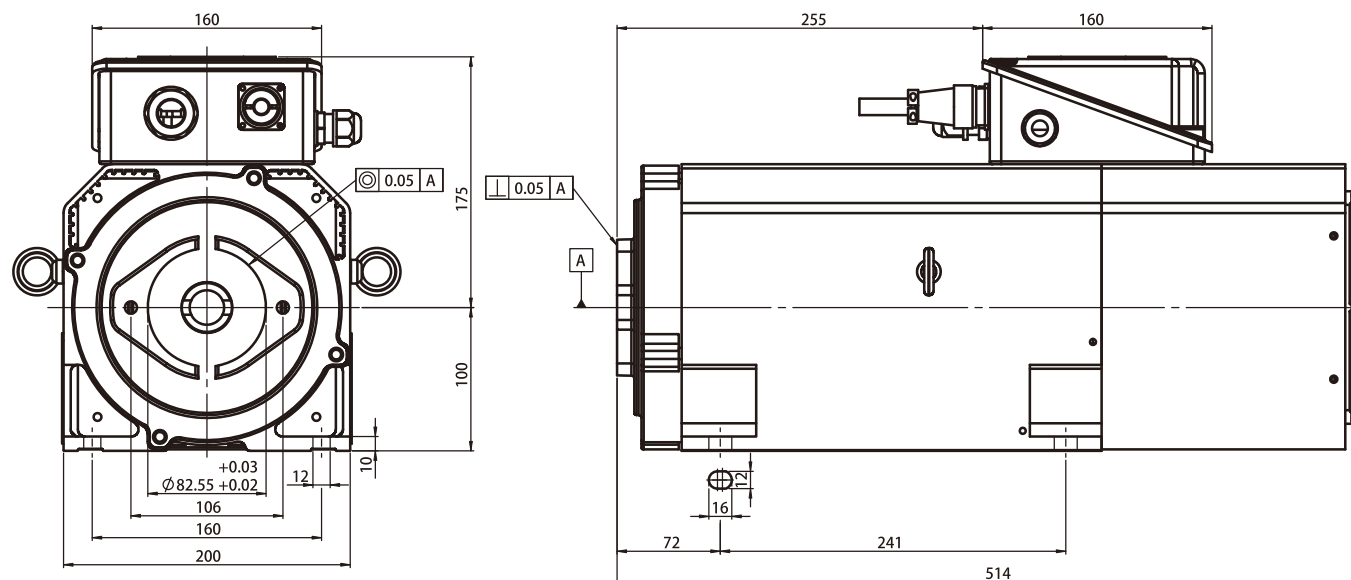


JVM-100-03 標準型
JSM-100-03 標準型

Standard

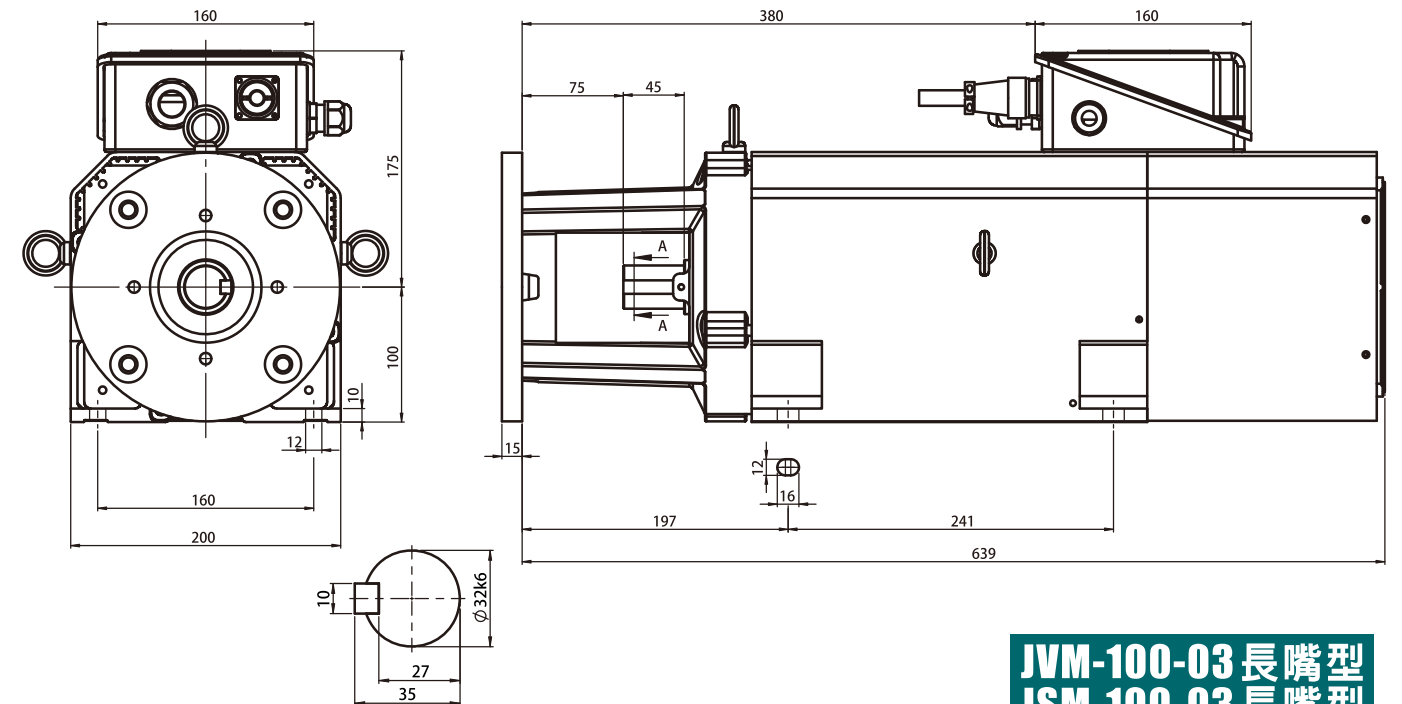
Motor Type	Rated Power (kw)	Rated Speed (rpm)	Rated Torque (Nm)	Rated Voltage (V)	Rated Current (A)
JVM-100-03-10 JSM-100-03-10	5.5	1000	52.5	220 / 380	20.8/12
JVM-100-03-15 JSM-100-03-15	7.5	1500	47.8		27.0/15.5
JVM-100-03-20 JSM-100-03-20	11.0	2000	52.5		40.0/23.13

Rated Frequency (Hz)	Poles (P)	Efficiency (%)	Max Speed (rpm)	Inertia (kg-cm ²)	Bearings	Weight (kg)
35.5	4	85.9	8000	272	LS:6307 OS:6306	
52.2		85.3				
68.8		84.9				

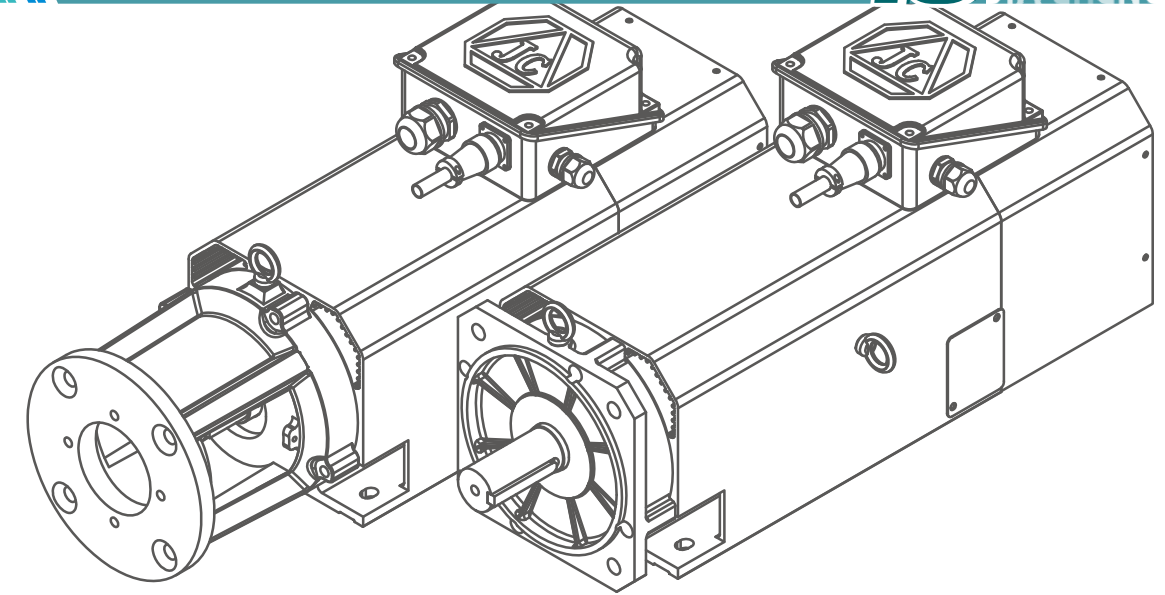
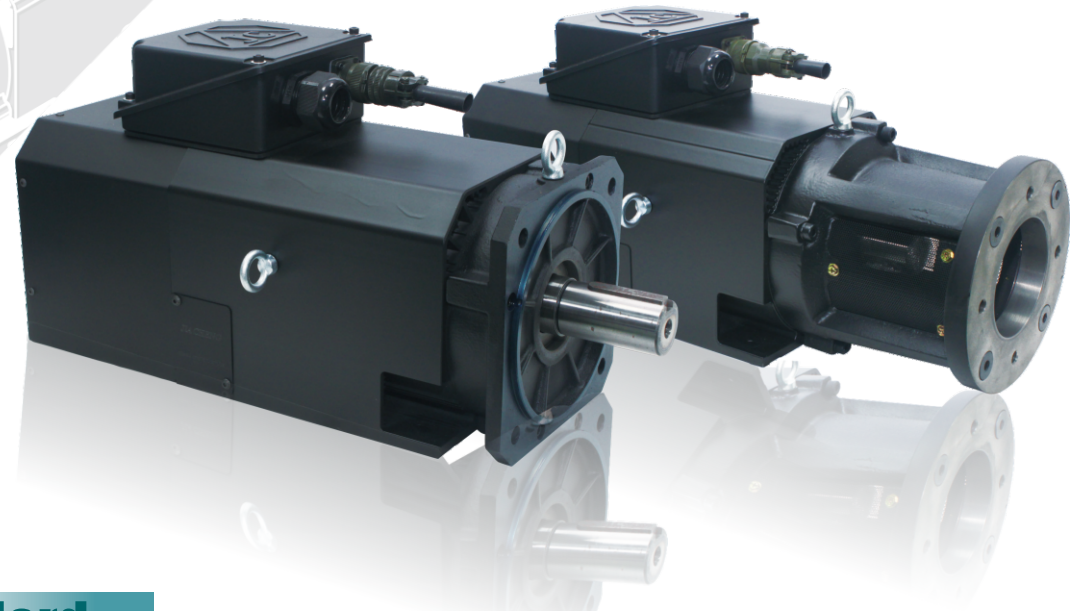


依美國ANSI B92.1規範
模數：D.P16/32
壓力角：30度
齒數：9齒
節圓直徑：14.2875mm

JVM-100-03 直結型
JSM-100-03 直結型



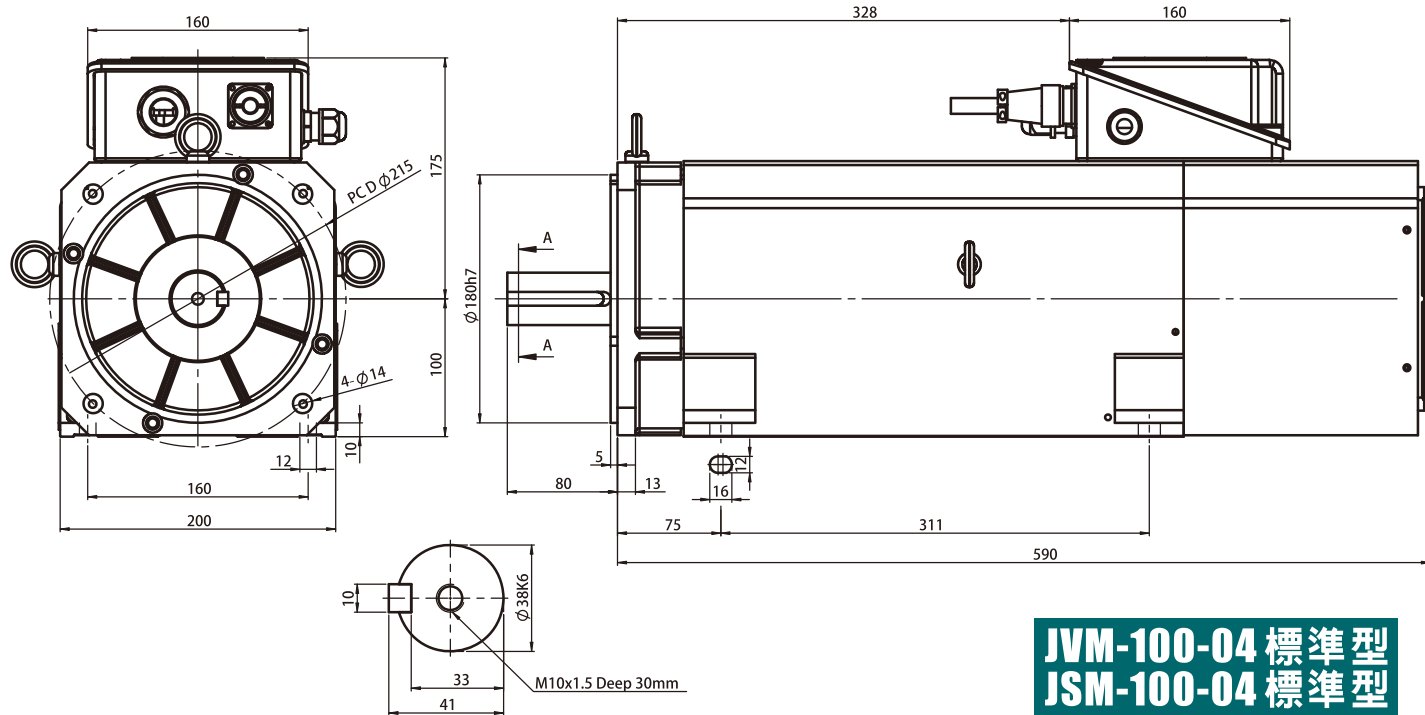
JVM-100-03 長嘴型
JSM-100-03 長嘴型



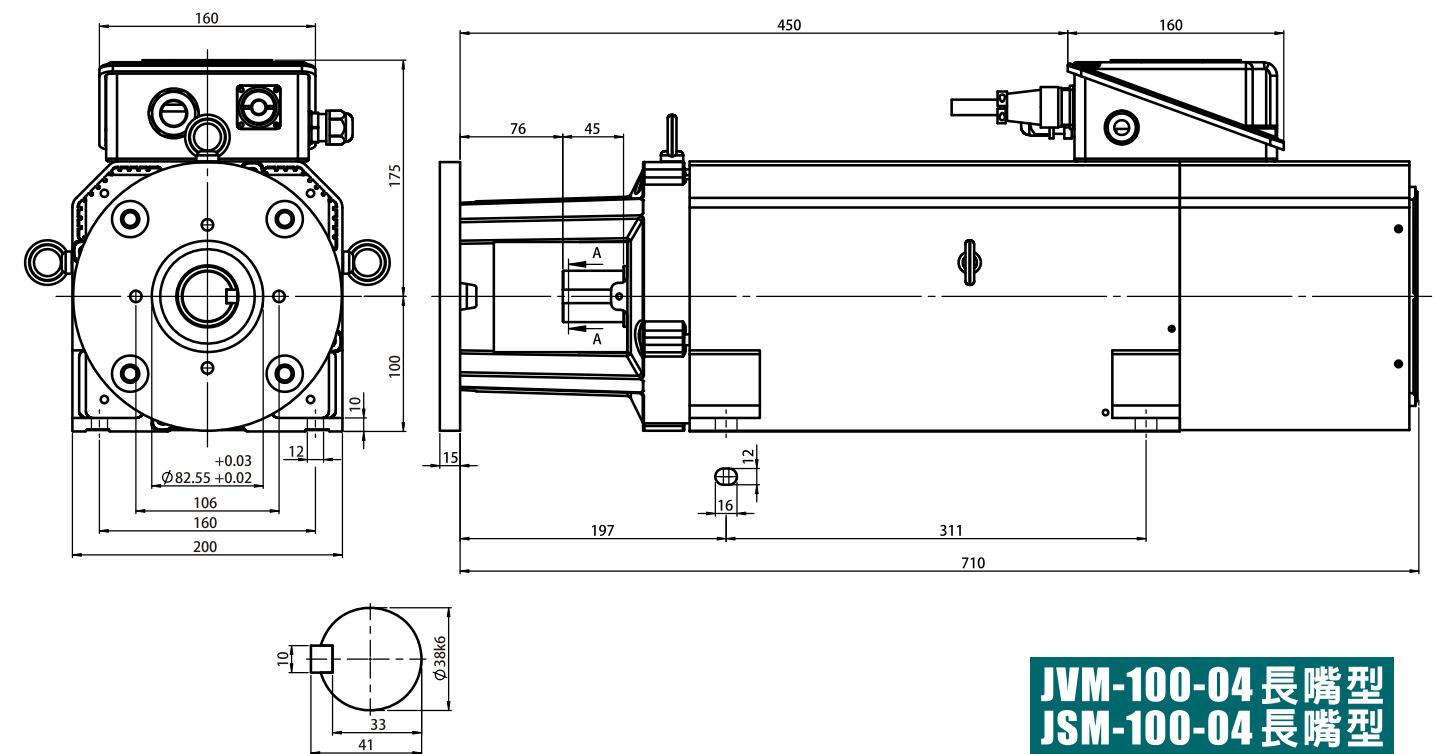
Standard

Motor Type	Rated Power (kw)	Rated Speed (rpm)	Rated Torque (Nm)	Rated Voltage (V)	Rated Current (A)
JVM-100-04-10 JSM-100-04-10	7.5	1000	71.6	220 / 380	27.0/15.5
JVM-100-04-15 JSM-100-04-15	11.0	1500	70.0		40.0/23.13
JVM-100-04-20 JSM-100-04-20	15.0	2000	71.6		51.8/29.9

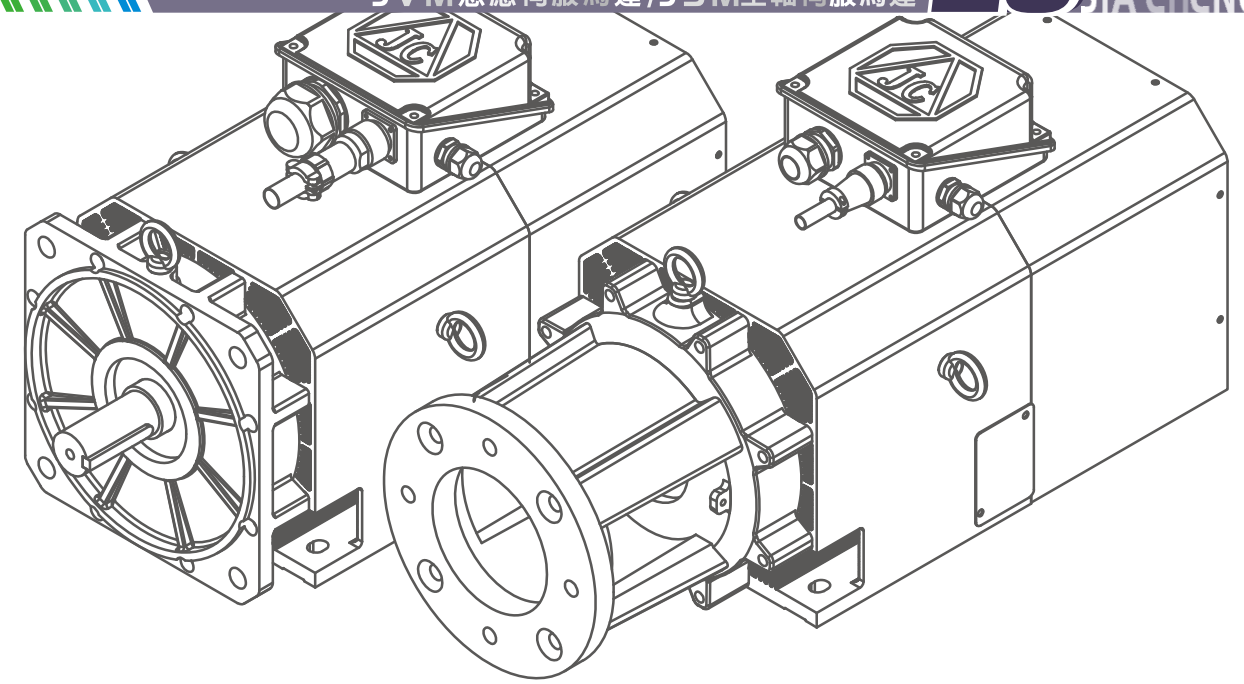
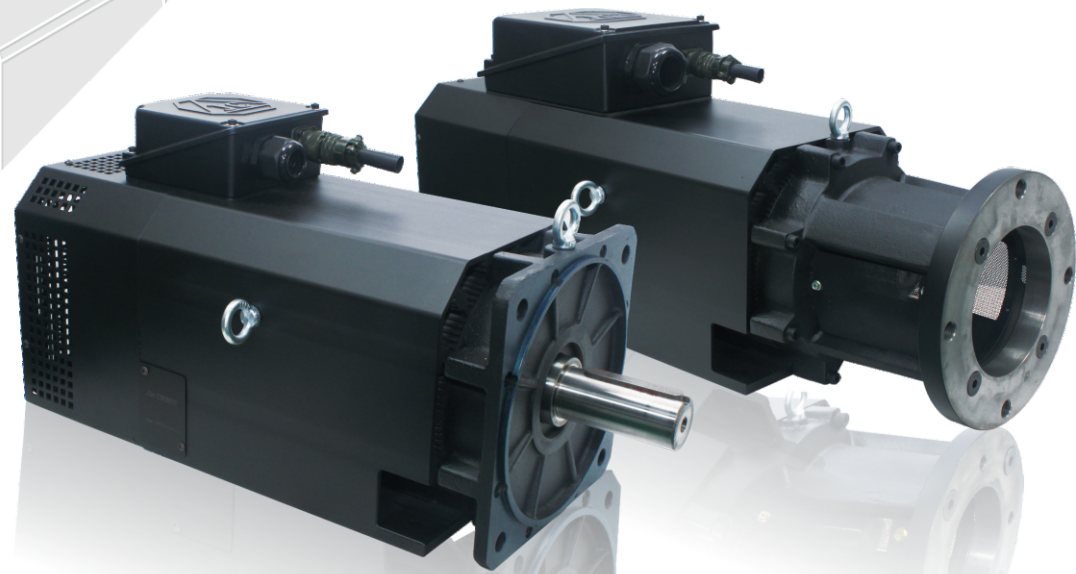
Rated Frequency (Hz)	Poles (P)	Efficiency (%)	Max Speed (rpm)	Inertia (kg-cm ²)	Bearings	Weight (kg)
36.2	4	85.9	8000	349	LS:6308 OS:6306	
52.9		85.0				
69.5		84.3				



JVM-100-04 標準型
JSM-100-04 標準型



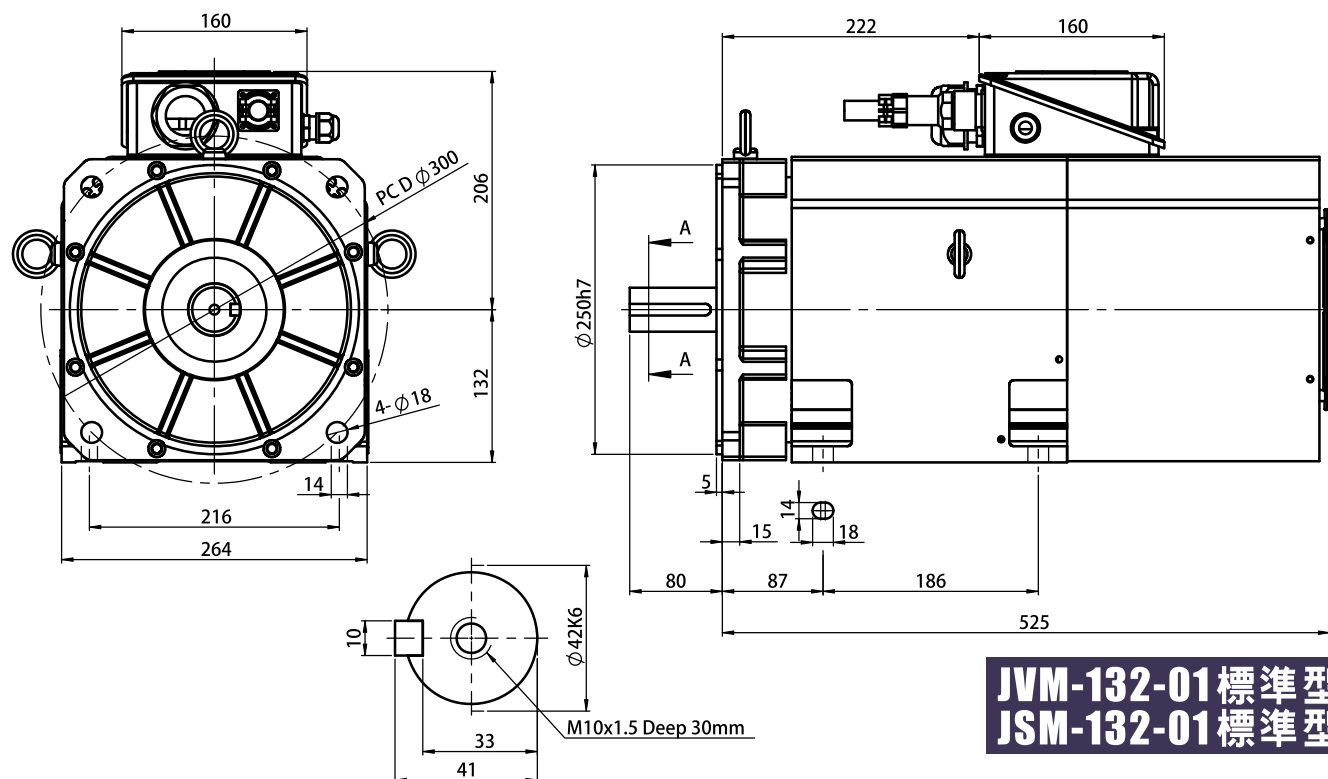
JVM-100-04 長嘴型
JSM-100-04 長嘴型



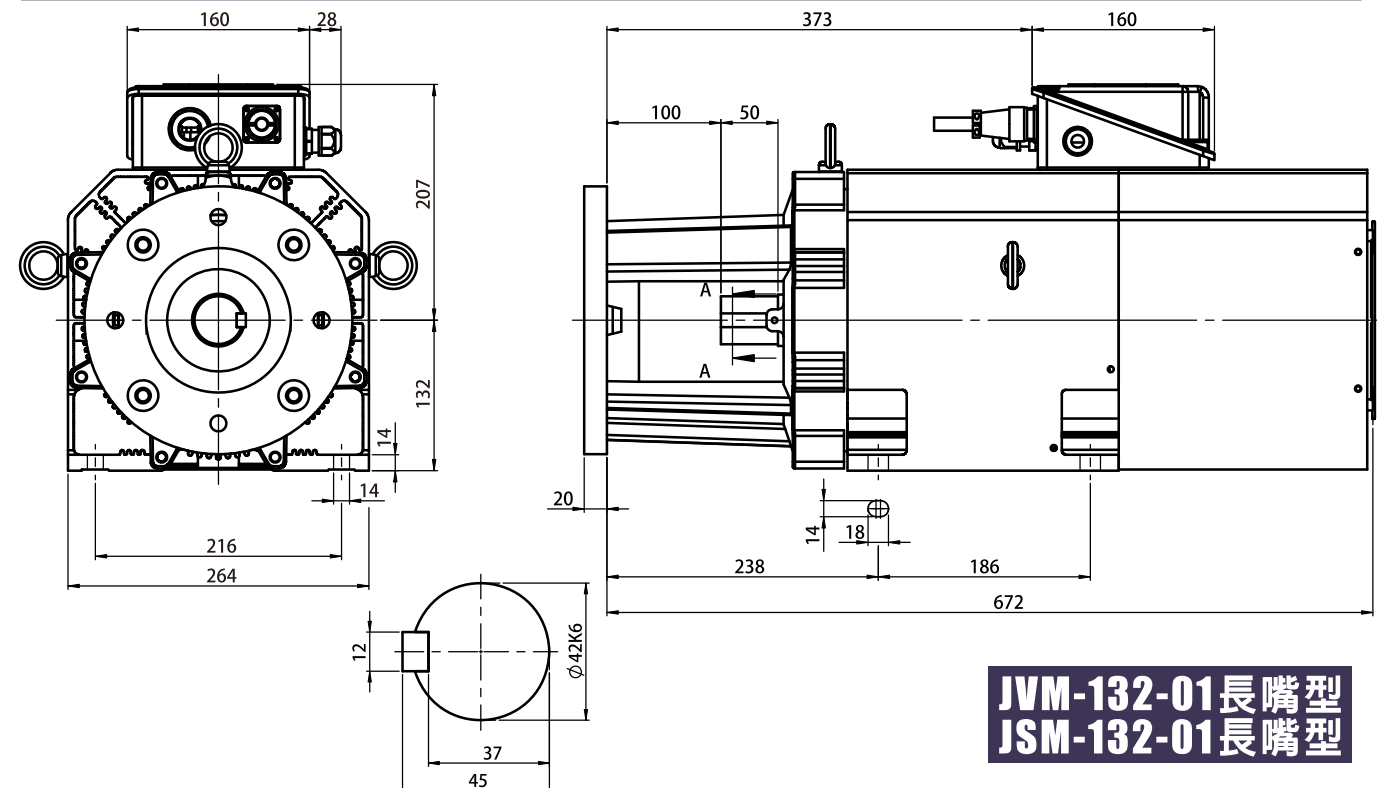
Standard

Motor Type	Rated Power (kw)	Rated Speed (rpm)	Rated Torque (Nm)	Rated Voltage (V)	Rated Current (A)
JVM-132-01-10 JSM-132-01-10	7.5	1000	71.6	220 / 380	27.0/15.5
JVM-132-01-15 JSM-132-01-15	11.0	1500	70.0		40.0/23.13
JVM-132-01-20 JSM-132-01-20	15.0	2000	71.6		51.8/29.9

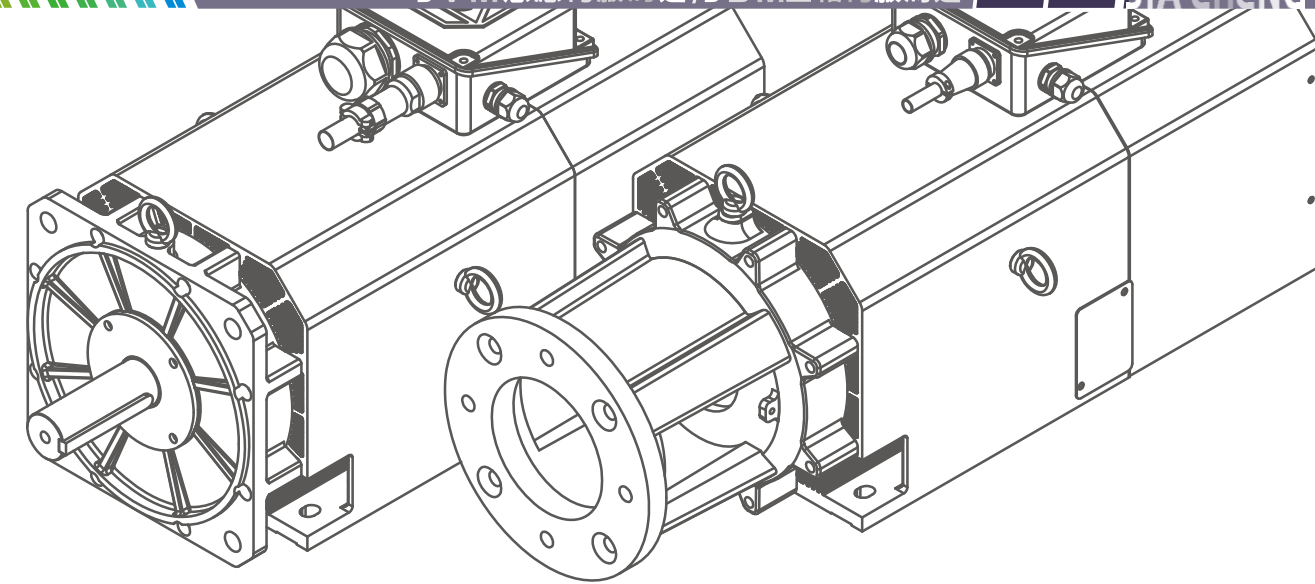
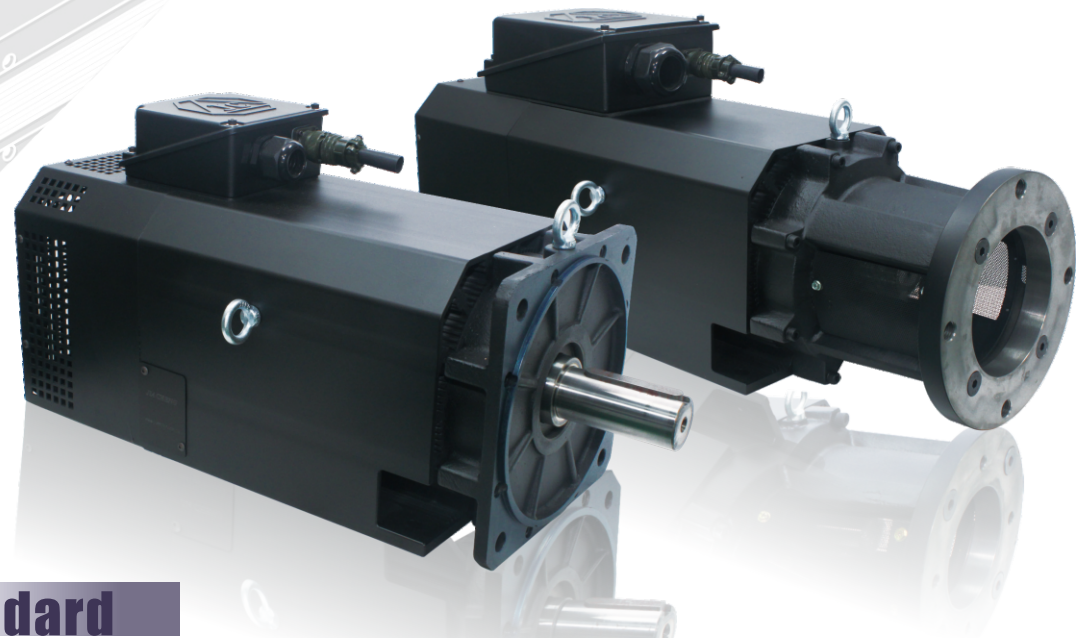
Rated Frequency (Hz)	Poles (P)	Efficiency (%)	Max Speed (rpm)	Inertia (kg-cm ²)	Bearings	Weight (kg)
35.2	4	87.3	6000	404	LS:6309 OS:6308	
51.9		86.4				
68.5		85.9				



JVM-132-01標準型
JSM-132-01標準型



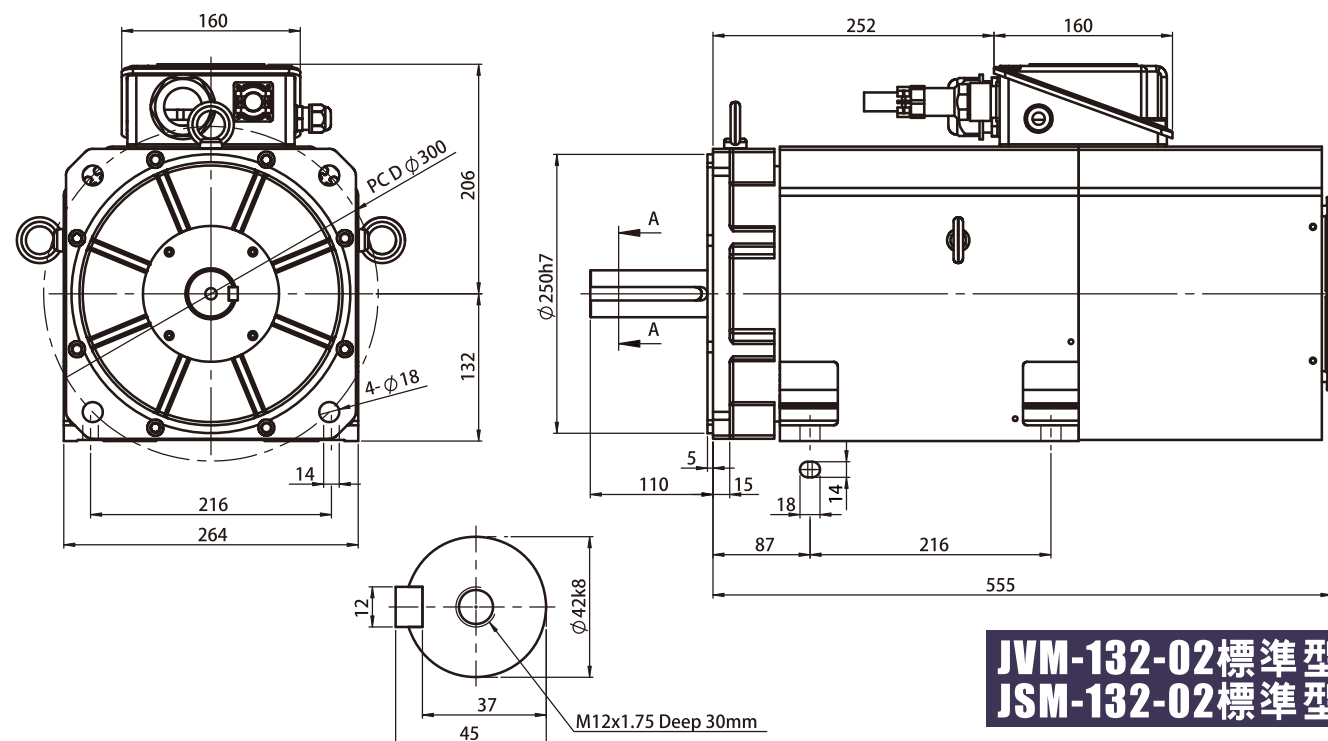
JVM-132-01長嘴型
JSM-132-01長嘴型



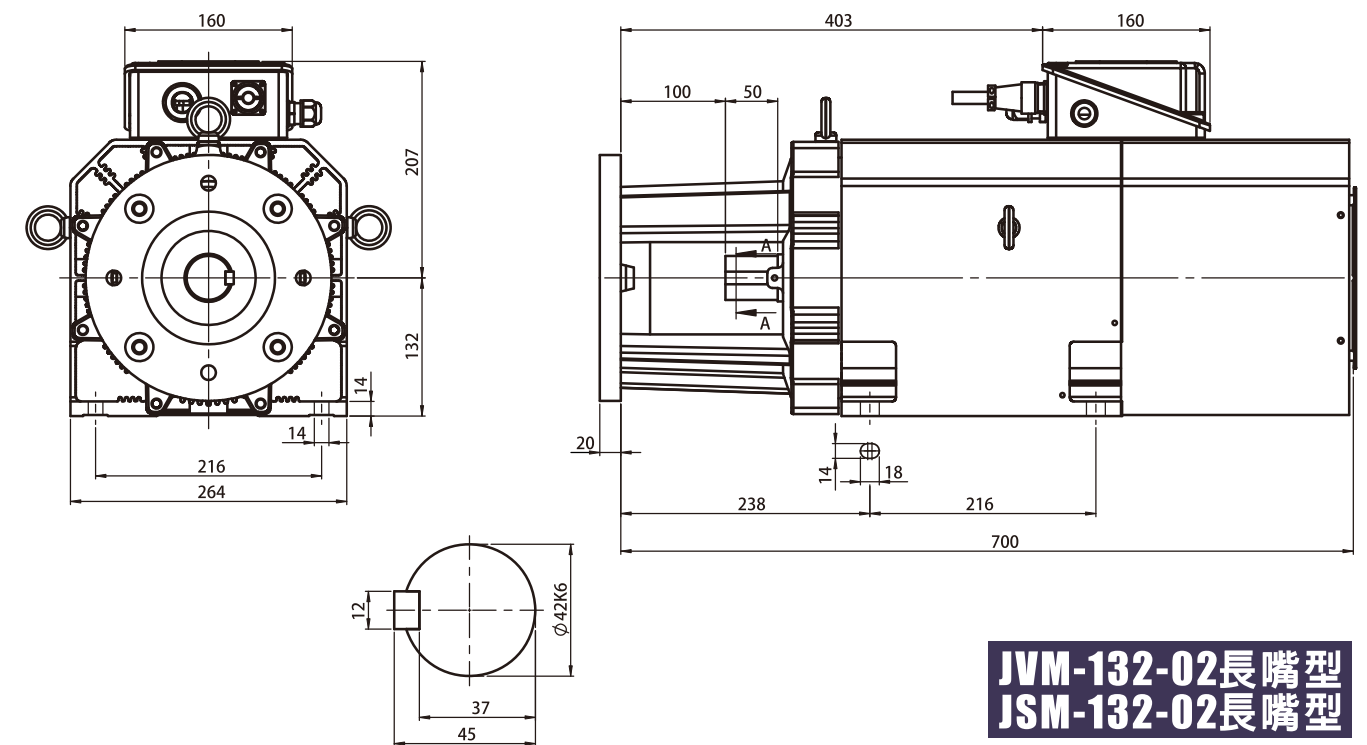
Standard

Motor Type	Rated Power (kw)	Rated Speed (rpm)	Rated Torque (Nm)	Rated Voltage (V)	Rated Current (A)
JVM-132-02-10 JSM-132-02-10	11.0	1000	105.0	220 / 380	40.0/23.13
JVM-132-02-15 JSM-132-02-15	15.0	1500	95.5		51.8/29.9
JVM-132-02-20 JSM-132-02-20	18.5	2000	88.3		63.6/36.7

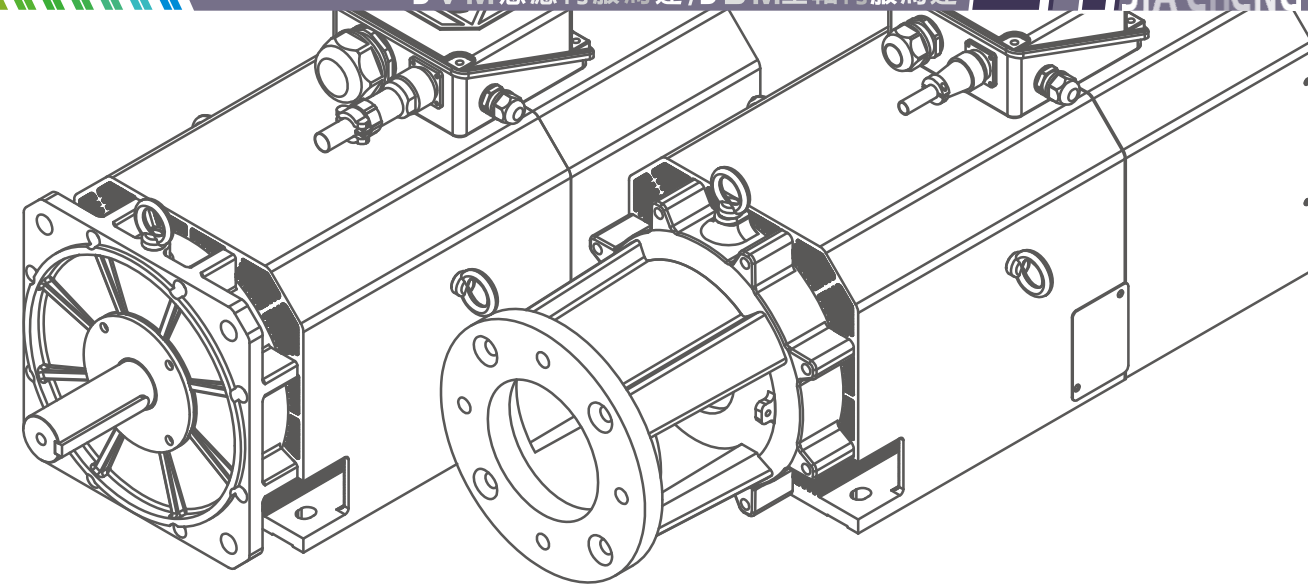
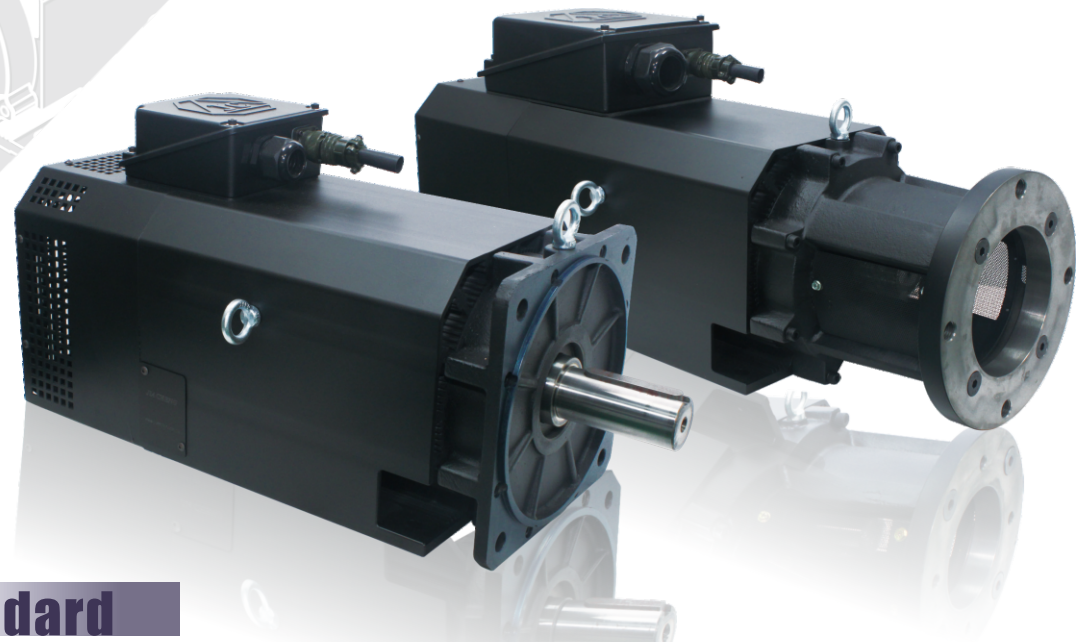
Rated Frequency (Hz)	Poles (P)	Efficiency (%)	Max Speed (rpm)	Inertia (kg-cm ²)	Bearings	Weight (kg)
35.5	4	87.6	6000	490	LS:6309 OS:6308	100
52.1		86.9				
68.7		86.3				



**JVM-132-02標準型
 JSM-132-02標準型**



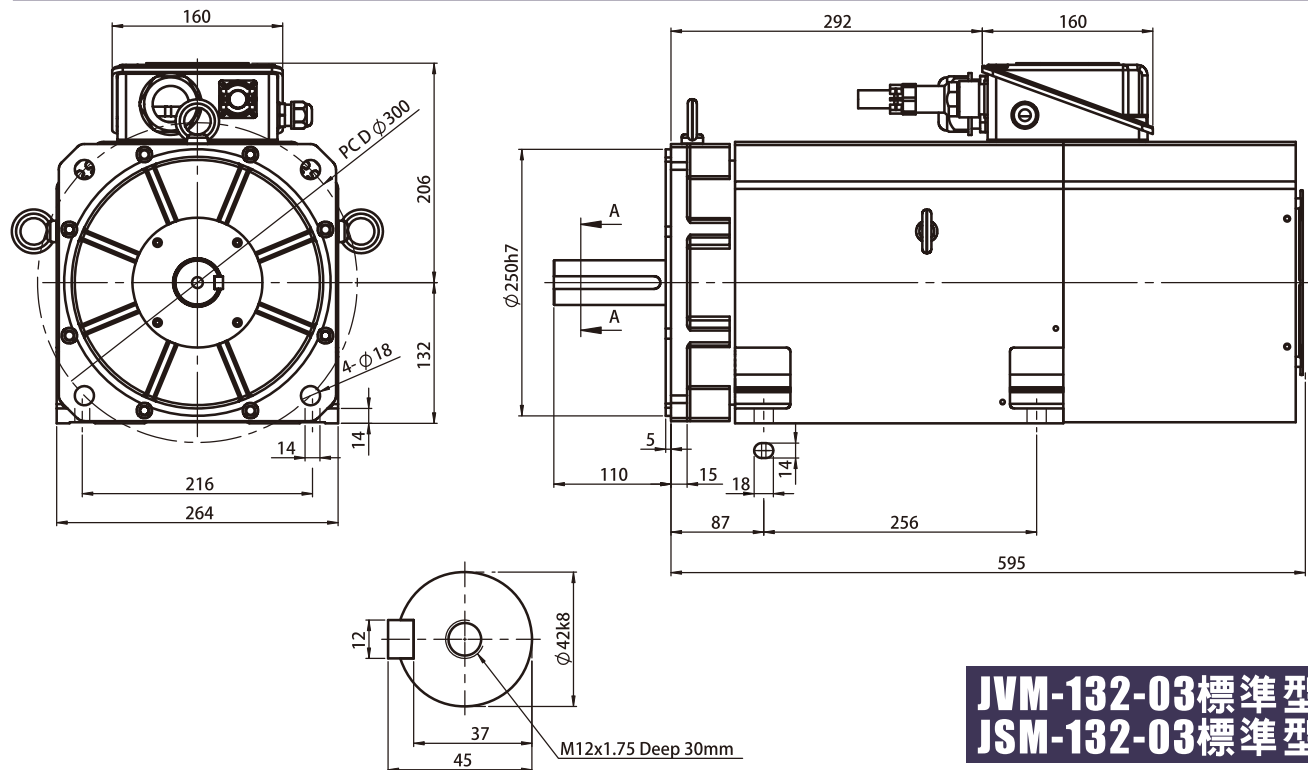
**JVM-132-02長嘴型
 JSM-132-02長嘴型**



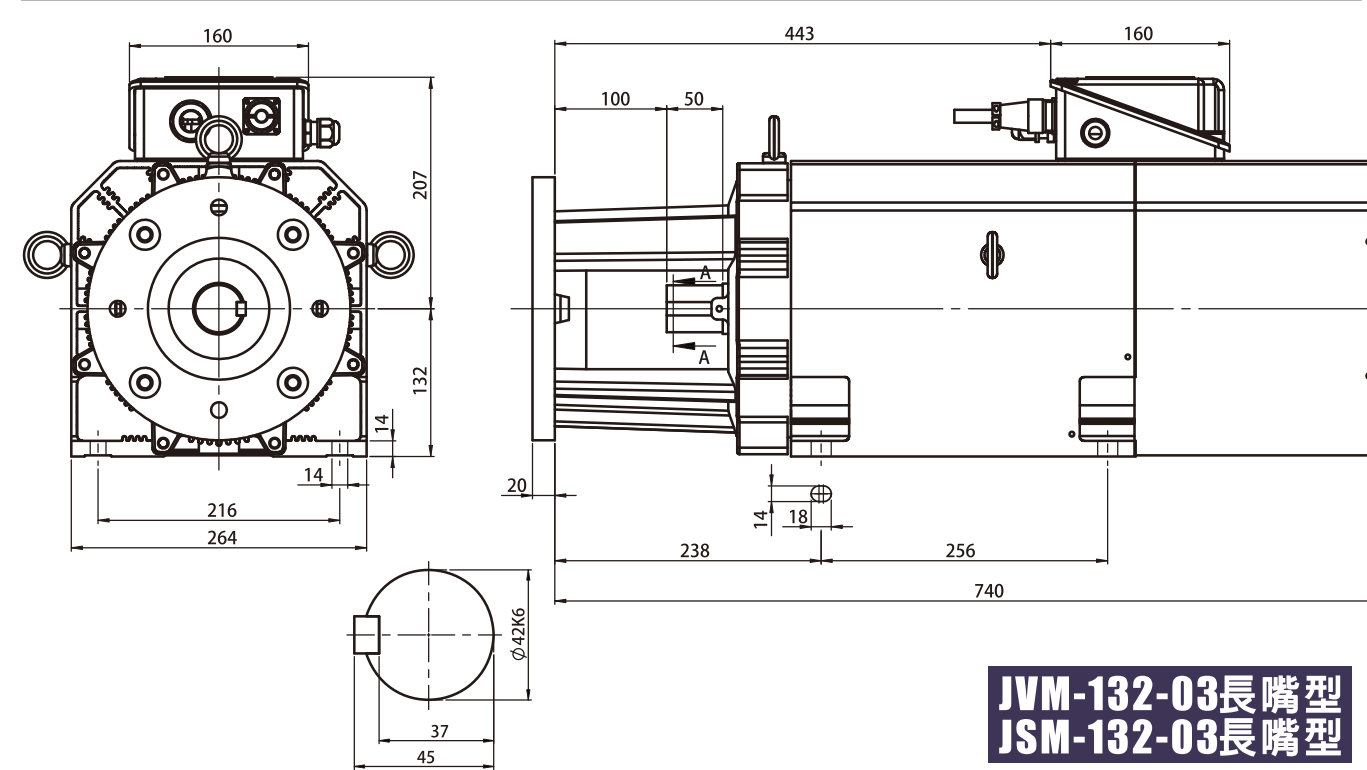
Standard

Motor Type	Rated Power (kw)	Rated Speed (rpm)	Rated Torque (Nm)	Rated Voltage (V)	Rated Current (A)
JVM-132-03-10 JSM-132-03-10	15.0	1000	143.2	220 / 380	51.8/29.9
JVM-132-03-15 JSM-132-03-15	18.5	1500	117.8		63.6/36.7
JVM-132-03-20 JSM-132-03-20	22.0	2000	105.0		74.8/43.2

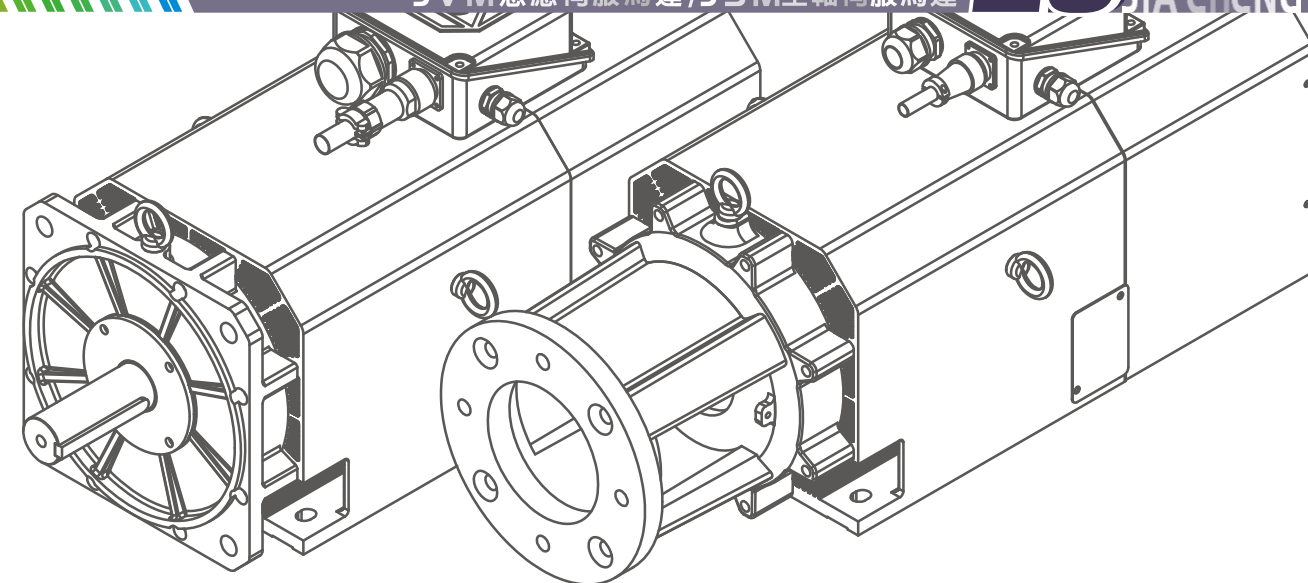
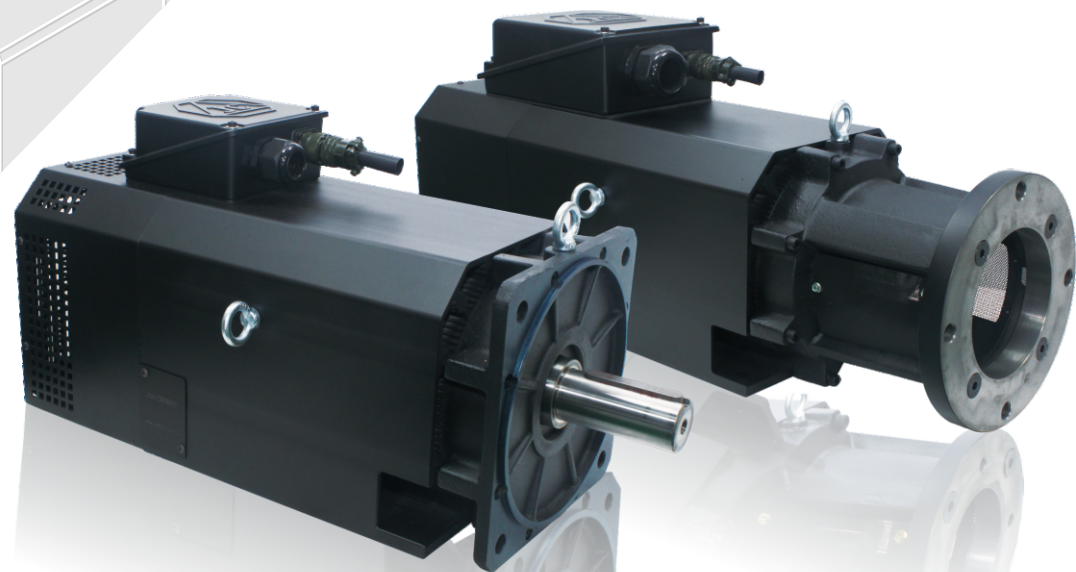
Rated Frequency (Hz)	Poles (P)	Efficiency (%)	Max Speed (rpm)	Inertia (kg-cm ²)	Bearings	Weight (kg)
35.3	4	88.7	6000	589	LS:6309 OS:6308	110
52.0		87.3				
68.6		86.4				



**JVM-132-03標準型
 JSM-132-03標準型**



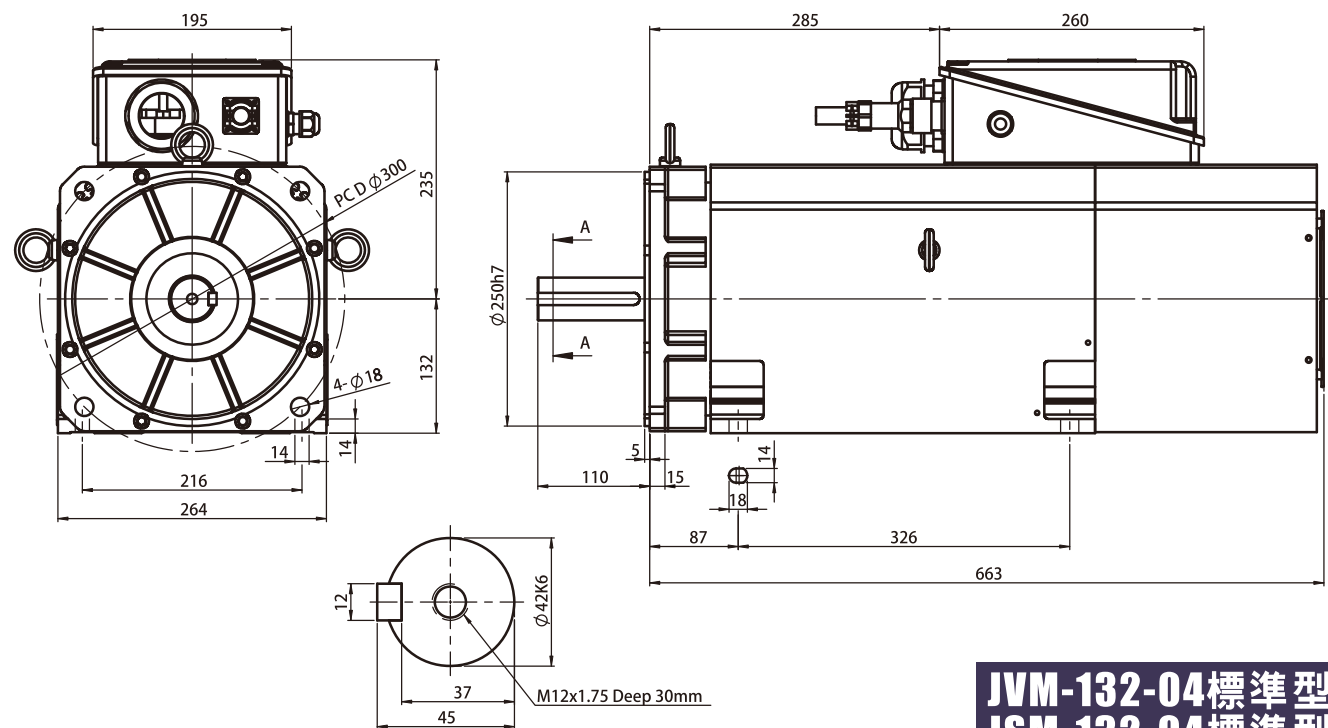
**JVM-132-03長嘴型
 JSM-132-03長嘴型**



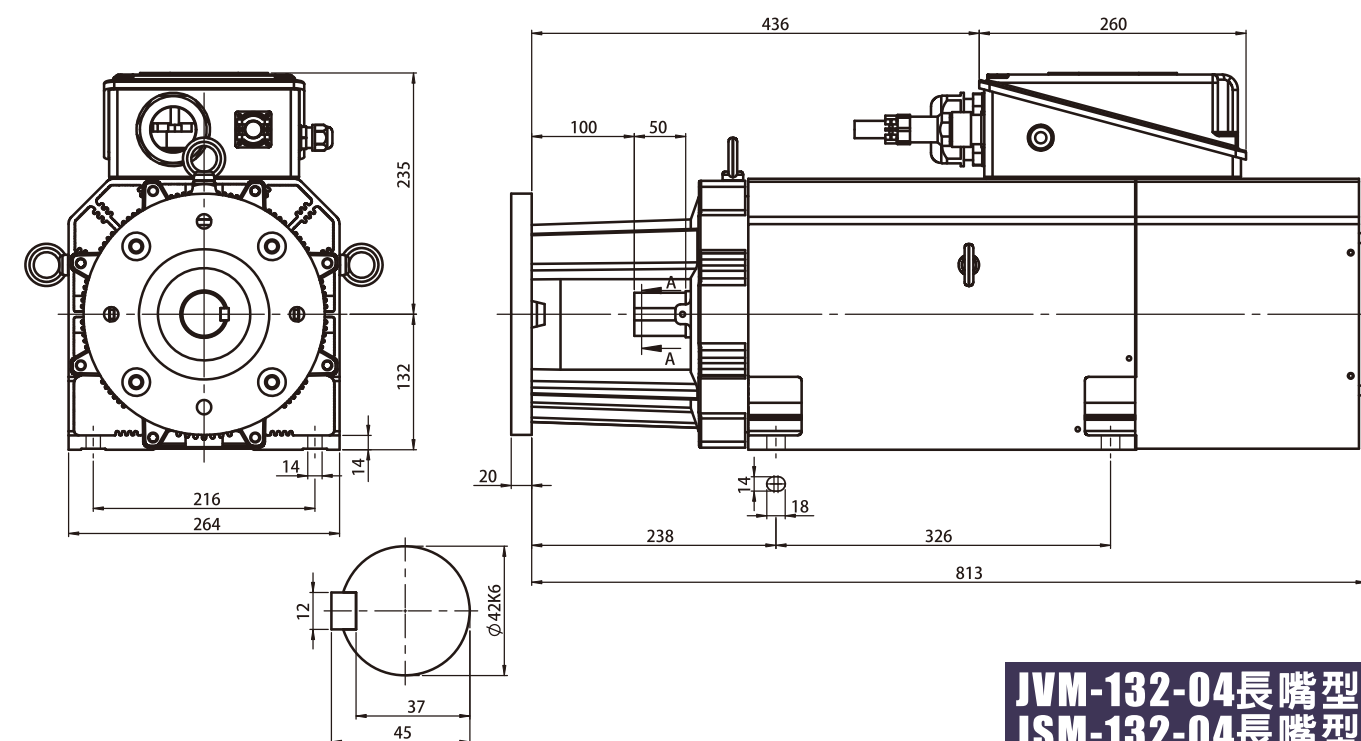
Standard

Motor Type	Rated Power (kw)	Rated Speed (rpm)	Rated Torque (Nm)	Rated Voltage (V)	Rated Current (A)
JVM-132-04-10 JSM-132-04-10	18.5	1000	176.7	220 / 380	63.6/36.7
JVM-132-04-15 JSM-132-04-15	22.0	1500	140.1		74.8/43.2
JVM-132-04-20 JSM-132-04-20	30.0	2000	143.2		103.9/60

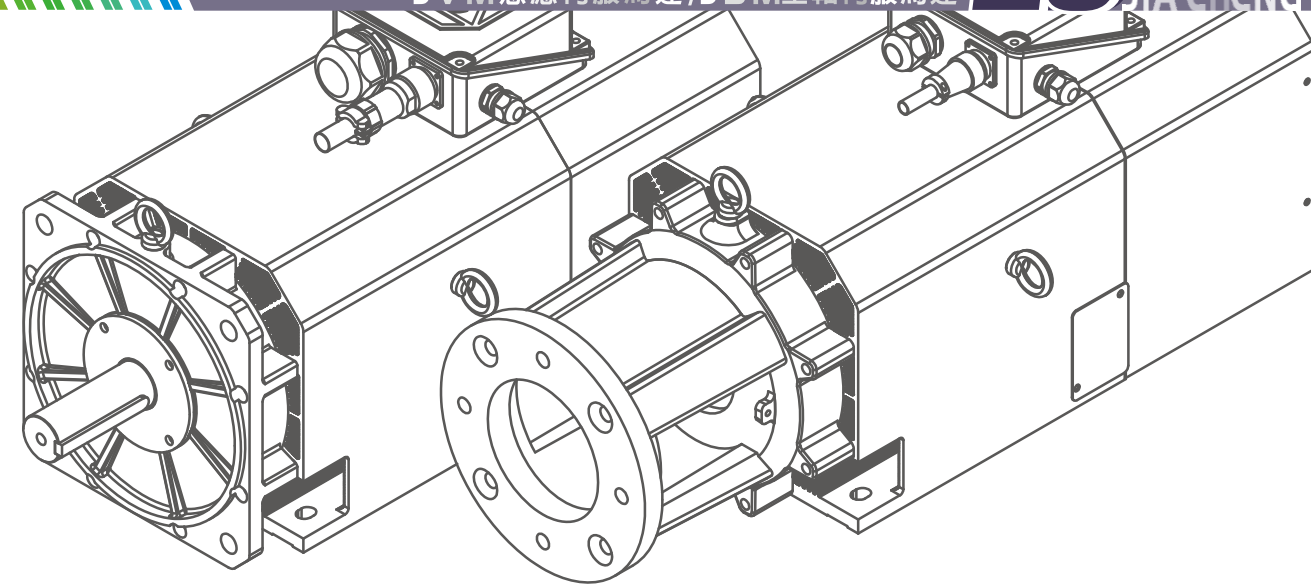
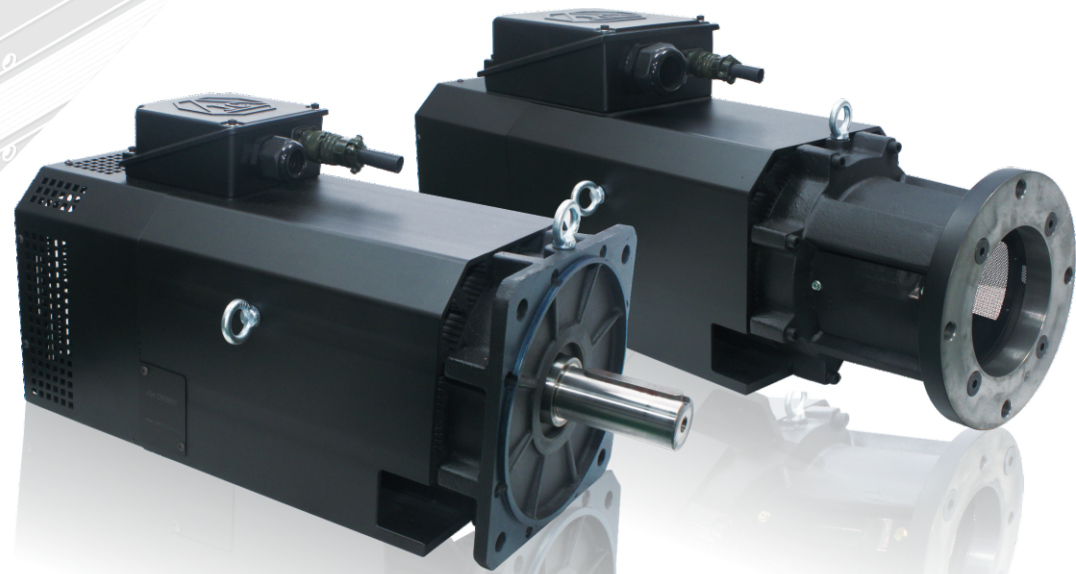
Rated Frequency (Hz)	Poles (P)	Efficiency (%)	Max Speed (rpm)	Inertia (kg-cm ²)	Bearings	Weight (kg)
35.0	4	89.1	6000	761	LS:6309 OS:6308	
51.7		88.7				
68.3		88.3				



**JVM-132-04標準型
 JSM-132-04標準型**



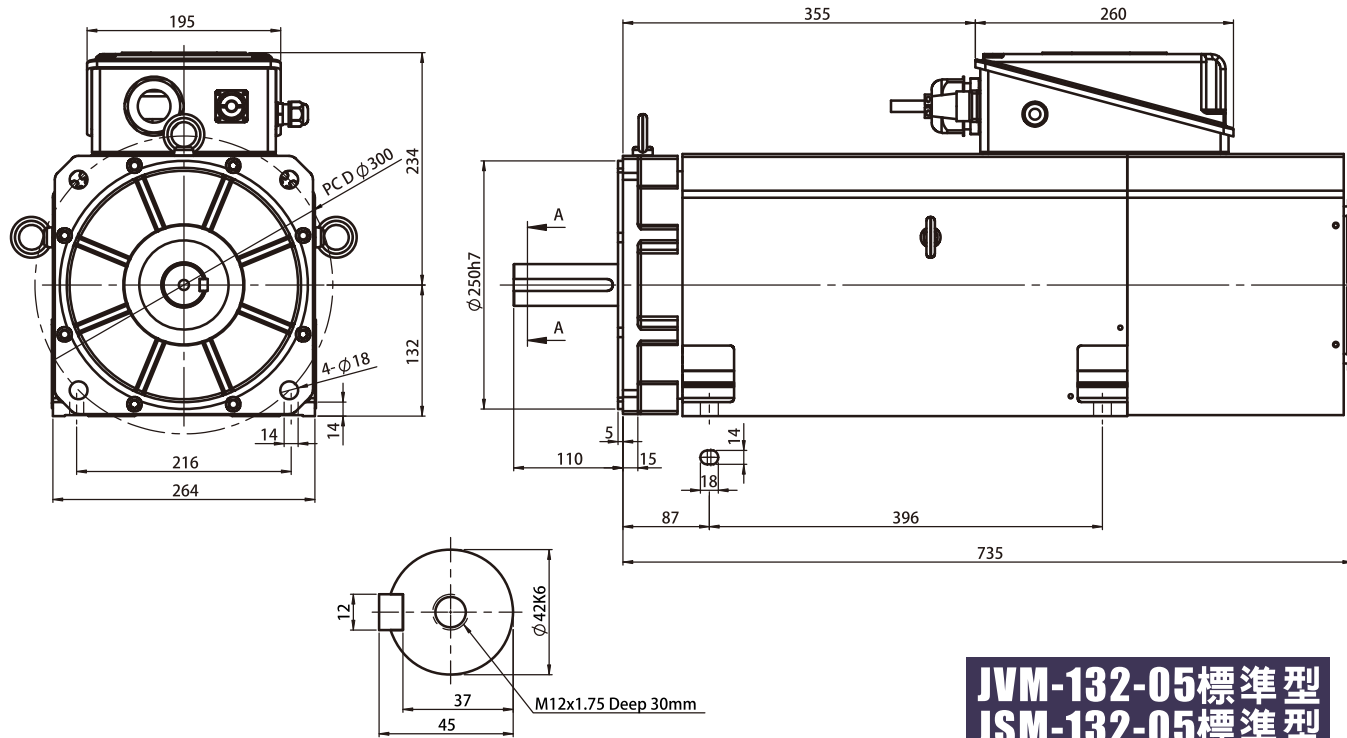
**JVM-132-04長嘴型
 JSM-132-04長嘴型**



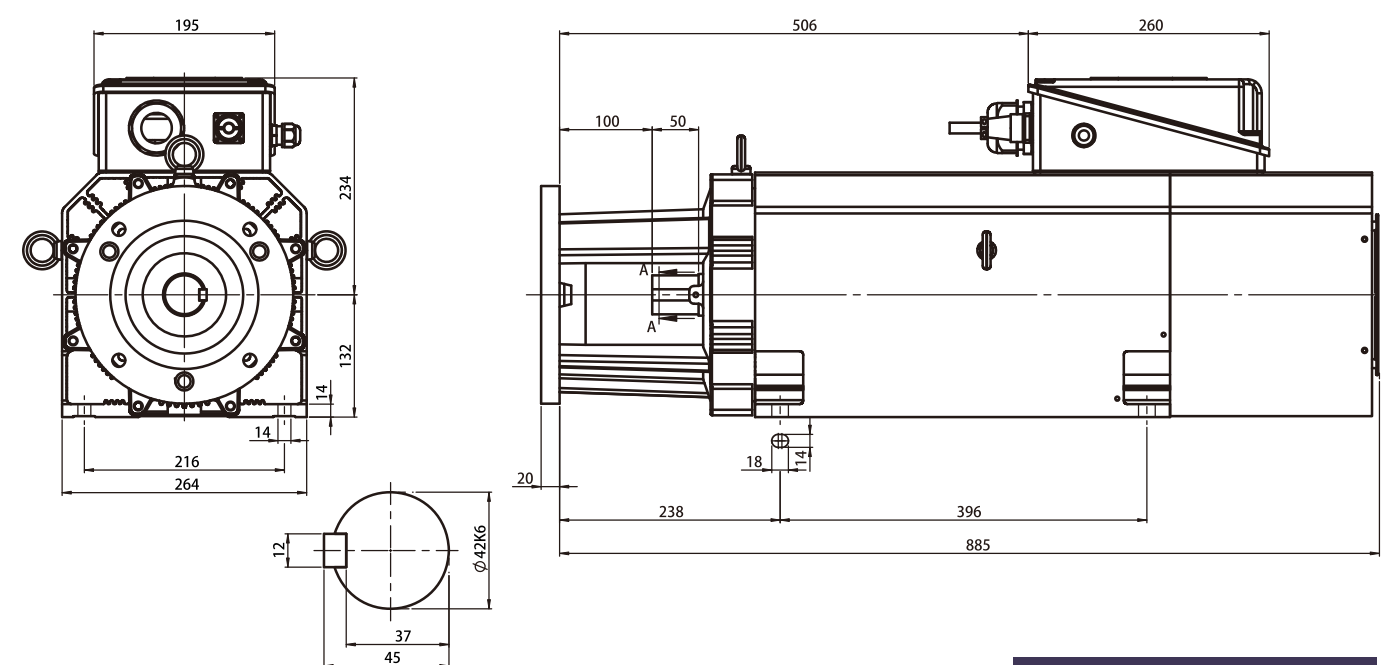
Standard

Motor Type	Rated Power (kw)	Rated Speed (rpm)	Rated Torque (Nm)	Rated Voltage (V)	Rated Current (A)
JVM-132-05-10 JSM-132-05-10	22.0	1000	210.1	220 / 380	74.8/43.2
JVM-132-05-15 JSM-132-05-15	30.0	1500	191.0		103.9/60
JVM-132-05-20 JSM-132-05-20	37.0	2000	176.7		126.1/72.8

Rated Frequency (Hz)	Poles (P)	Efficiency (%)	Max Speed (rpm)	Inertia (kg-cm ²)	Bearings	Weight (kg)
35.0	4	89.1	4500	934	LS:6309 OS:6308	
51.7		88.9				
68.3		88.3				



**JVM-132-05標準型
JSM-132-05標準型**

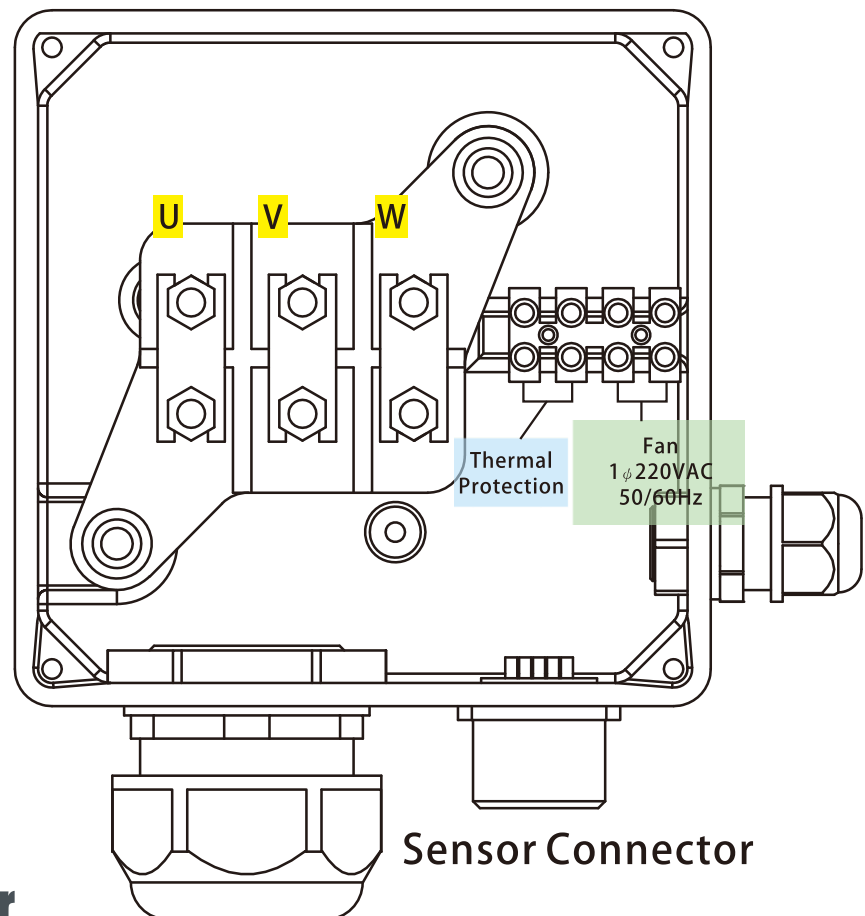


**JVM-132-05長嘴型
JSM-132-05長嘴型**

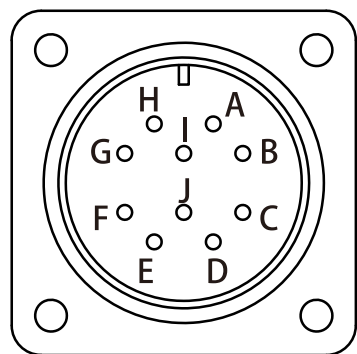
由於本產品持續開發中，因此本公司保留隨時修改產品的設計、特性或是規格變更的權利，恕不另行通知。

Due to we continue to develop the products, we reserve the right to modify or improve the designs, features or specifications of our product at any time without notice.

Terminal Box



Sensor Connector



Power Cable Gland

Connector	Pin A	Pin B	Pin C	Pin D	Pin E	Pin F	Pin G	Pin H	Pin I	Pin J
Encoder Line Driver +5V	A	-A	B	-B	Z	Z	+5V	COM	Shield	
Encoder Pushpull +24V	A		B		Z		+24V	COM1	Shield	





精緻雕琢 極致呈獻



佳晟電機股份有限公司

JIA CHENG ELECTRIC CO., LTD

42085 台中市豐原區萬年路 51 號
No.51, WAN NIAN RD., FENG YUAN DIST,
TAICHUNG CITY, TAIWAN.

TEL:886-4-25233359

FAX:886-4-25278584

Http://www.jcmotor.com.tw

經銷商 Distributed:

