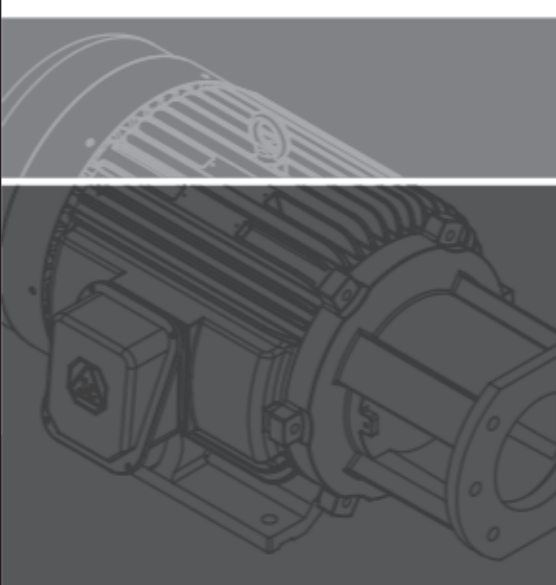
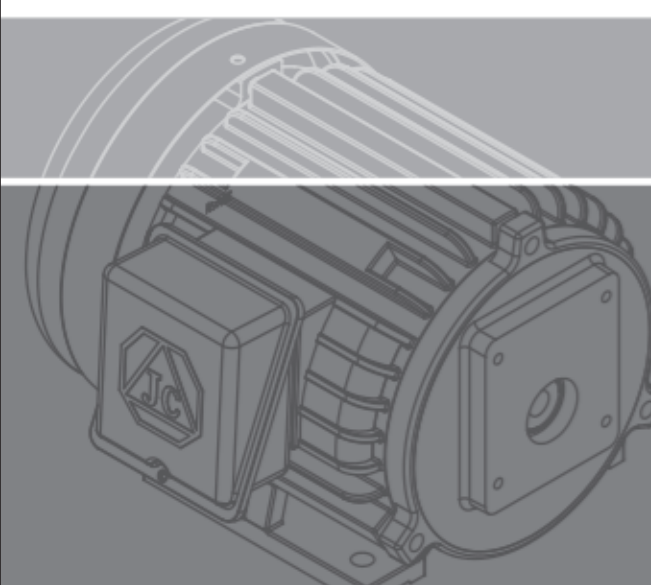
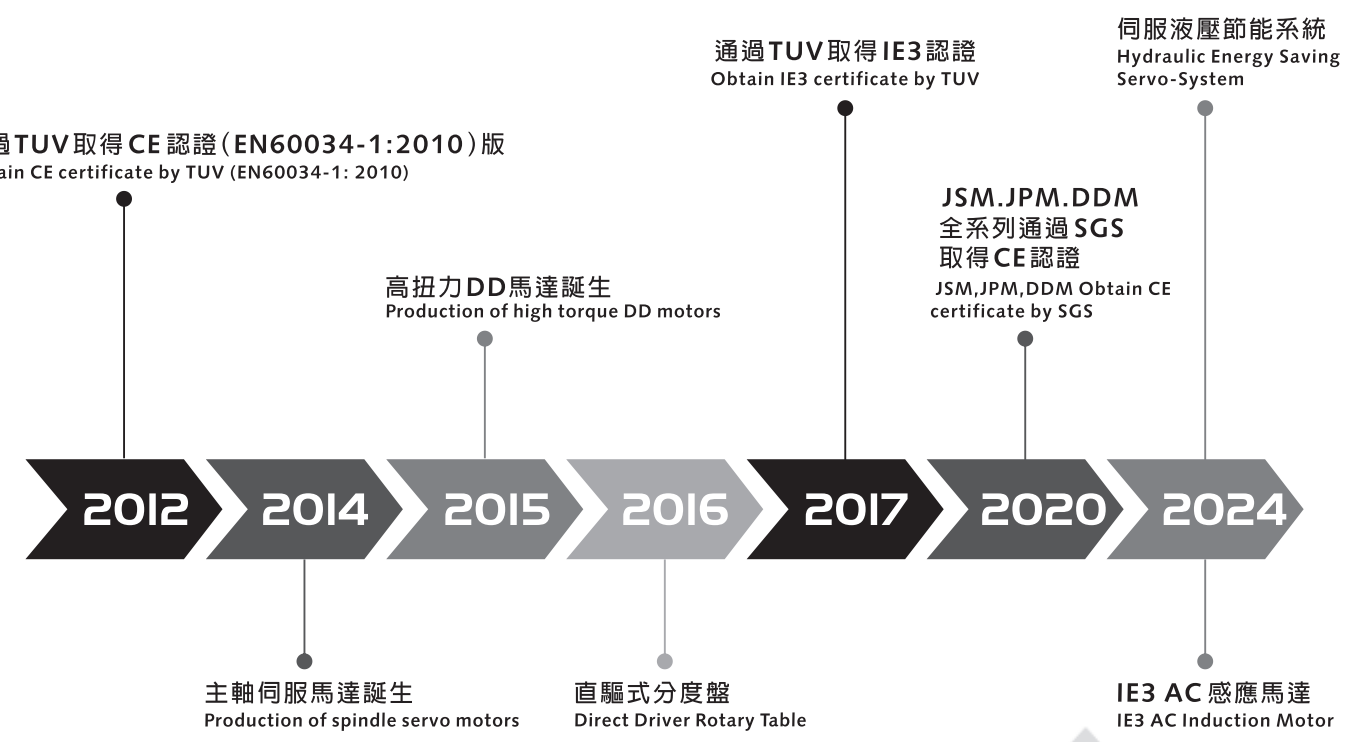
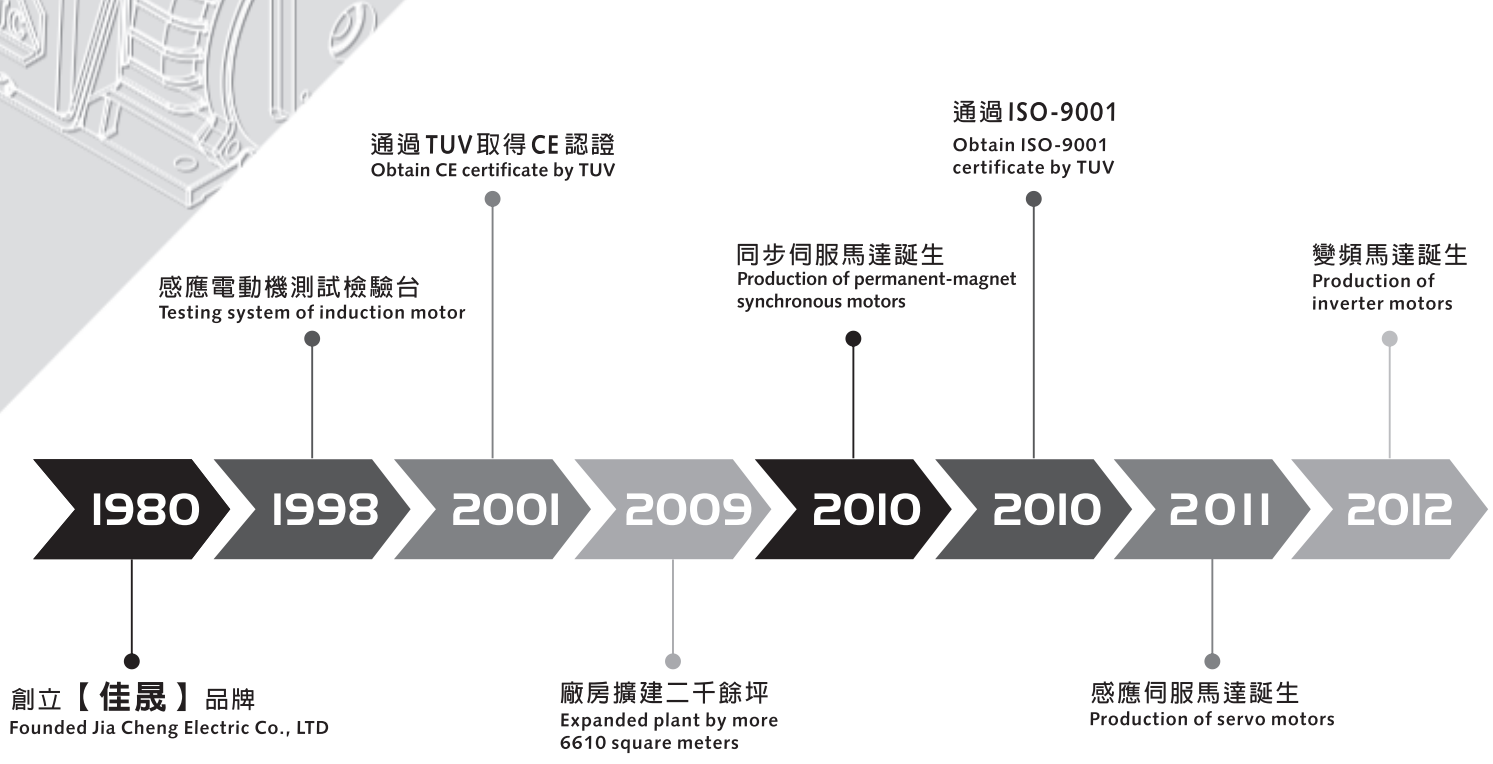




JC Power

JCP Hydraulic Energy Saving Servo-systems

www.jcmotor.com.tw



Jc

佳晟始終秉持著顧客至上的理念，並遵循四大基本原則：**「品質、服務、效率與創新」**，致力於為客戶提供多元化的產品與服務。為滿足廣大客戶的需求，佳晟於2009年1月將廠房擴建至超過二千坪，並以ISO 9001品質管理系統作為核心管理工具，有效整合管理、財務、營運、研發、製造與品管各部門，使各部門能夠相互協調配合，打造出頂尖的服務團隊。

憑藉多年在油壓馬達設計與製造方面的經驗，佳晟一直持續專注於在高效率與節能的研發，並提供全系列完整的油壓馬達產品。藉由紮實的技術團隊，自2010年起，陸續開發出JPM同步伺服馬達、JVM感應伺服馬達、JSM主軸伺服馬達、DDM高扭力DD馬達以及IE3感應馬達，佳晟正式邁向綠能產業的新里程，迎向另一個新紀元。

Jia Cheng has always upheld the principle of putting customers first and adheres to four basic principles—"QUALITY, SERVICE, EFFICIENCY, and INNOVATION"—to provide a diverse range of products and services for its customers. With years of experience in the design and manufacturing of hydraulic motors, Jia Cheng has continuously focused on R&D for high efficiency and energy conservation, offering a complete series of hydraulic motor products. Backed by a solid technical team, the company has earned an excellent reputation in the industry, further proving its strength and the trust of its customers.

Leveraging years of experience in the design and manufacturing of hydraulic motors, Jia Cheng has consistently focused on R&D for high efficiency and energy conservation while offering a complete range of hydraulic motor products. Supported by a solid technical team, since 2010 Jia Cheng has successively developed the JPM synchronous servo motor, JVM induction servo motor, JSM spindle servo motor, DDM high-torque DD motor, and IE3 induction motor, officially embarking on a new journey in the green energy industry and ushering in a new era.



公司簡介 Introduction

經營理念 Management Philosophy

目錄 Contents

七大產品

系統特點 System Features

JCP Hydraulic Energy Saving Servo-systems • 01

0.75 kw Hydraulic Flow Rate: 14 L/min
Hydraulic Operating Pressure: 3.5~4.5 MPa

JCP Hydraulic Energy Saving Servo-systems • 02

0.75 kw Hydraulic Flow Rate: 21 L/min
Hydraulic Operating Pressure: 2.0~3.0 MPa

JCP Hydraulic Energy Saving Servo-systems • 03

1.5 kw Hydraulic Flow Rate: 14 L/min
Hydraulic Operating Pressure: 5.5~7.0 MPa

JCP Hydraulic Energy Saving Servo-systems • 04

1.5 kw Hydraulic Flow Rate: 21 L/min
Hydraulic Operating Pressure: 4.0~6.0 MPa

JCP Hydraulic Energy Saving Servo-systems • 05

1.5 kw Hydraulic Flow Rate: 28 L/min
Hydraulic Operating Pressure: 3.5~4.5 MPa

JCP Hydraulic Energy Saving Servo-systems • 06

2.2 kw Hydraulic Flow Rate: 21 L/min
Hydraulic Operating Pressure: 5.5~7.0 MPa

JCP Hydraulic Energy Saving Servo-systems • 07

2.2 kw Hydraulic Flow Rate: 28 L/min
Hydraulic Operating Pressure: 5.0~6.5 MPa



產品優勢

Product advantages

Energy saving

Energy saving: By using variable frequency drive control, energy savings can exceed 70%, with some models achieving over 90%.

節能

利用變頻驅動控制，省電可達 70% 以上，部分機種甚至可達 90% 以上。

Integrated design

The PM servo motor and controller are combined into a single unit, significantly reducing production costs and eliminating complex wiring during installation.

一體式設計

將 PM 伺服馬達與控制器一體化，大大降低生產成本，並省去安裝時繁瑣的配線。

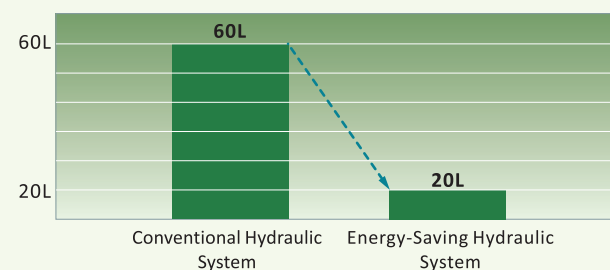


The oil tank capacity has been reduced

From the original 60L to 20L.

油箱容量變小

由原本的 60L 降至 20L。



Low Oil Temperature

Approximately room temperature +1.5°C, effectively reducing hydraulic oil temperature rise, improving machining accuracy, extending the lifespan of hydraulic oil and seals, and lowering air conditioning costs in the factory.

低油溫

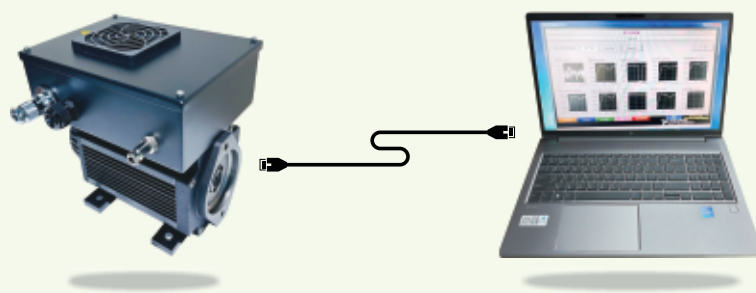
約為室溫增加+1.5°C，可有效降低液壓油溫度上升，提高加工精度，延長液壓油和密封件的使用壽命，並降低工廠內的空調成本。

Industrial IoT

By connecting to the RS-485 communication port, it can output operating status such as power, speed, and current, as well as alarms and maintenance information.

機聯網

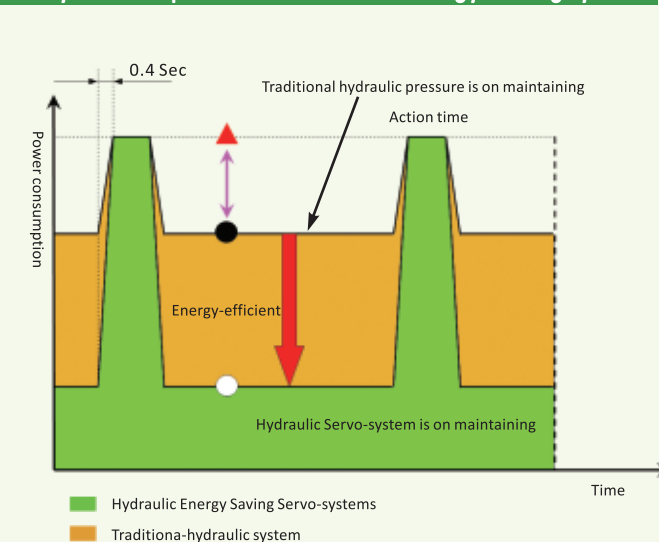
透過連接 RS-485 通訊端口，可輸出功率、轉速、電流等運作狀態，以及警報和維護資訊。



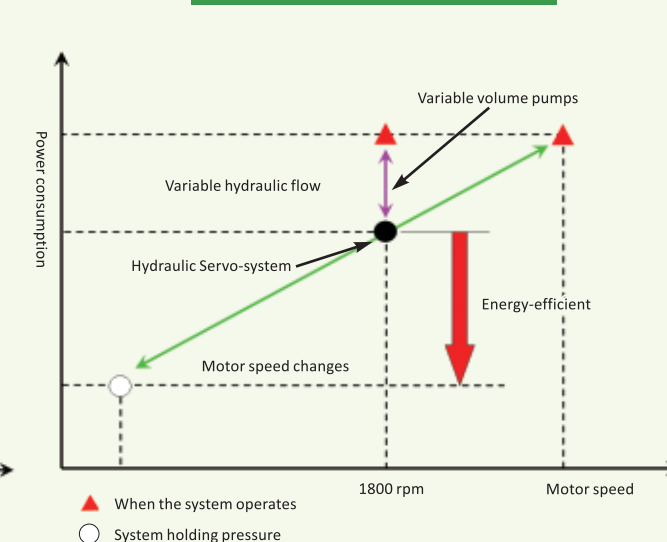
作動原理

Operating Principle

The hydraulic operation mode with energy-saving system



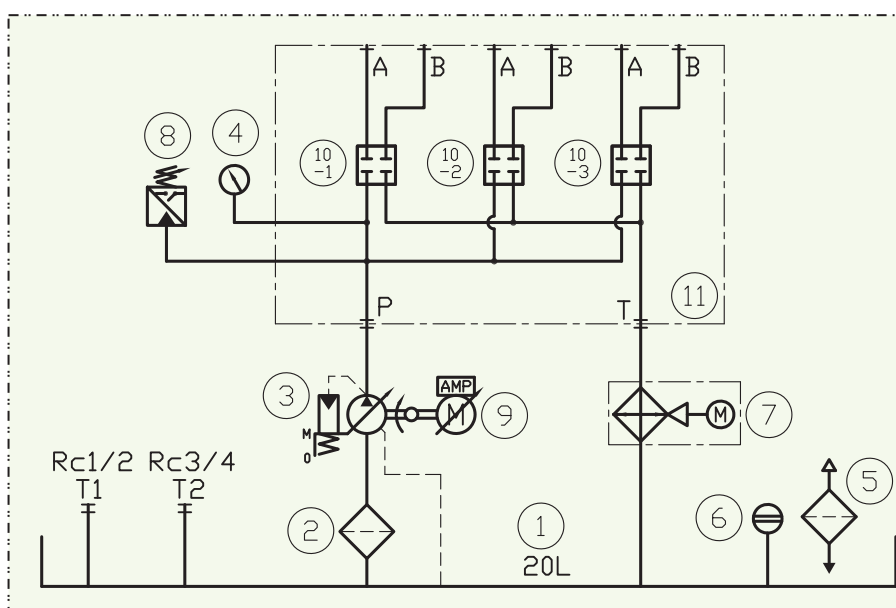
Action structure



- ◆ In the pressure-holding state, the system can maintain the required pressure at a lower speed, significantly reducing energy consumption and achieving over 70% energy savings.
- ◆ Utilizing a high-performance permanent magnet servo motor with low inertia, compact size, and high-speed response capability, the system transitions from pressure-holding to operation in just 0.4 seconds.
- ◆ The specially designed energy-saving pump, combined with a high-performance permanent magnet servo motor, offers better response characteristics compared to conventional variable pumps.
- ◆ Since the system operates at a low speed during pressure-holding, the oil temperature does not easily overheat, significantly reducing hydraulic oil aging and component wear.
- ◆ 在保壓狀態下，系統能以更低的速度維持所需的壓力，從而顯著降低能耗，達到 70% 以上的節電效果。
- ◆ 採用高效能永磁伺服電機優勢，具有低慣量、體積小及高速響應能力，讓系統在保壓時至作動時的時間只需 0.4 秒。
- ◆ 專門設計的節能泵，搭配高性能永磁伺服電機，比一般變量泵具有更好的響應特性。
- ◆ 由於系統在保壓時以低轉速運轉所以油溫不易過熱，因此對液壓油的老化及零件的磨損可明顯改善。

液壓迴路圖

Hydraulic circuit diagram



- ① 20L TANK (20L 油箱)
- ② FILTER (過濾器)
- ③ PUMP (泵浦)
- ④ PRESSURE GAUGE (壓力錶)
- ⑤ FILLER、BREATHER (注油口、呼吸器)
- ⑥ LEVEL GAUGE (液位計)
- ⑦ COOLER (冷卻器)
- ⑧ PRESSURE SWITCH (壓力開關)
- ⑨ MOTOR (馬達)
- ⑩ PLATE (油路板)
- ⑪ MANIFOLD (油路板組)

額定流量

Hydraulic Flow Rate:

14 L/min

操作壓力

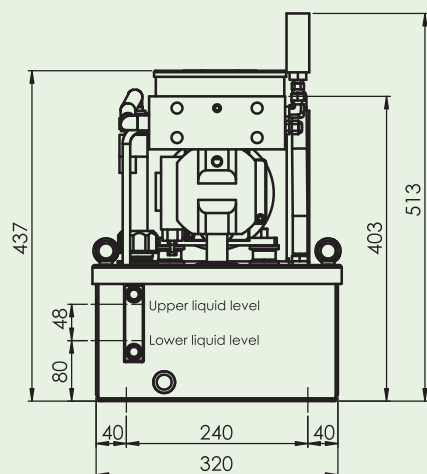
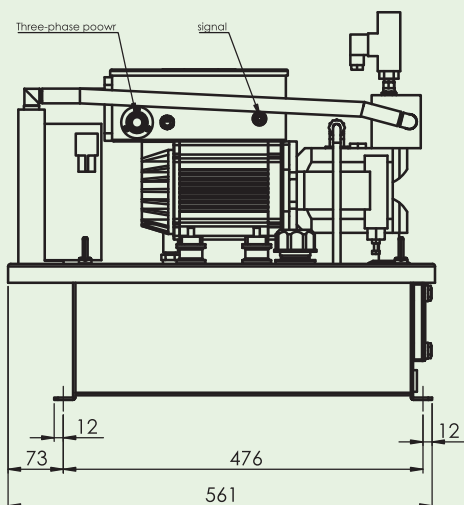
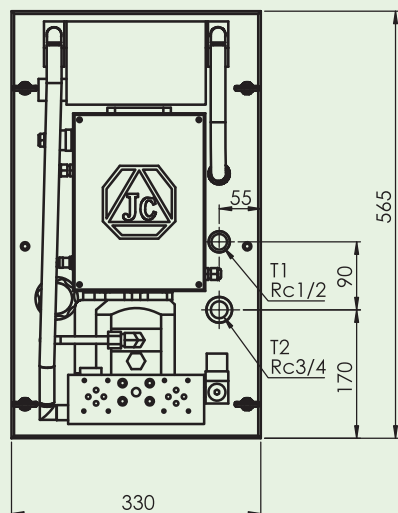
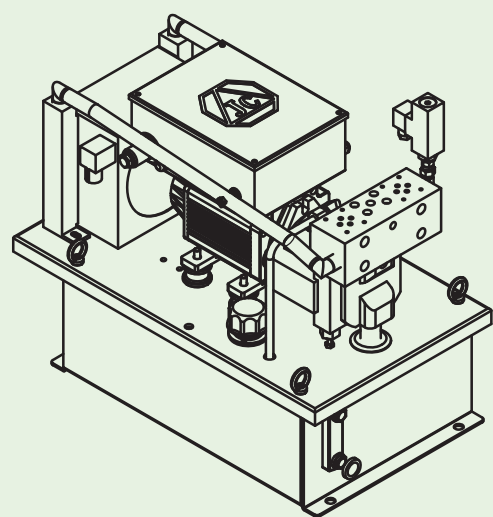
Hydraulic Operating Pressure:

3.5~4.5 MPa

規格 Specification

電 壓 Power Supply Voltage	3Ø AC200~240V、50 / 60 Hz (220V Product) 3Ø AC380~480V、50 / 60 Hz (380V Product)
額定輸入電流 Rated Input Current	4.5A/0.75kw (220V Product) 2.6A/0.75kw (380V Product)
液壓油 Hydraulic Oil	ISO VG32
油 溫 Oil Temperature	10~60°C
環境溫度 Ambient Temperature	10~35°C / 20~85%RH (無結露No Condensation)
環境濕度 Ambient Humidity	避免使用霧狀水溶性切削液 Avoid using mist-type water-soluble cutting fluids.

安裝尺寸 Installation dimensions



額定流量

Hydraulic Flow Rate:

21 L/min

操作壓力

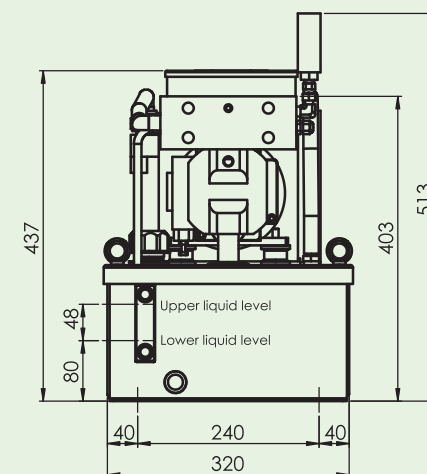
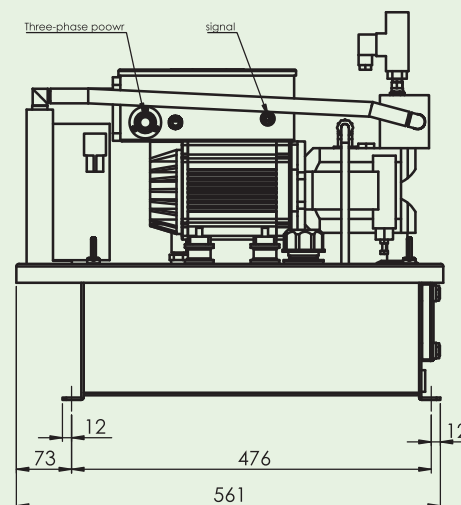
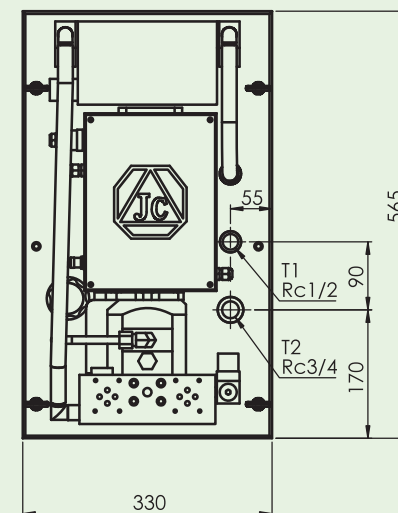
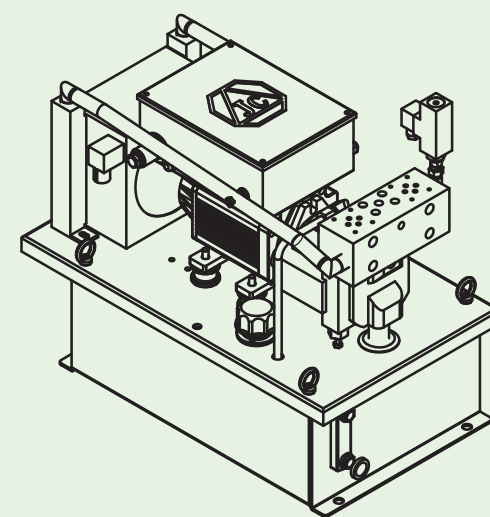
Hydraulic Operating Pressure:

2.0~3.0 MPa

規格 Specification

電 壓 Power Supply Voltage	3Ø AC200~240V、50 / 60 Hz (220V Product) 3Ø AC380~480V、50 / 60 Hz (380V Product)
額定輸入電流 Rated Input Current	4.5A/0.75kw (220V Product) 2.6A/0.75kw (380V Product)
液壓油 Hydraulic Oil	ISO VG32
油 溫 Oil Temperature	10~60°C
環境溫度 Ambient Temperature	10~35°C / 20~85%RH (無結露No Condensation)
環境濕度 Ambient Humidity	避免使用霧狀水溶性切削液 Avoid using mist-type water-soluble cutting fluids.

安裝尺寸 Installation dimensions



額定流量

Hydraulic Flow Rate:

14 L/min

操作壓力

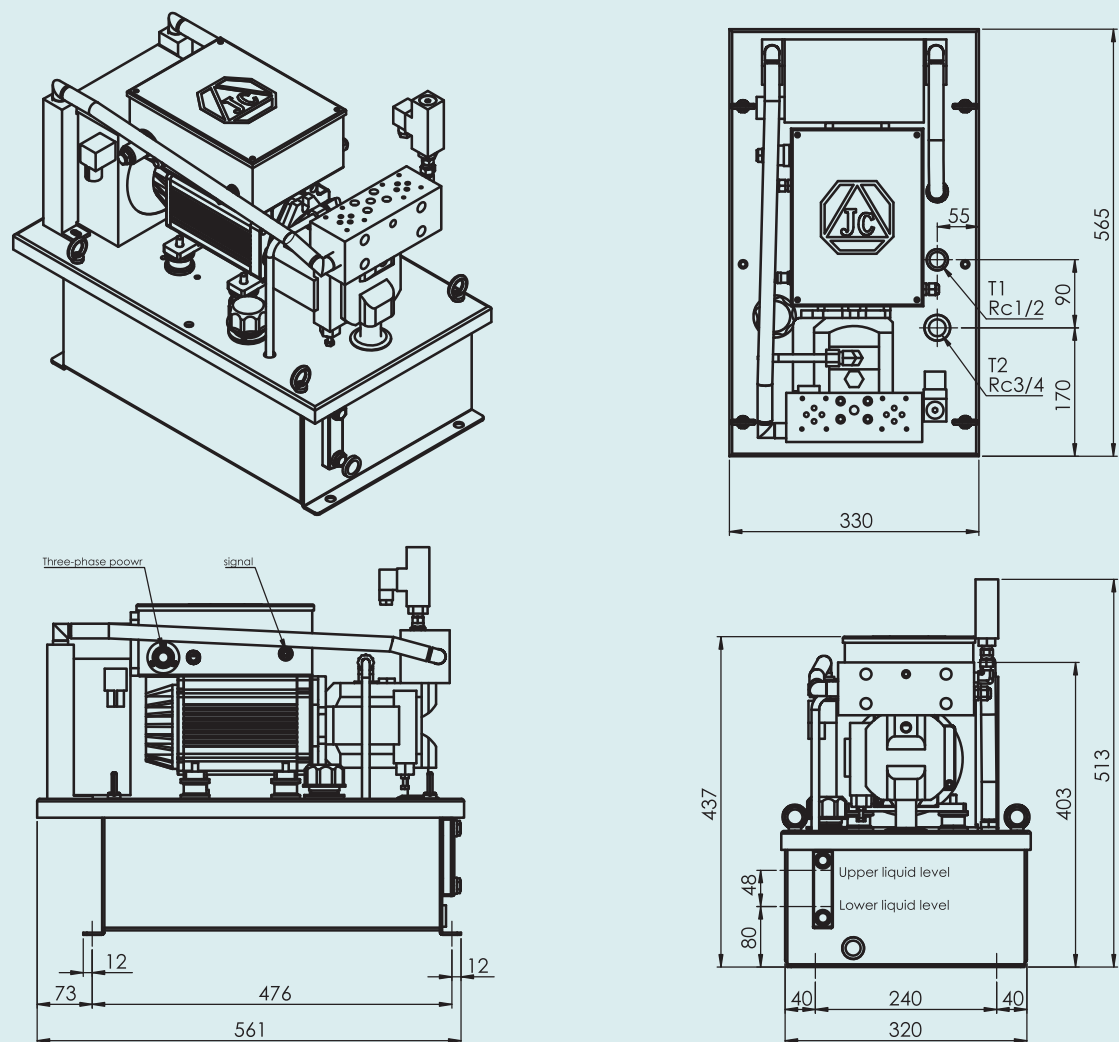
Hydraulic Operating Pressure:

5.5 ~ 7.0 MPa

規格 Specification

電 壓 Power Supply Voltage	3Ø AC200~240V、50 / 60 Hz (220V Product) 3Ø AC380~480V、50 / 60 Hz (380V Product)
額定輸入電流 Rated Input Current	9.5A/1.5 kw (220V Product) 5.8A/1.5 kw (380V Product)
液壓油 Hydraulic Oil	ISO VG32
油 溫 Oil Temperature	10~60°C
環境溫度 Ambient Temperature	10~35°C / 20~85%RH (無結露No Condensation) 避免使用霧狀水溶性切削液
環境濕度 Ambient Humidity	Avoid using mist-type water-soluble cutting fluids.

安裝尺寸 Installation dimensions



額定流量

Hydraulic Flow Rate:

21 L/min

操作壓力

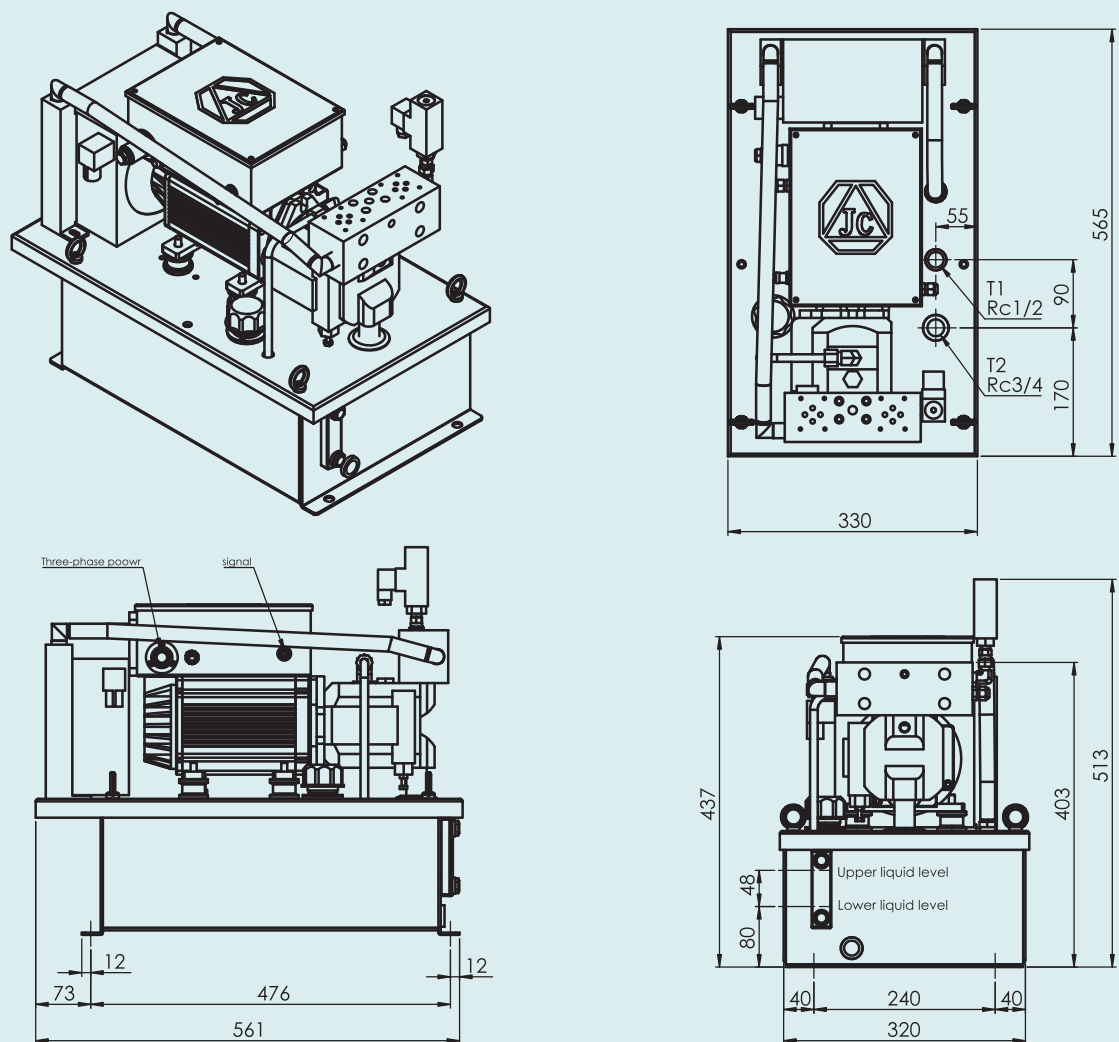
Hydraulic Operating Pressure:

4.0 ~ 6.0 MPa

規格 Specification

電 壓 Power Supply Voltage	3Ø AC200~240V、50 / 60 Hz (220V Product) 3Ø AC380~480V、50 / 60 Hz (380V Product)
額定輸入電流 Rated Input Current	9.5A/1.5 kw (220V Product) 5.8A/1.5 kw (380V Product)
液壓油 Hydraulic Oil	ISO VG32
油 溫 Oil Temperature	10~60°C
環境溫度 Ambient Temperature	10~35°C / 20~85%RH (無結露No Condensation) 避免使用霧狀水溶性切削液
環境濕度 Ambient Humidity	Avoid using mist-type water-soluble cutting fluids.

安裝尺寸 Installation dimensions



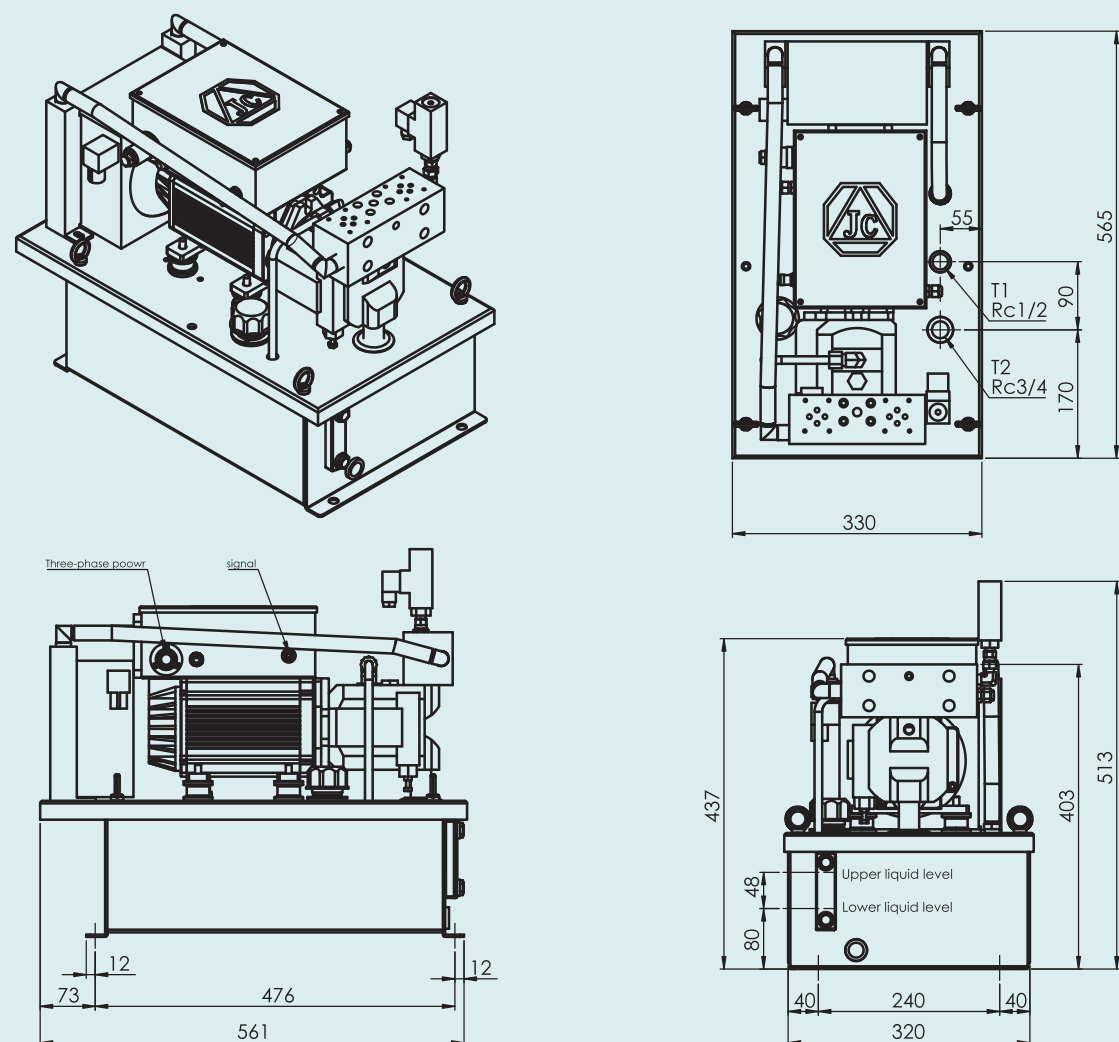
額定流量 Hydraulic Flow Rate: 28 L/min

操作壓力 Hydraulic Operating Pressure: 3.5 ~ 4.5 MPa

規格 Specification

電 壓 Power Supply Voltage	3Ø AC200~240V、50 / 60 Hz (220V Product) 3Ø AC380~480V、50 / 60 Hz (380V Product)
額定輸入電流 Rated Input Current	9.5A/1.5 kw (220V Product) 5.8A/1.5 kw (380V Product)
液壓油 Hydraulic Oil	ISO VG32
油 溫 Oil Temperature	10~60°C
環境溫度 Ambient Temperature	10~35°C / 20~85%RH (無結露No Condensation) 避免使用霧狀水溶性切削液
環境濕度 Ambient Humidity	Avoid using mist-type water-soluble cutting fluids.

安裝尺寸 Installation dimensions



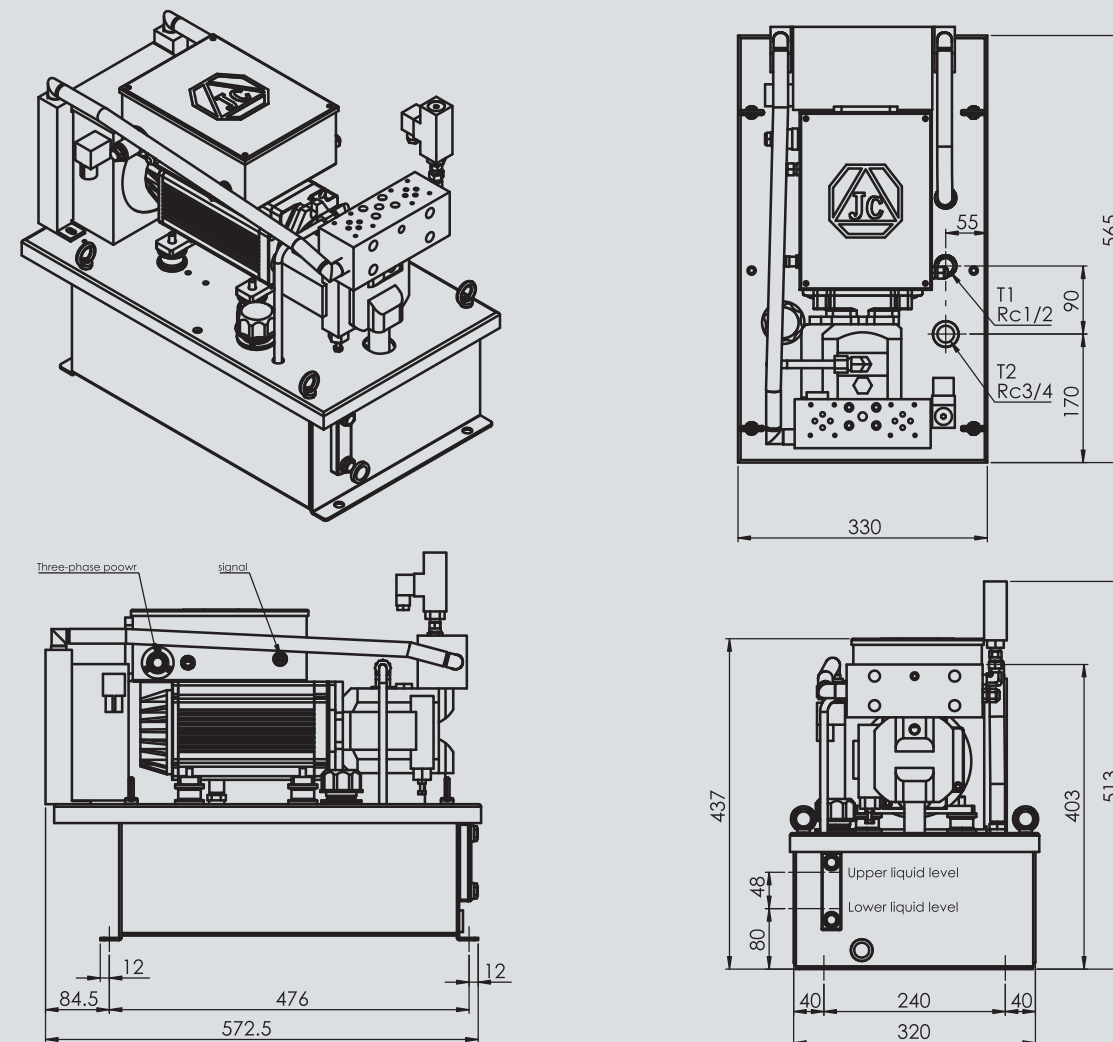
額定流量 Hydraulic Flow Rate: 21 L/min

操作壓力 Hydraulic Operating Pressure: 5.5 ~ 7.0 MPa

規格 Specification

電 壓 Power Supply Voltage	3Ø AC200~240V、50 / 60 Hz (220V Product) 3Ø AC380~480V、50 / 60 Hz (380V Product)
額定輸入電流 Rated Input Current	13.2A/2.2 kw (220V Product) 8.2A/2.2 kw (380V Product)
液壓油 Hydraulic Oil	ISO VG32
油 溫 Oil Temperature	10~60°C
環境溫度 Ambient Temperature	10~35°C / 20~85%RH (無結露No Condensation) 避免使用霧狀水溶性切削液
環境濕度 Ambient Humidity	Avoid using mist-type water-soluble cutting fluids.

安裝尺寸 Installation dimensions



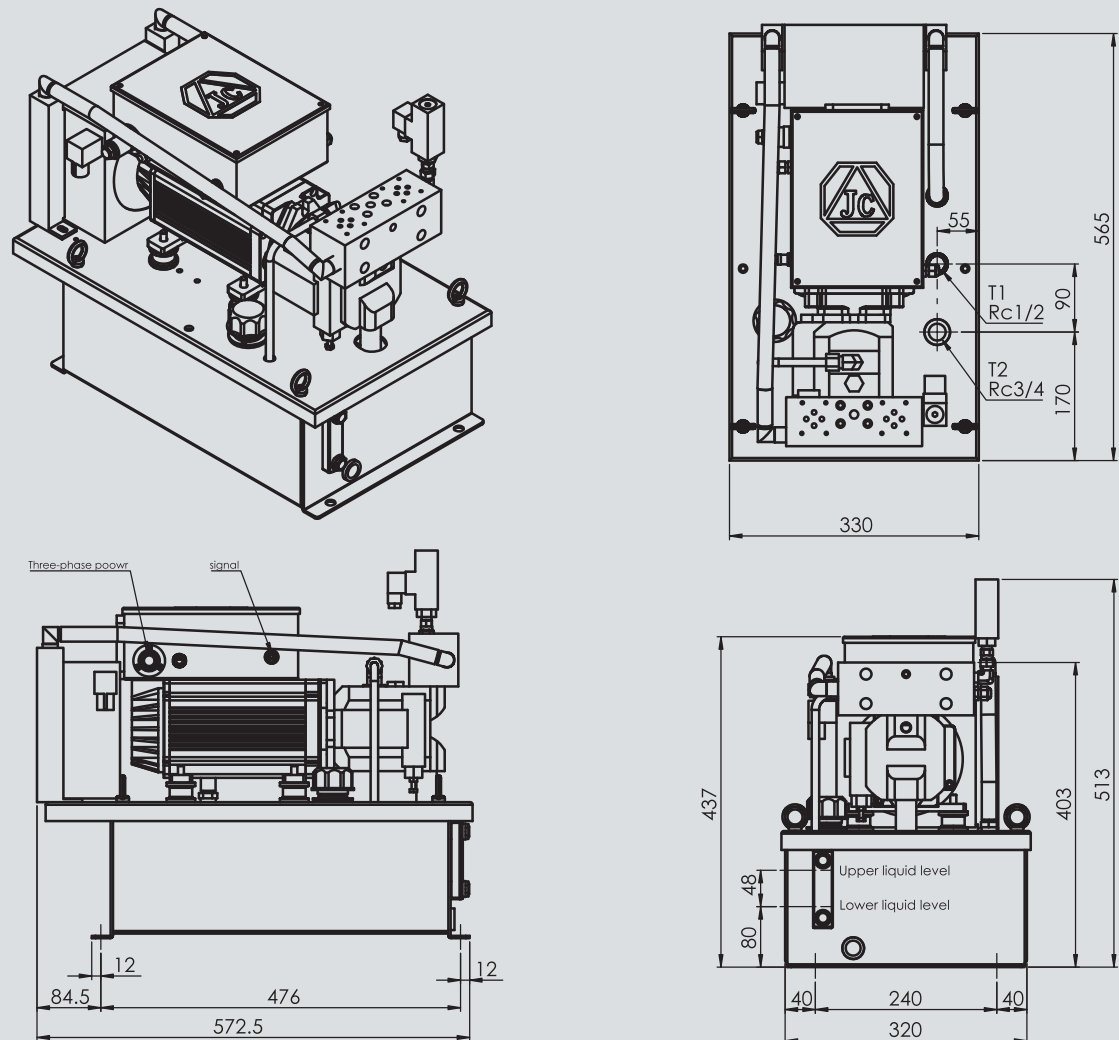
額定流量 Hydraulic Flow Rate: 28 L/min

操作壓力 Hydraulic Operating Pressure: 5.0 ~ 6.5 MPa

規格 Specification

電 壓 Power Supply Voltage	3Ø AC200~240V、50 / 60 Hz (220V Product) 3Ø AC380~480V、50 / 60 Hz (380V Product)
額定輸入電流 Rated Input Current	13.2A/2.2 kw (220V Product) 8.2A/2.2 kw (380V Product)
液壓油 Hydraulic Oil	ISO VG32
油 溫 Oil Temperature	10~60°C
環境溫度 Ambient Temperature	10~35°C / 20~85%RH (無結露 No Condensation) 避免使用霧狀水溶性切削液 Avoid using mist-type water-soluble cutting fluids.
環境濕度 Ambient Humidity	

安裝尺寸 Installation dimensions



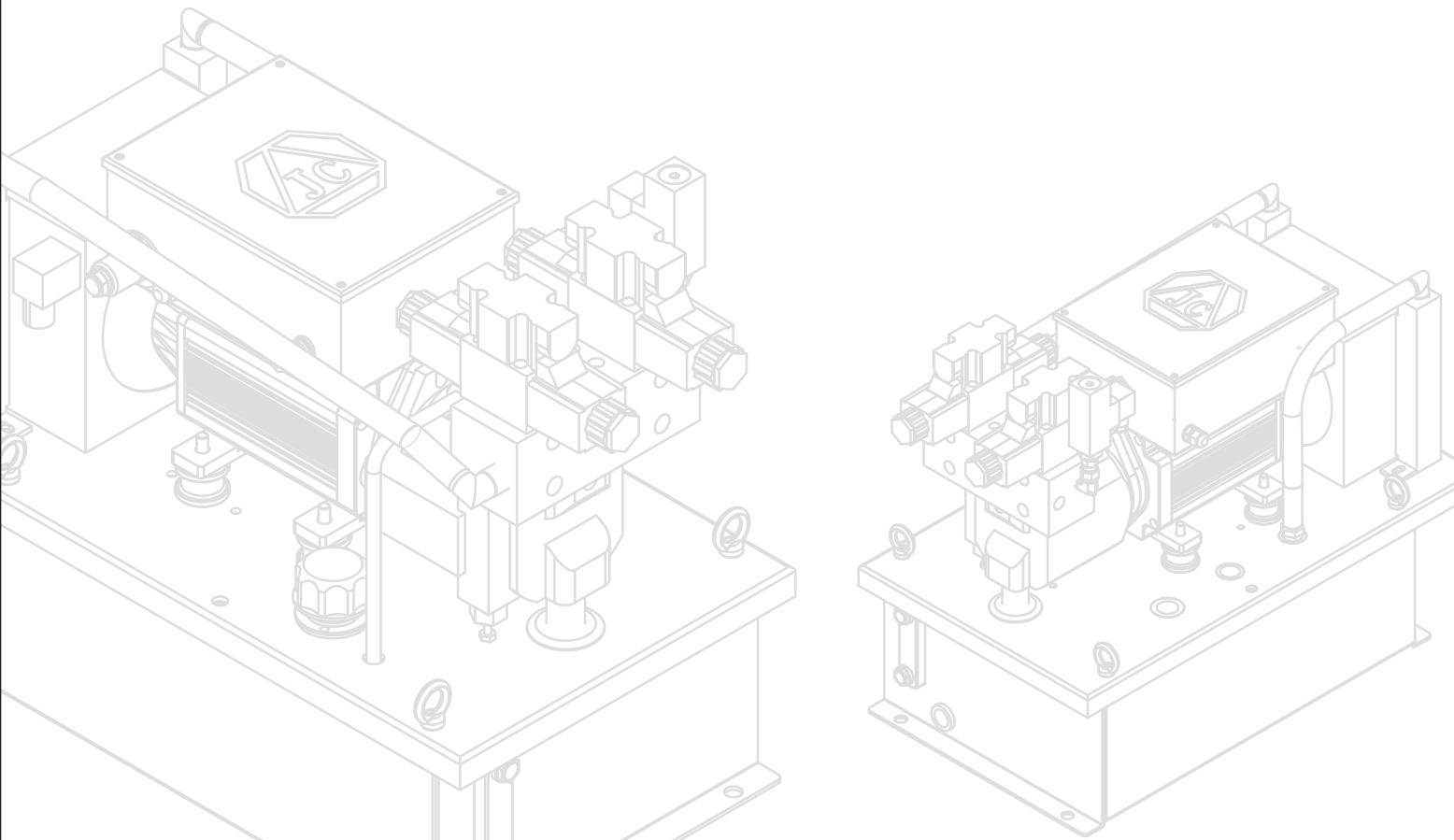
大型伺服液壓節能系統 Large-Scale Hydraulic Energy Saving Servo-System



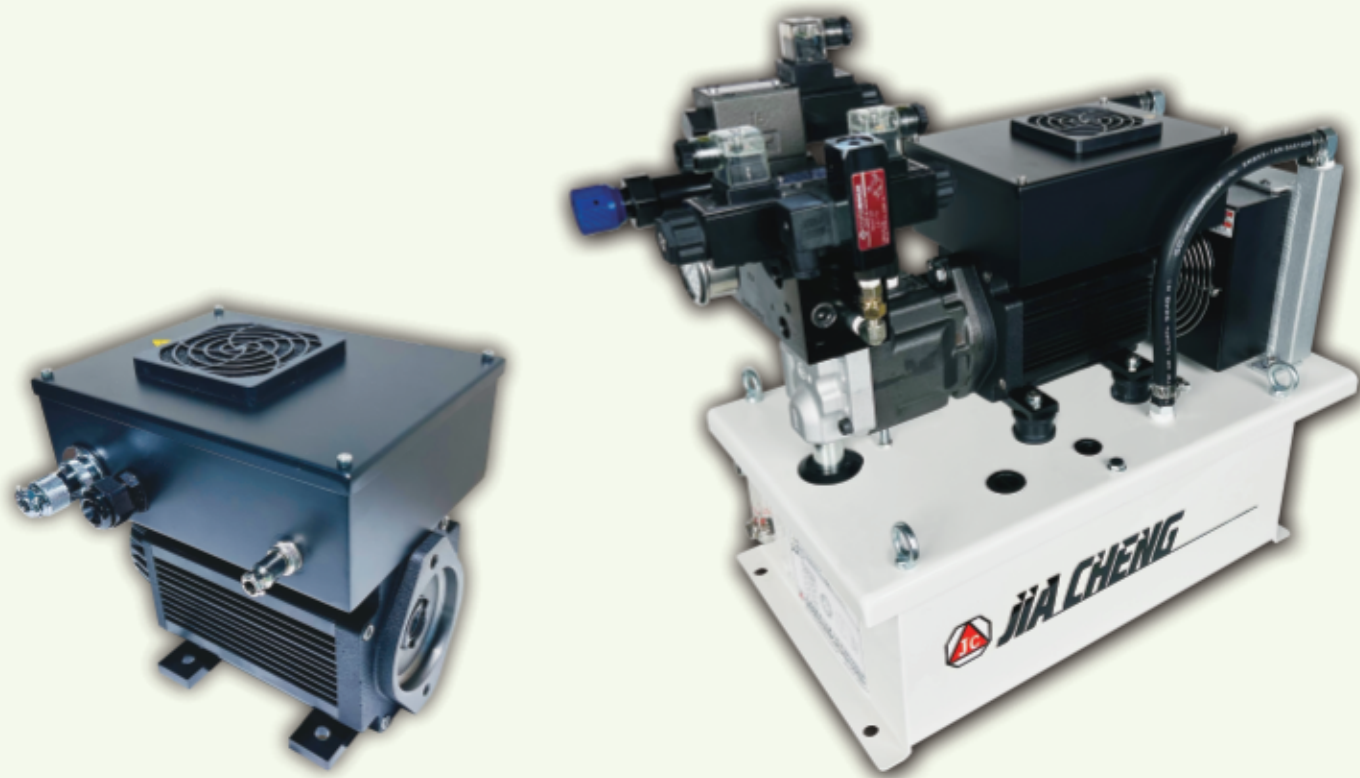
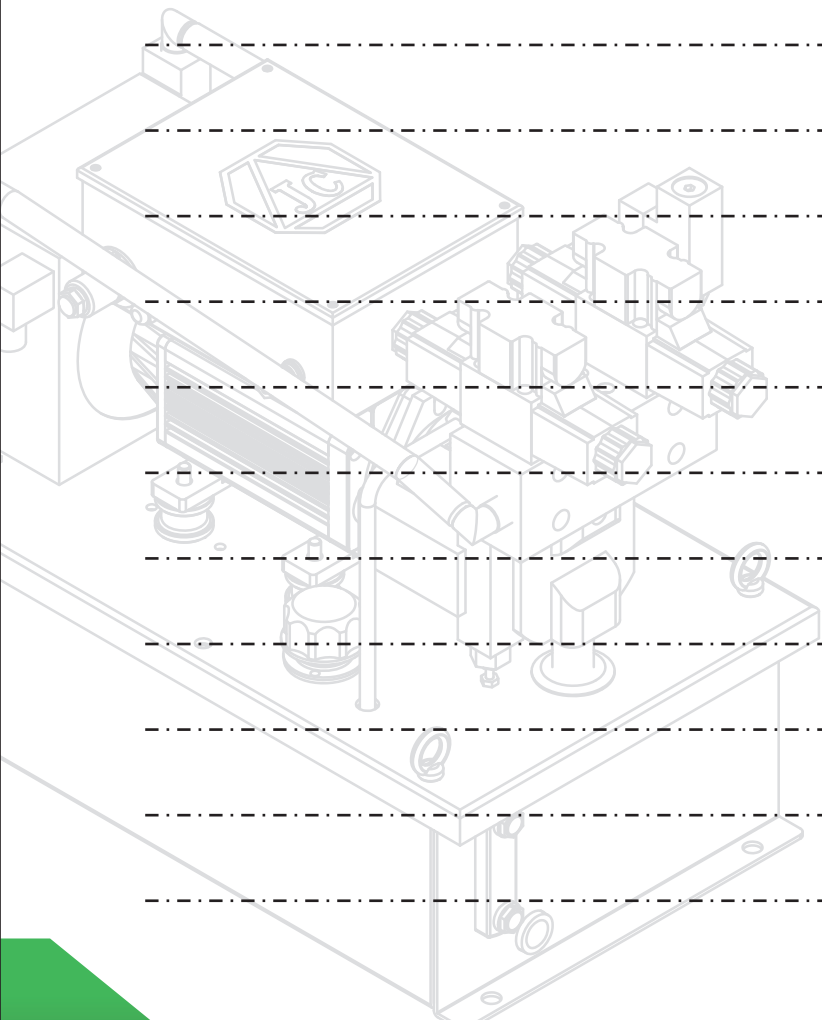
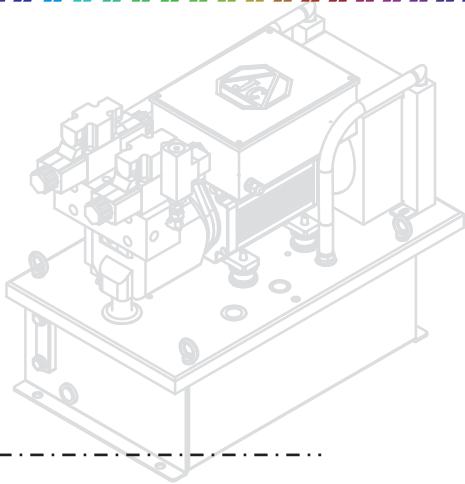
可客製化規格 Customizable Specifications

We will design the rated flow and operating pressure for the hydraulic system to meet your system specifications.

提供液壓系統的額定流量與操作壓力，由我司為您設計，確保符合您的系統規格。

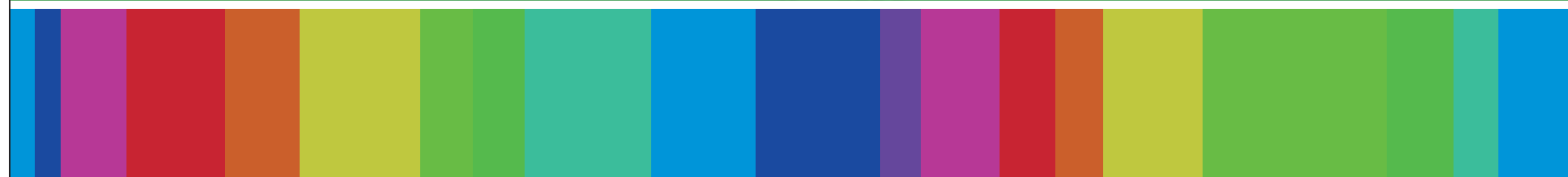


OFFICIAL MEMO





精緻雕琢 極致呈獻
Jewel Motor Creates Your Power.



佳晟電機股份有限公司
JIA CHENG ELECTRIC CO., LTD

42085 台中市豐原區萬年路 51 號
No.51, WAN NIAN RD., FENG YUAN DIST.,
TAICHUNG CITY, TAIWAN.
TEL:886-4-25233359
FAX:886-4-25278584
[Http://www.jcmotor.com.tw](http://www.jcmotor.com.tw)

經銷商 Distributor:

